



EDGE





A BOLD STATEMENT ON THE EDGE OF DOWNTOWN DUBAI

Say hello to a truly cosmopolitan living experience on the EDGE of Downtown Dubai and Business Bay.

The EDGE introduces an eclectic urban vibe to the city that is defined by its modern architecture and signature interior design of bold, contrasting colour palettes.



LOCATION

THE CITY AT YOUR DOORSTEP

Strategically located to offer residents a vibrant choice of lifestyle options, The EDGE puts the best of Dubai at your doorstep.

A connected address for work and play, The EDGE is minutes away from the entertainment district of Downtown Dubai in one direction, the calm waters of the Dubai Canal in the other, whilst just steps away from a wide array of retail and dining options.





RESIDENCES

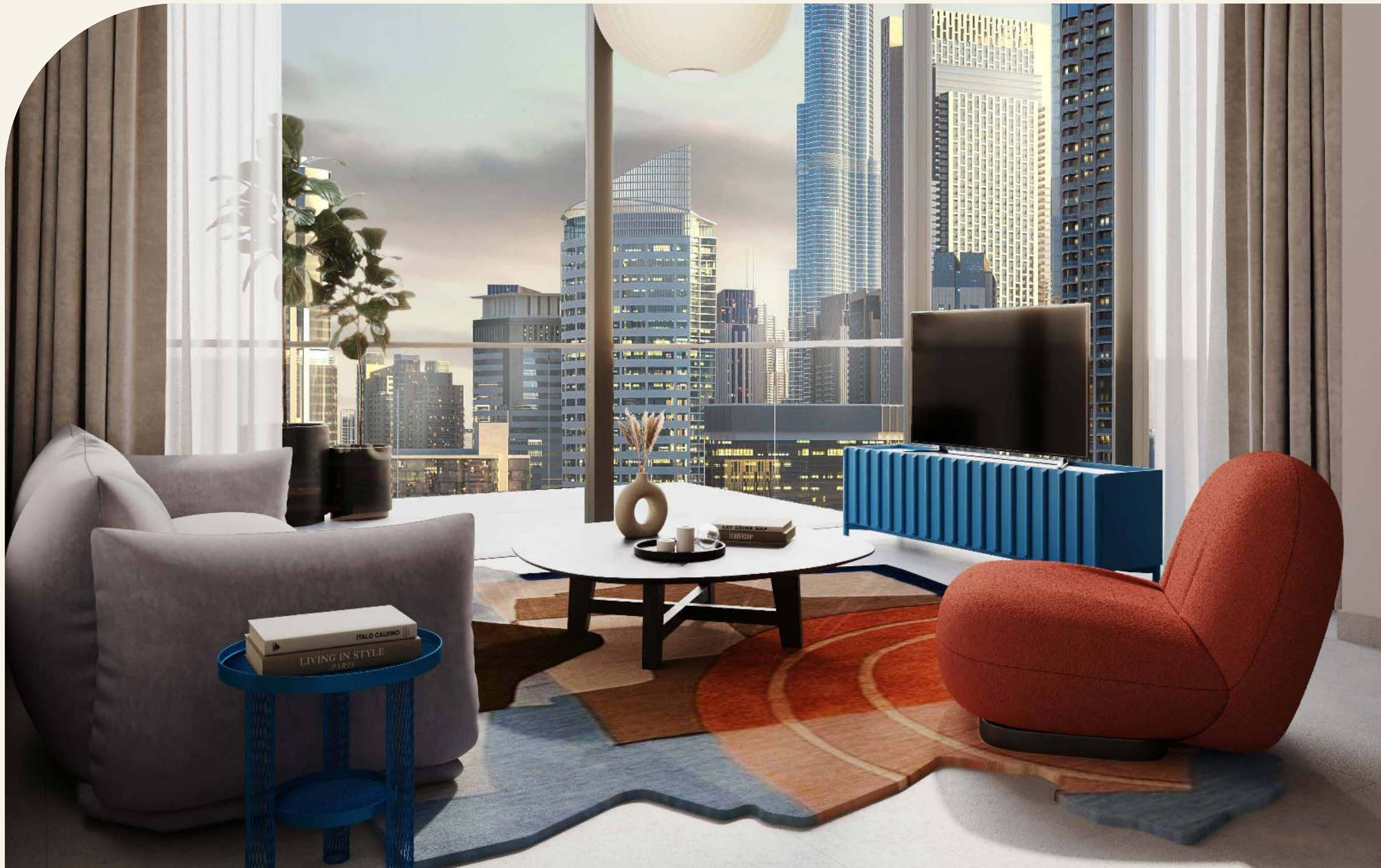
VIBRANT DESIGN

Presenting timeless architecture fused with vibrant design, the dual towers of The EDGE have been strategically placed to ensure residents are mesmerised by the city's beauty, no matter which direction they face.

The EDGE features eclectic-styled one and two-bedroom residences with views of the Burj Khalifa, Dubai Canal and Business Bay.















LIFESTYLE AMENITIES

LIFE AT THE EDGE

Make the most of your downtime and go beyond condominium living at The EDGE's wide range of lifestyle facilities including a co-working space, games room, social lounge and more!

Spanning over 61,000 sq.ft., the leisure deck of the podium level offers a haven of well-being and fun for all, including a large fully equipped gymnasium, infinity pool, outdoor gym, padel courts, pickleball/basketball court, barbecue area and a selection of seating and lounge areas.



1. Lobby Entry
2. Yoga Deck
3. Lounge Area/Outdoor Seating
4. Community Pool
5. Courtyard
6. Pool Deck
7. Sunken Seating
8. BBQ Area
9. Outdoor Fitness Area
10. Sprint Track
11. Padel Court
12. Pickleball/Basketball
13. Jacuzzi



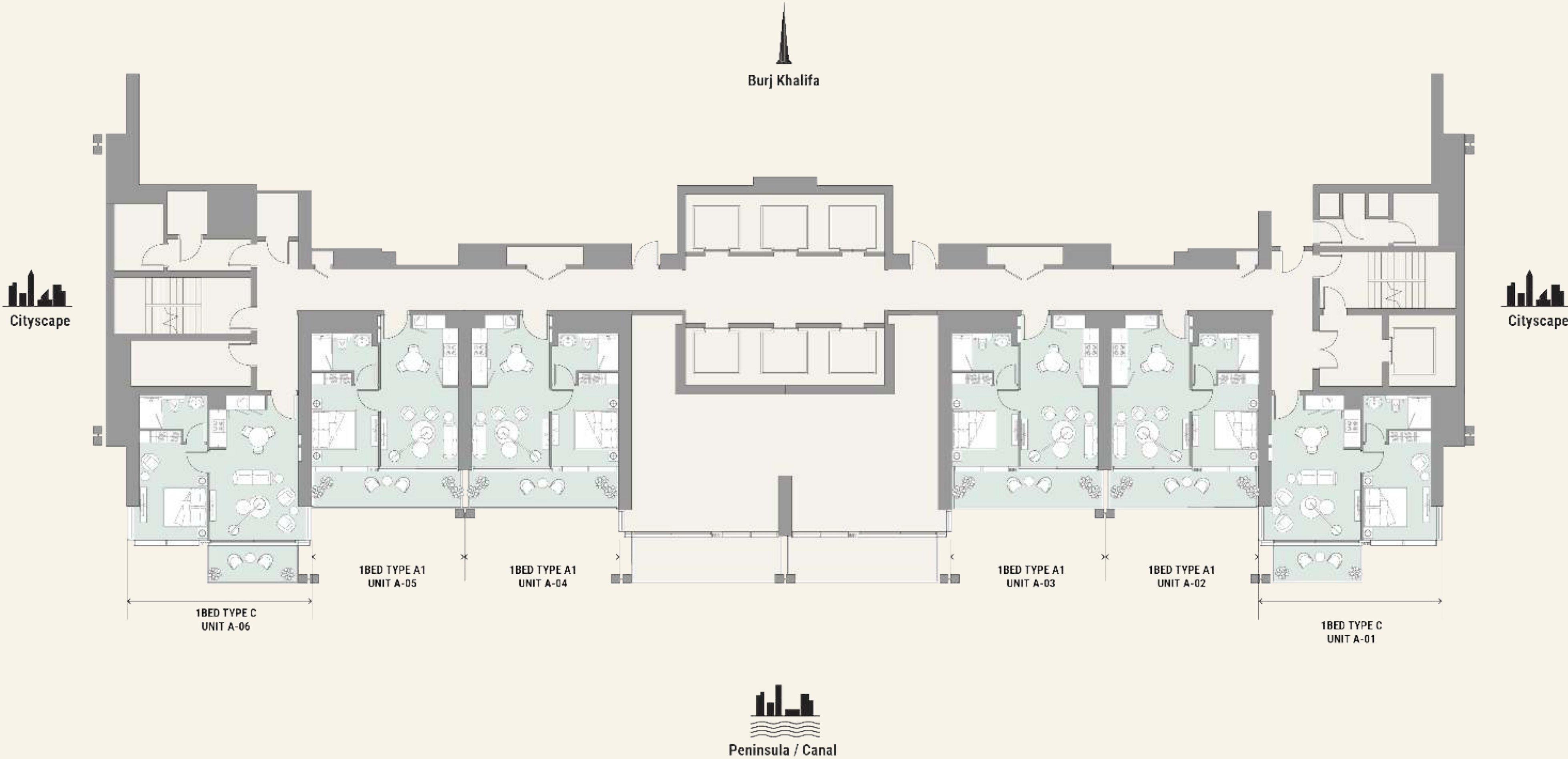


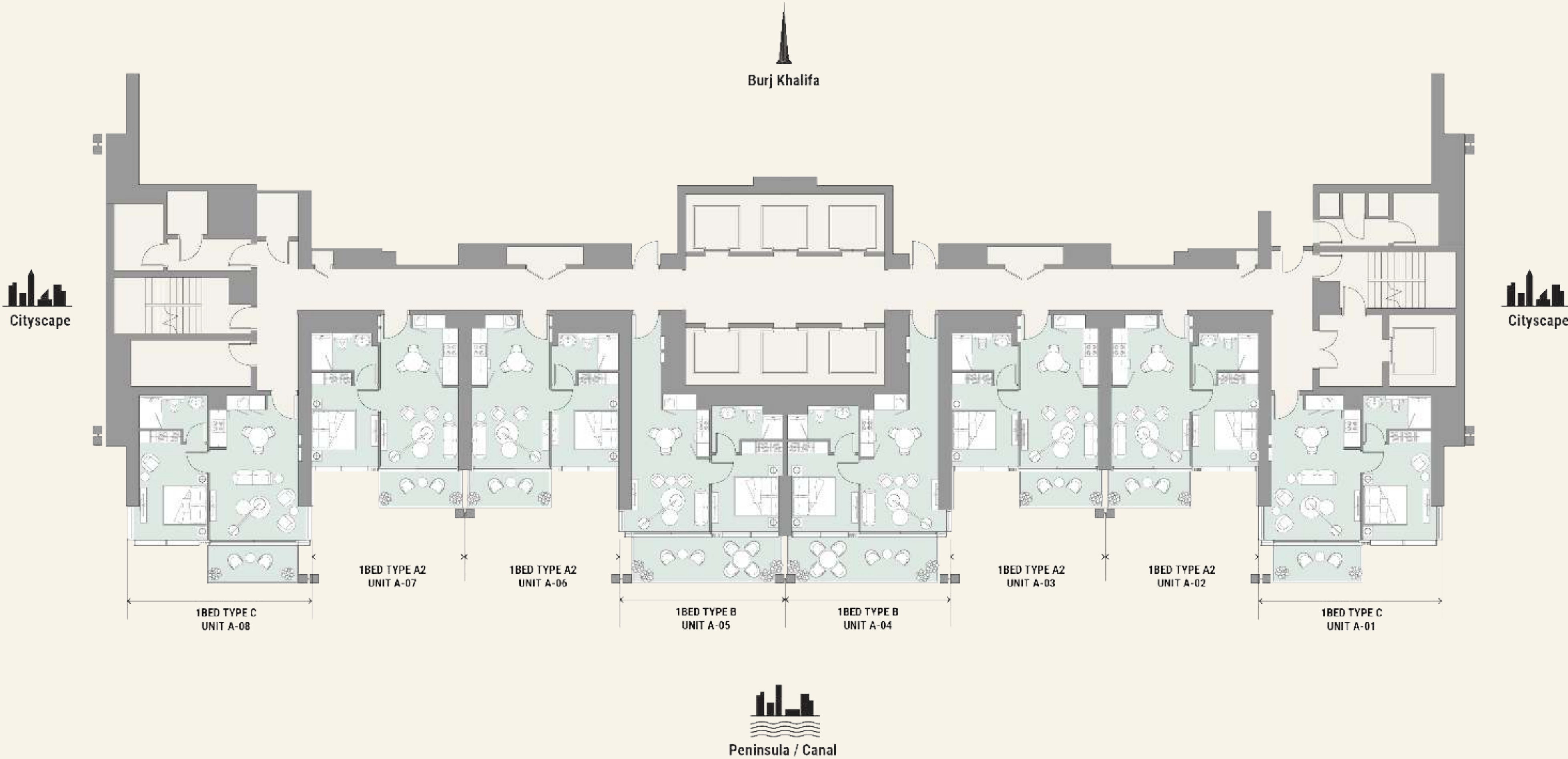






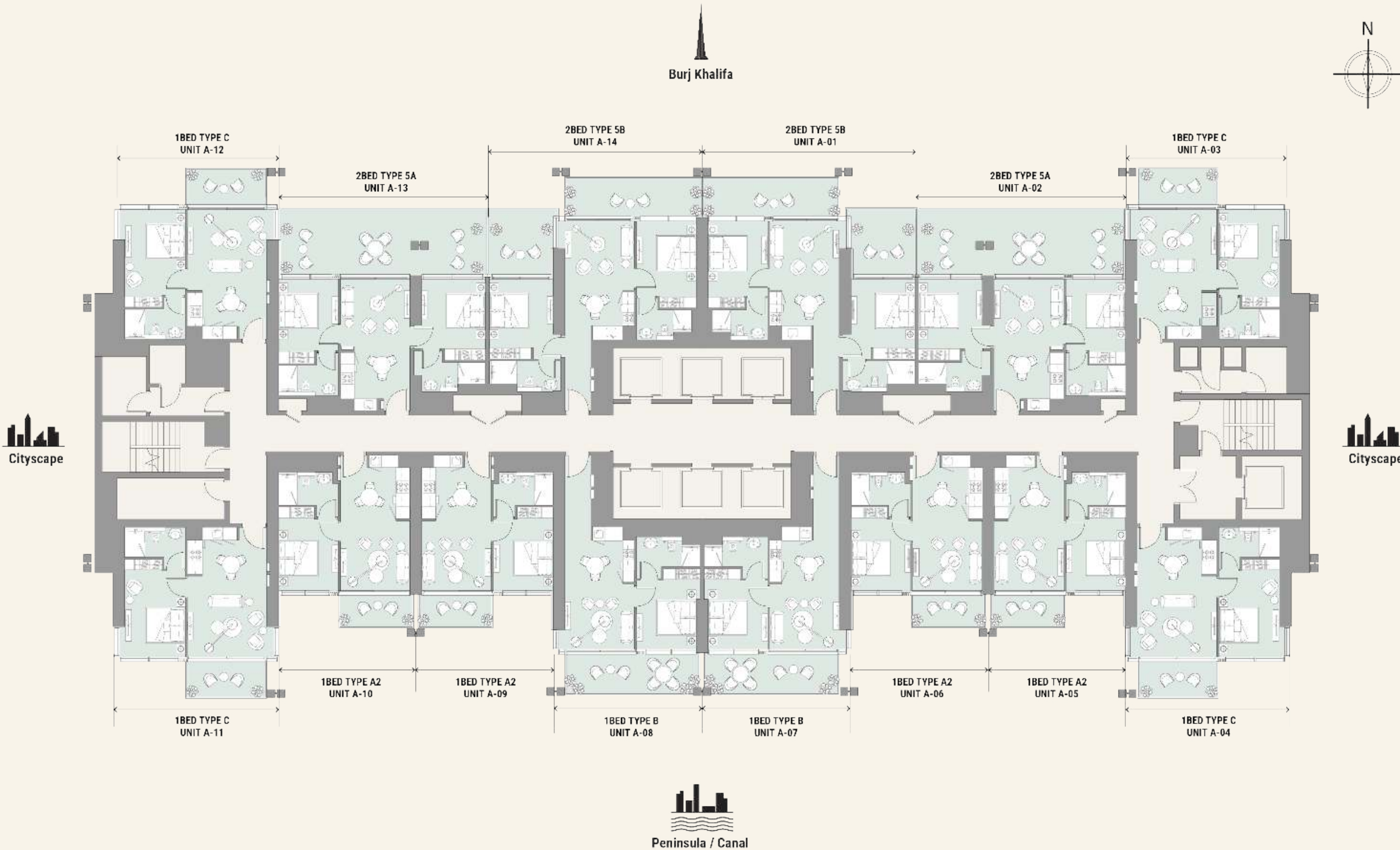


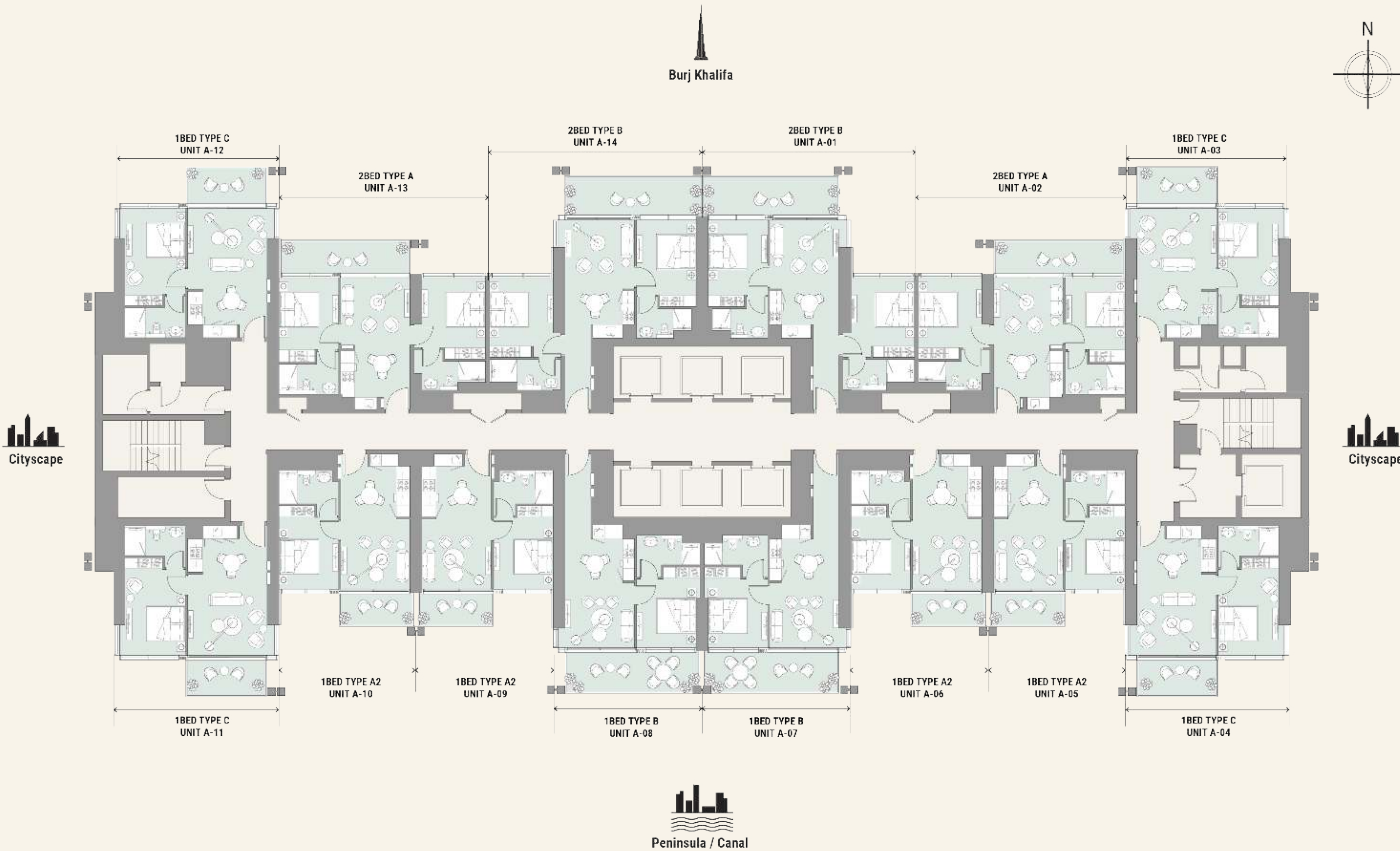


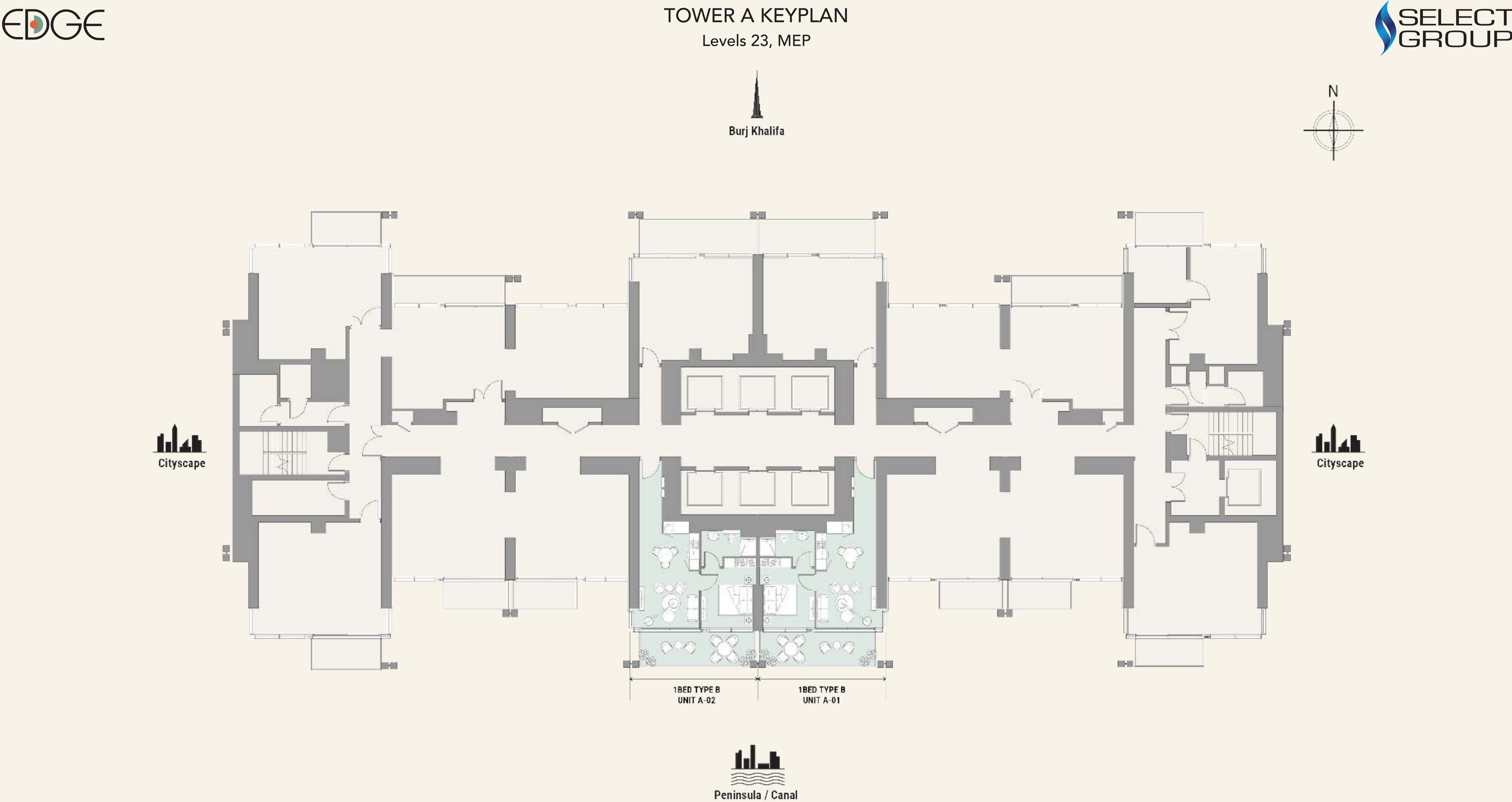


TOWER A KEYPLAN
Podium Level 4, Pool Deck





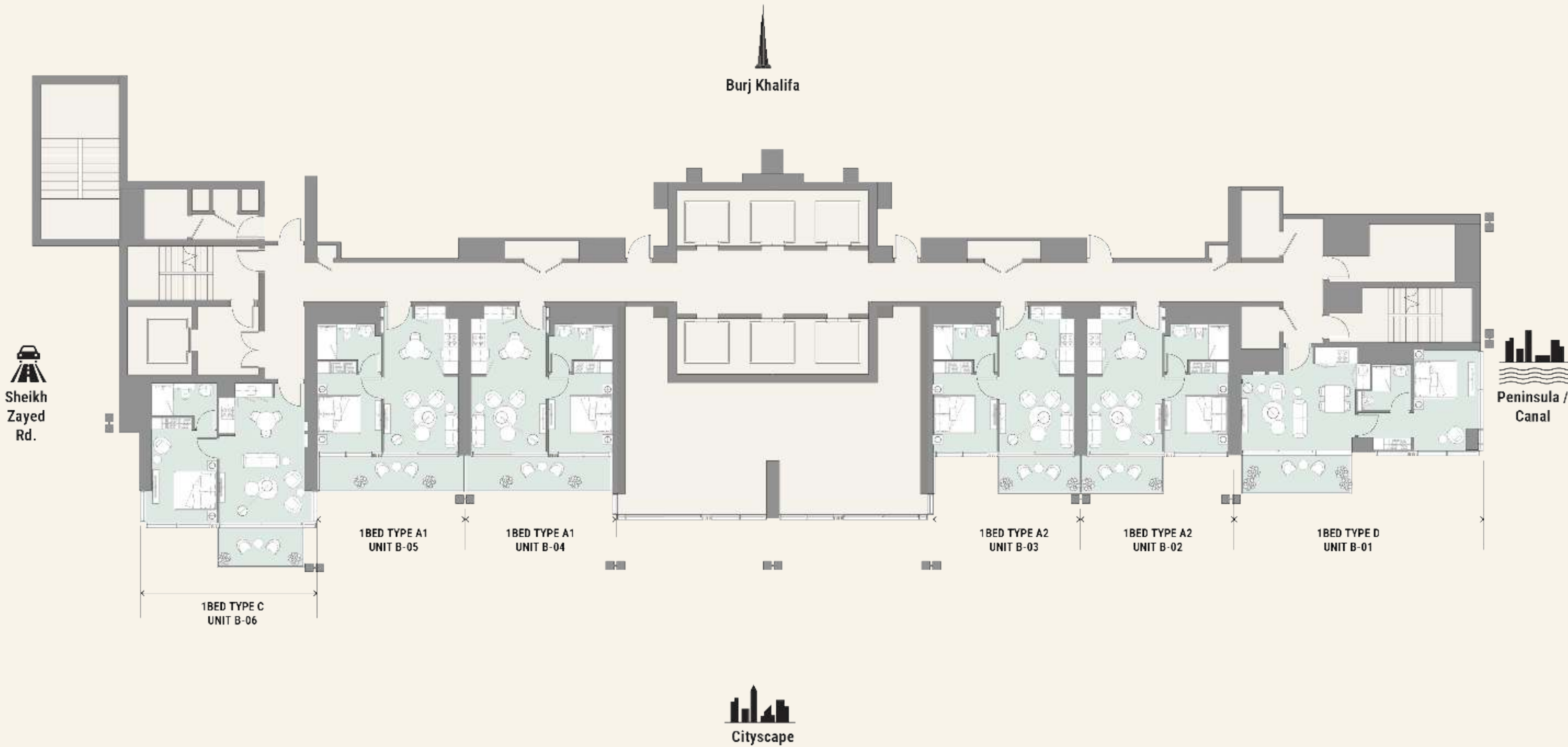




Drawings are provided by our consultants. All dimensions, features and amenities are approximate at time of printing. Actual size may vary from stated area. Drawings not to scale E & OE. The developer reserves the right to make revisions to the floor plans and any features, materials and dimensions mentioned without further notice.

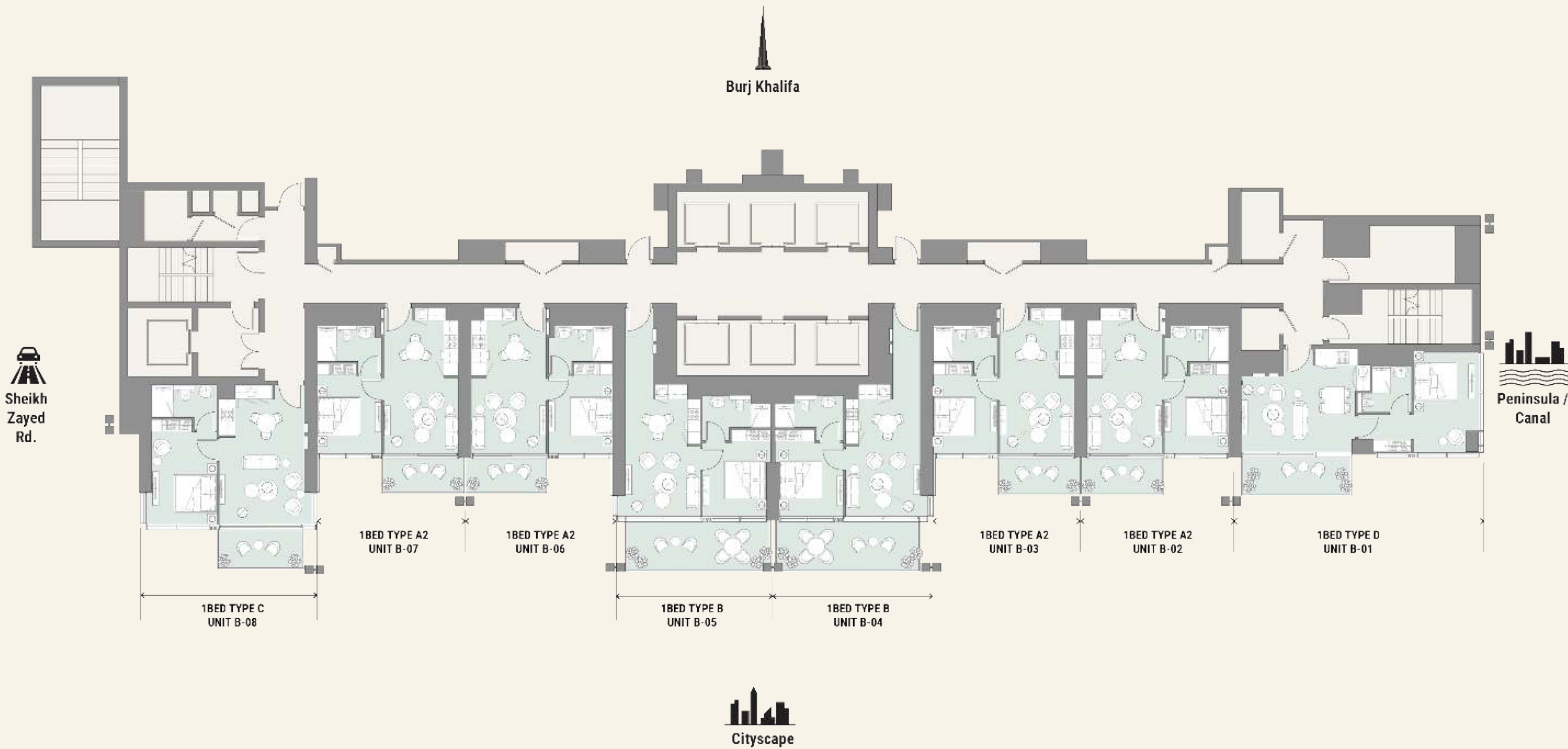


TOWER B KEYPLAN
Podium Level 1

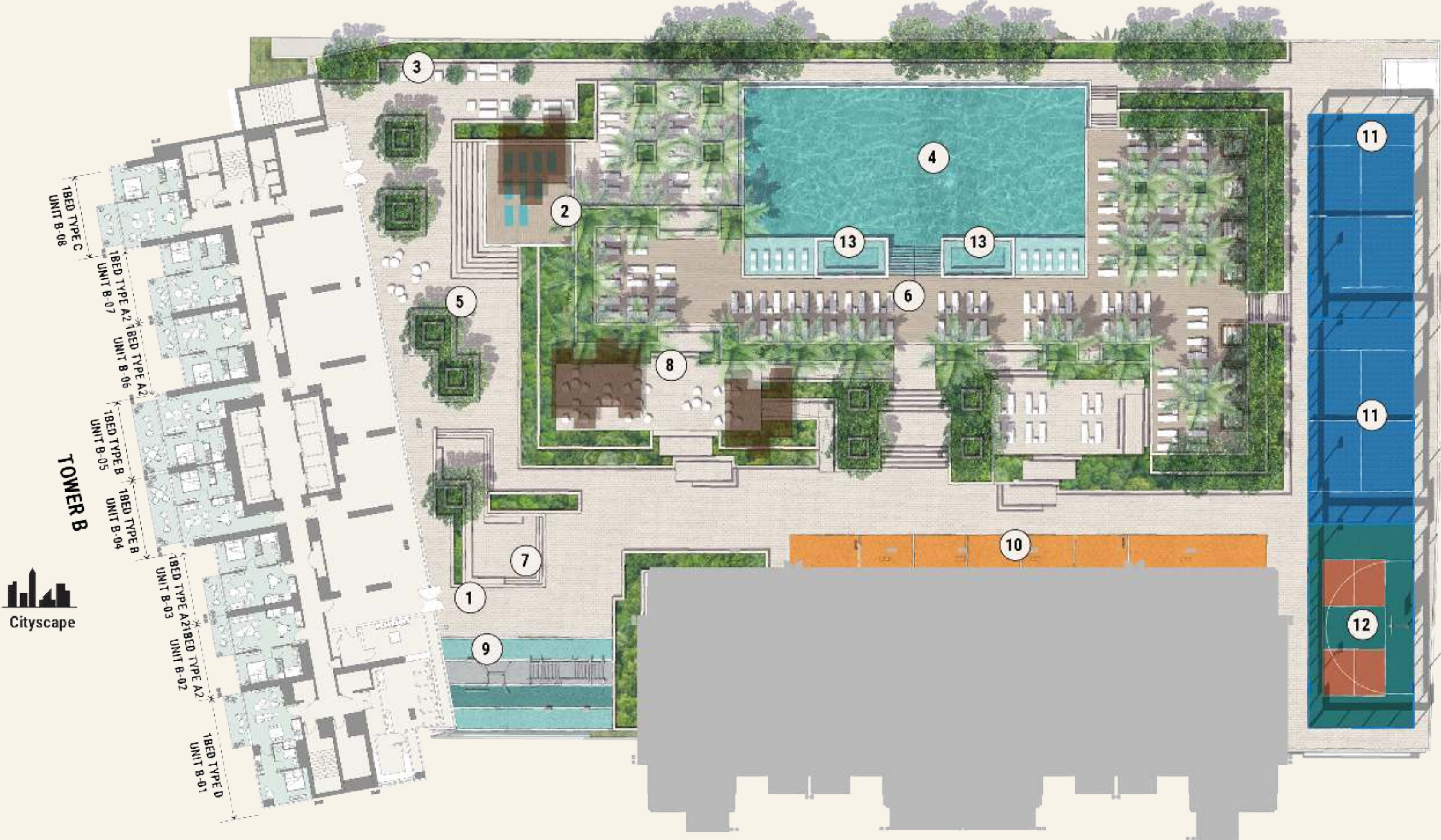


Drawings are provided by our consultants. All dimensions, features and amenities are approximate at time of printing. Actual size may vary from stated area. Drawings not to scale E & OE. The developer reserves the right to make revisions to the floor plans and any features, materials and dimensions mentioned without further notice.

TOWER B KEYPLAN
Podium Level 2 & 3



TOWER B KEYPLAN
Podium Level 4, Pool Deck



- 1. Lobby Entry
- 2. Yoga Deck
- 3. Lounge Area/Outdoor Seating
- 4. Community Pool
- 5. Courtyard
- 6. Pool Deck
- 7. Sunken Seating
- 8. BBQ Area
- 9. Outdoor Fitness Area
- 10. Sprint Track
- 11. Padel Court
- 12. Pickleball/Basketball Court
- 13. Jacuzzi



TOWER A



TOWER B KEYPLAN
Level 5



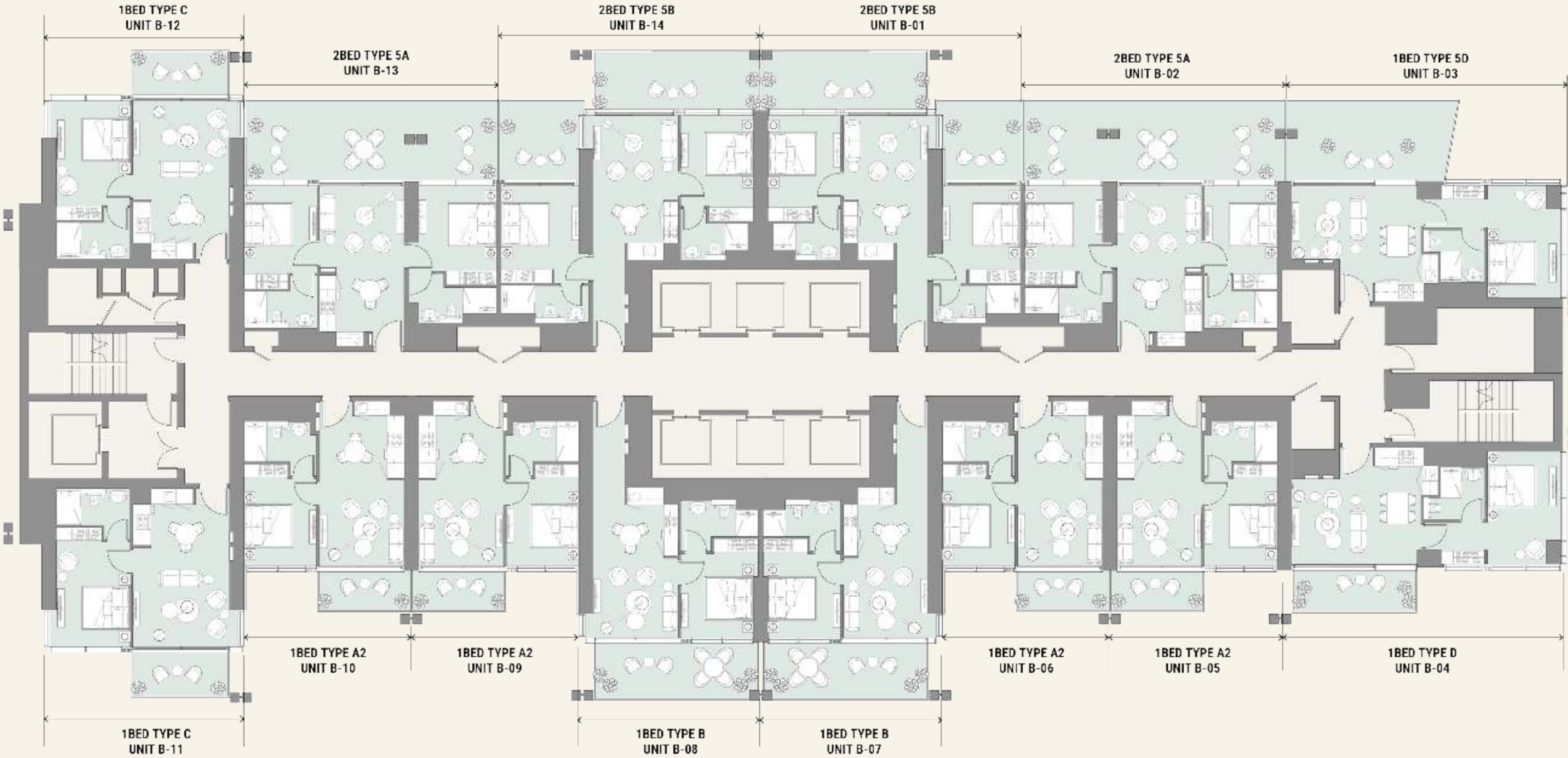
Burj Khalifa



Sheikh
Zayed
Rd.

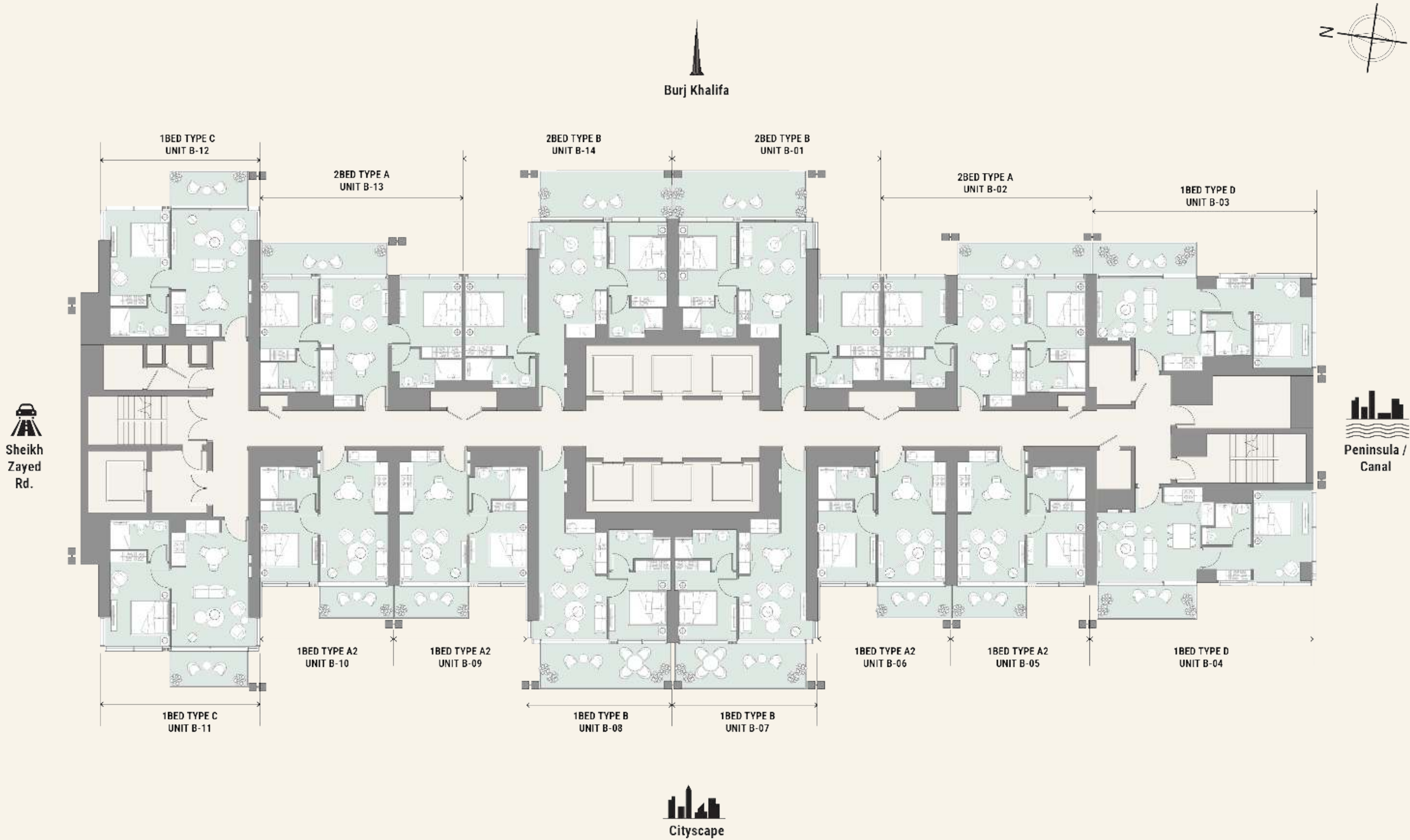


Peninsula /
Canal



Cityscape

TOWER B KEYPLAN
Levels 6-17 & 19-34, Typical Floor



TOWER B KEYPLAN
Level 18, MEP



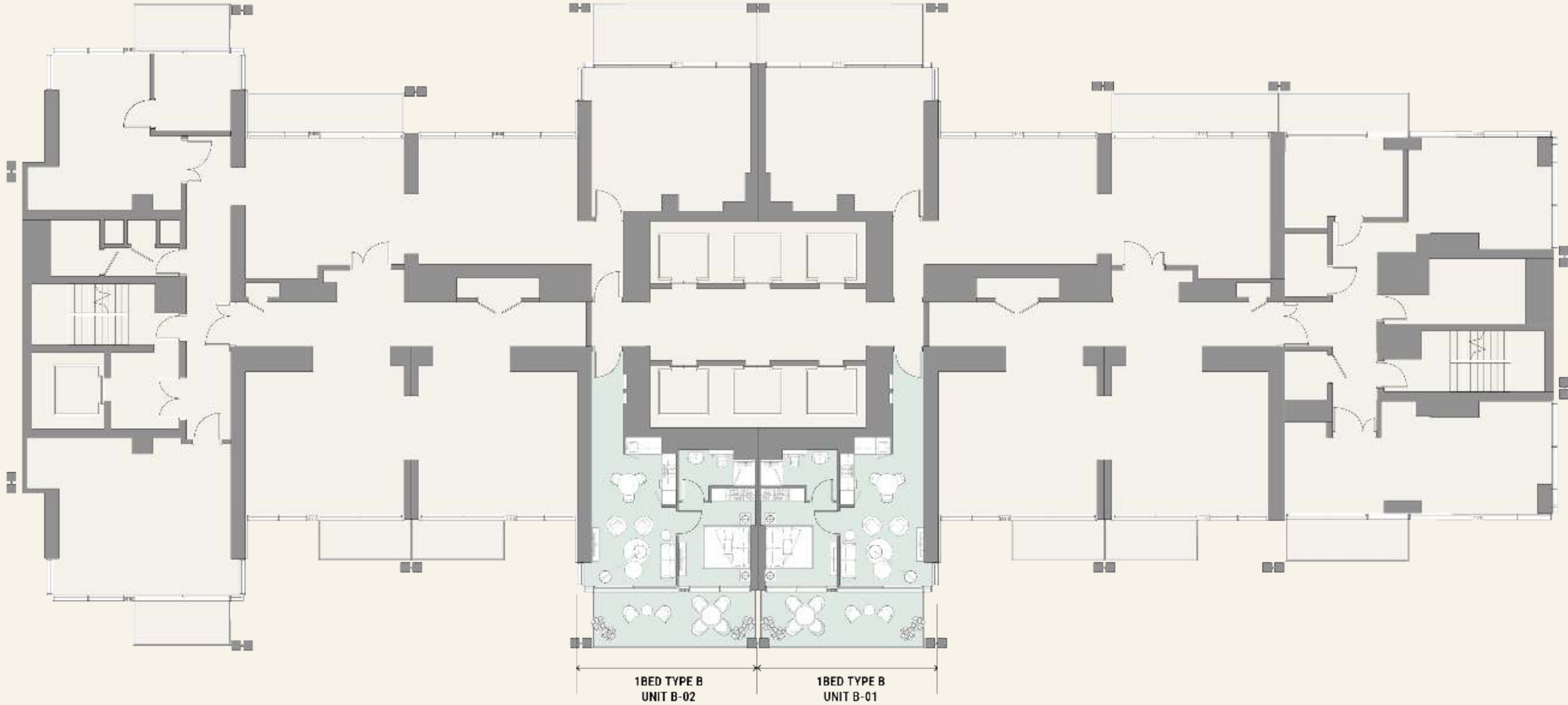
Burj Khalifa



Sheikh
Zayed
Rd.



Peninsula /
Canal



Cityscape