

2 Bedroom Townhouse - 2M



Ground Floor



First Floor

Gross Sellable Area
Total **217 m²**

DISCLAIMER: Note that this floorplan was produced prior to the completion of construction and is indicative only and not to scale. Changes may be made during the development and areas, fittings, finishes and specifications are subject to change without notice in accordance with the provision of the Sale and Purchase Agreement. The furniture, pools and landscaping depicted within the Villas and Plots are not included with any sale and the positioning of furniture should not be taken to indicate the final positions of power points, TV connections and the like. Prospective purchasers must rely on their own enquiries. Bulkheads necessary for services and structure are not depicted.

3 Bedroom Townhouse - 3MA



Ground Floor



First Floor

Gross Sellable Area

Total **312 m²**

DISCLAIMER: Note that this floorplan was produced prior to the completion of construction and is indicative only and not to scale. Changes may be made during the development and areas, fittings, finishes and specifications are subject to change without notice in accordance with the provision of the Sale and Purchase Agreement. The furniture, pools and landscaping depicted within the Villas and Plots are not included with any sale and the positioning of furniture should not be taken to indicate the final positions of power points, TV connections and the like. Prospective purchasers must rely on their own enquiries. Bulkheads necessary for services and structure are not depicted.

4 Bedroom Duplex - 4X

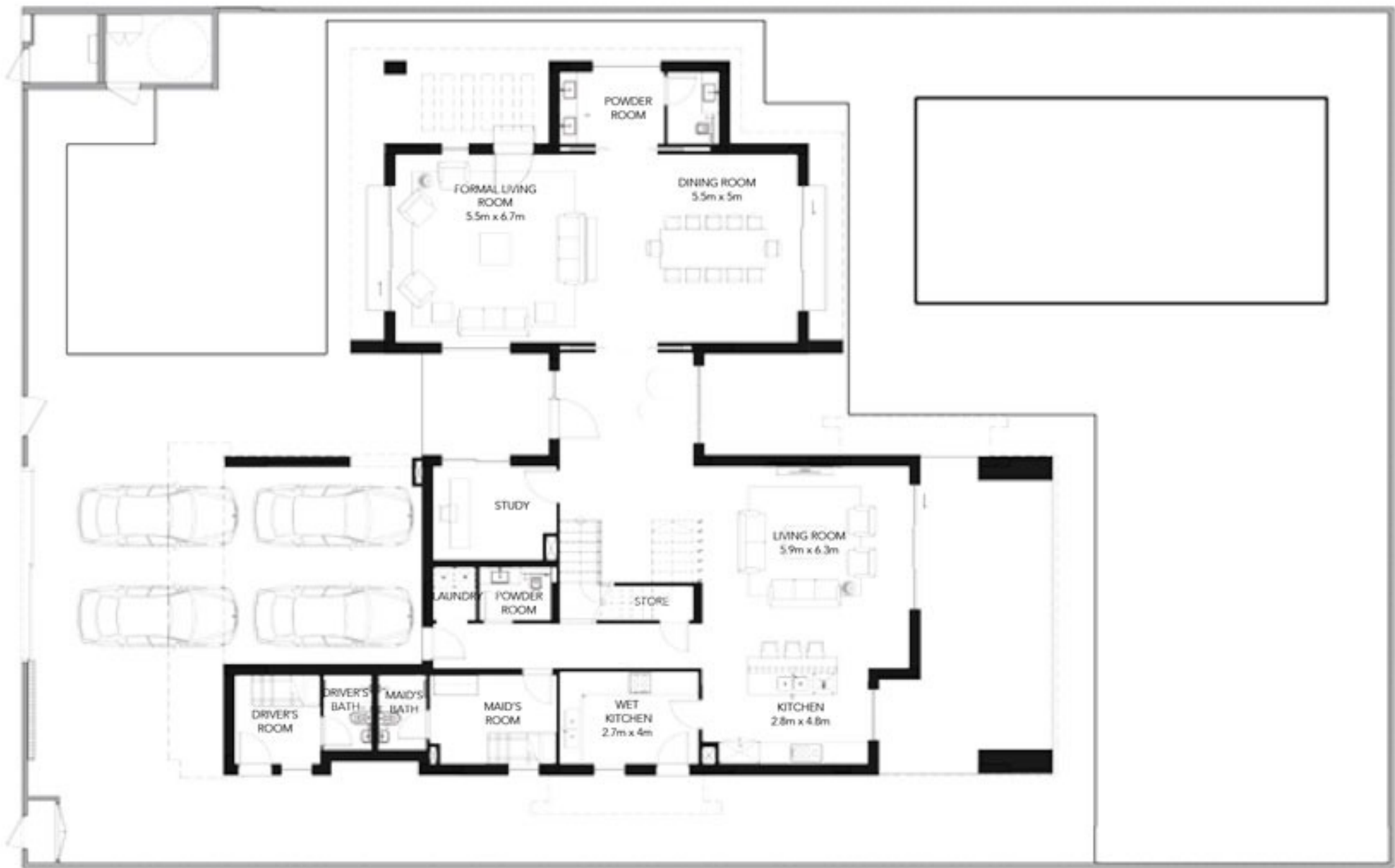


Gross Sellable Area

Total **347 m²**

DISCLAIMER: Note that this floorplan was produced prior to the completion of construction and is indicative only and not to scale. Changes may be made during the development and areas, fittings, finishes and specifications are subject to change without notice in accordance with the provision of the Sale and Purchase Agreement. The furniture, pools and landscaping depicted within the Villas and Plots are not included with any sale and the positioning of furniture should not be taken to indicate the final positions of power points, TV connections and the like. Prospective purchasers must rely on their own enquiries. Bulkheads necessary for services and structure are not depicted.

5 Bedroom Villa Golf - 5F



Ground Floor



First Floor

Gross Sellable Area
Total **570 m²**

DISCLAIMER: Note that this floorplan was produced prior to the completion of construction and is indicative only and not to scale. Changes may be made during the development and areas, fittings, finishes and specifications are subject to change without notice in accordance with the provision of the Sale and Purchase Agreement. The furniture, pools and landscaping depicted within the Villas and Plots are not included with any sale and the positioning of furniture should not be taken to indicate the final positions of power points, TV connections and the like. Prospective purchasers must rely on their own enquiries. Bulkheads necessary for services and structure are not depicted.