



LIV
MARINA

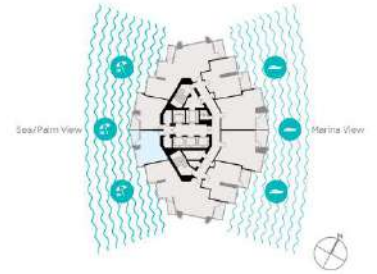
DUBAI MARINA

Studio Units

1 TYPE

- o Levels 5-10
- o Size: 514 sq ft
- o Prices starting from **AED 1.029 million**

Studio Apartment



Sample view from the apartment



Apartment Area	40.06 sqm	431.00 sqft
Balcony Area	7.72 sqm	83.00 sqft
Total Area	47.78 sqm	514.00 sqft

Sample view provided for our customers. All measurements, features and finishes are approximate at the time of printing. Actual view may vary from stated view. Drawings not to scale. © 2018. The Developer reserves the right to make modifications to the floor plans and any features, materials, and finishes, without notice. Sample view is illustrative and may differ from actual view.

One Bedroom Units

5 TYPES

- o 4 Units Types with Full Marina Views

Sizes:

- 747 sq ft
- 840 sq ft
- 872 sq ft
- 913 sq ft

- o 1 Type with Skyline/Partial Sea Views

- 817 sq ft

- o Prices starting from **AED 1.5 million**

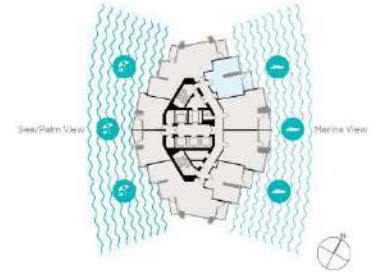


LIV
MARINA



Levels 5 - 10
Apartment 02

1 BR Apartment



Sample view from the apartment



Apartment Area	60.47 sqm	651.00 sqft
Balcony Area	8.90 sqm	96.00 sqft
Total Area	69.37 sqm	747.00 sqft

Drawings are provided by our consultants. All dimensions, features and materials are approximate at the time of printing. Actual measurements may vary from stated sizes. Drawings are to scale 1:50. The Developer reserves the right to make revisions to the floor plans and any fixtures, materials and dimensions mentioned without further notice. Sample views are illustrative and may differ or be subject to change.

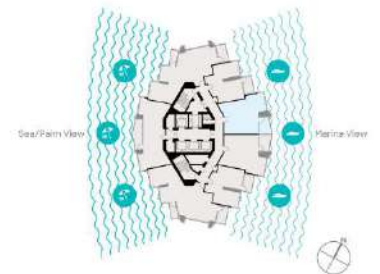


LIV
MARINA



Levels 5 - 24
Apartment 03

1 BR Apartment



Sample view from the apartment



Apartment Area	69.68 sqm	750.00 sqft
Balcony Area	11.30 sqm	122.00 sqft
Total Area	80.98 sqm	872.00 sqft

Drawings are provided by our consultants. All dimensions, features and materials are approximate at the time of printing. Actual measurements may vary from stated sizes. Drawings are to scale 1:50. The Developer reserves the right to make revisions to the floor plans and any fixtures, materials and dimensions mentioned without further notice. Sample views are illustrative and may differ or be subject to change.

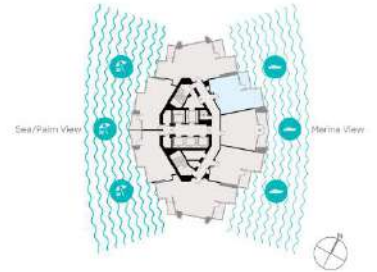


LIV
MARINA



Levels 26 - 36
Apartment 02

1 BR Apartment



Sample view from the apartment



Apartment Area	69.21 sqm	745.00 sqft
Balcony Area	8.83 sqm	95.00 sqft
Total Area	78.04 sqm	840.00 sqft

Drawings are provided by our consultants. All dimensions, features and amenities are approximate at the time of printing. Actual view may vary from stated area. Drawings not to scale 1:400. The Developer reserves the right to make revisions to the floor plans and any fixtures, materials and finishes, without written notice. Sample views are illustrative and may differ or be subject to change.

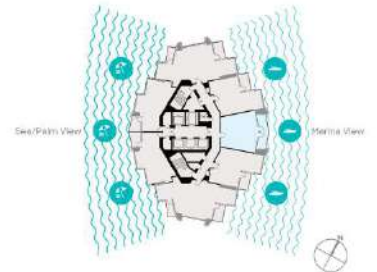


LIV
MARINA



Levels 26 - 36
Apartment 03

1 BR Apartment



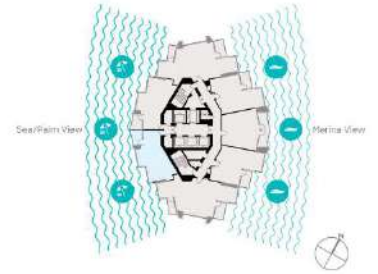
Sample view from the apartment



Apartment Area	66.12 sqm	712.00 sqft
Balcony Area	18.72 sqm	201.00 sqft
Total Area	84.84 sqm	913.00 sqft

Drawings are provided by our consultants. All dimensions, features and amenities are approximate at the time of printing. Actual view may vary from stated area. Drawings not to scale 1:400. The Developer reserves the right to make revisions to the floor plans and any fixtures, materials and finishes, without written notice. Sample views are illustrative and may differ or be subject to change.

1 BR Apartment



Sample view from the apartment



Apartment Area	56.31 sqm	714.00 sqft
Balcony Area	9.57 sqm	103.00 sqft
Total Area	75.88 sqm	817.00 sqft

Drawings are provided for your convenience. All dimensions, features and amenities are approximate and subject to change. Actual view may vary from island view. Drawings not to scale 1:500. The Developer reserves the right to make revisions to the floor plan and any features, materials and finishes without further notice. Sample views are illustrative and may differ or be subject to change.

Two Bedroom Units

3 TYPES

- o 2 Unit Types with Full Marina Views
 - Levels 5-24: 2BR Unit with Full Marina View @ 1309 sq ft
 - Levels 26-36: 2BR + Maids/Study Unit with Full Marina View @ 1336 sq ft
- o 1 Type with Skyline/Partial Sea Views
 - Levels 11-24: 2BR Unit @ 1056 sq ft
- o Prices starting from **AED 2 million**

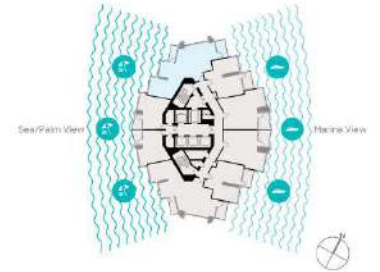


LIV
MARINA



Levels 5 - 24
Apartment 01

2 BR Apartment



Sample view from the apartment



Apartment Area	105.72 sqm	1138.00 sqft
Balcony Area	15.89 sqm	171.00 sqft
Total Area	121.61 sqm	1309.00 sqft

Drawings are provided by our consultants. All dimensions, features and amenities are approximate as the time of printing. Actual area may vary from stated area. Drawings not to scale 1:50. The Developer reserves the right to make revisions to the floor plans and any features, materials and dimensions (marked with //) further notice. Sample views are indicative and may differ in the actual experience.

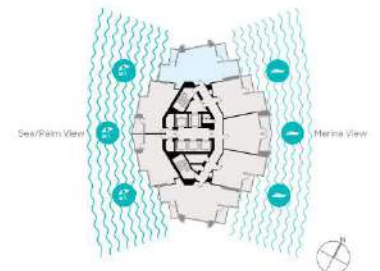


LIV
MARINA



Levels 26 - 36
Apartment 01

2 BR+Study Apartment



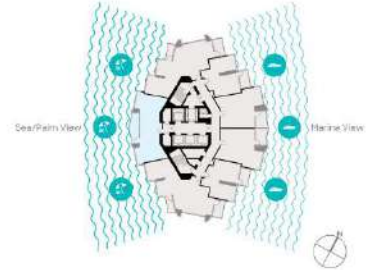
Sample view from the apartment



Apartment Area	108.19 sqm	1165.00 sqft
Balcony Area	15.89 sqm	171.00 sqft
Total Area	124.08 sqm	1336.00 sqft

Drawings are provided by our consultants. All dimensions, features and amenities are approximate as the time of printing. Actual area may vary from stated area. Drawings not to scale 1:50. The Developer reserves the right to make revisions to the floor plans and any features, materials and dimensions (marked with //) further notice. Sample views are indicative and may differ in the actual experience.

2 BR Apartment



Sample view from the apartment



Apartment Area	83.68 sqm	901.00 sqft
Balcony Area	14.38 sqm	155.00 sqft
Total Area	98.06 sqm	1056.00 sqft

Drawings are provided by our consultants. All dimensions, fixtures and finishes are approximate of the time of printing. Actual area may vary from stated area. Drawings not to scale 1:8.50. The developer reserves the right to make revisions to the floor plan and any fixtures, materials and dimensions mentioned without further notice. Sample view is indicative and may differ or be subject to change.

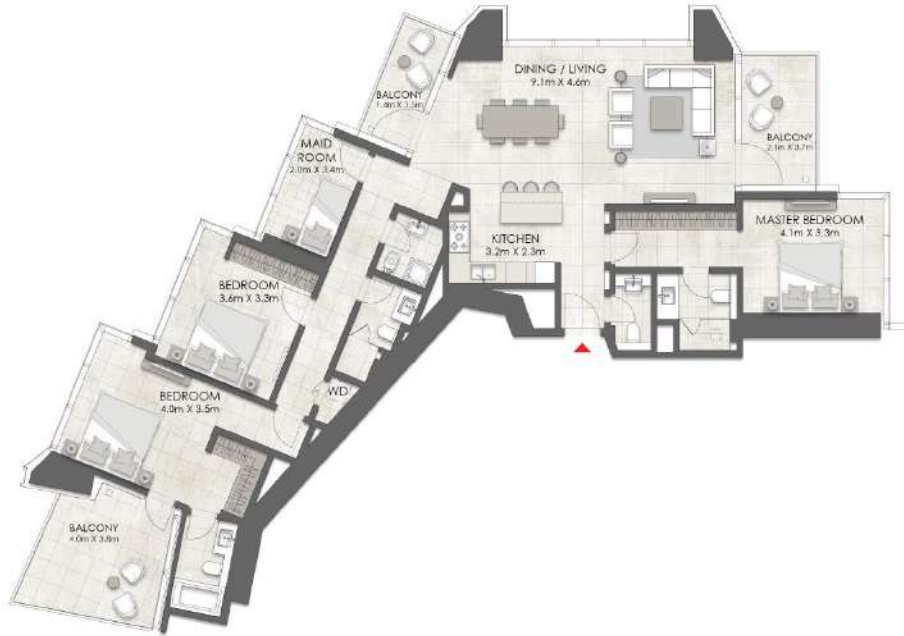
Three Bedroom Units

2 TYPES

- o 3 Bedroom Units with Full Marina view @ 2115 sq ft
- o 3 Bedroom Signature Apartments with LIV Luxury Finishes @ 2576 sq ft
 - Both types of 3 Bedroom Apartments have full marina views
 - Both types of 3 Bedroom Units have maids rooms
- o Prices starting from **AED 4 million**

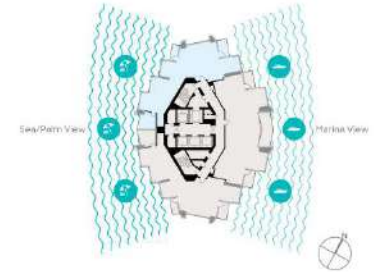


LIV
MARINA



Levels 41 - 42
Apartment 01

3 BR+Maid Apartment



Sample view from the apartment



Apartment Area	165.55 sqm	1782.00 sqft
Balcony Area	30.96 sqm	333.25 sqft
Total Area	196.51 sqm	2115.25 sqft

Drawings are provided for our customers. All dimensions, features and amenities are approximate of the time of printing. Actual area may vary from stated area. Drawings not to scale 1:800. This document reserves the right to make revisions to the floor plans and site features, materials and structures (marked with //) without notice. Sample views are indicative and may differ in the actual design.

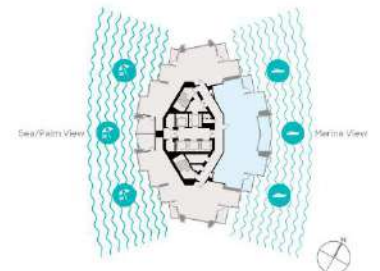


LIV
MARINA



Levels 37 - 40
Apartment 02

3 BR+Maid Signature Apartment



Sample view from the apartment



Apartment Area	199.30 sqm	2145.00 sqft
Balcony Area	40.60 sqm	437.00 sqft
Total Area	239.90 sqm	2582.00 sqft

Drawings are provided for our customers. All dimensions, features and amenities are approximate of the time of printing. Actual area may vary from stated area. Drawings not to scale 1:800. This document reserves the right to make revisions to the floor plans and site features, materials and structures (marked with //) without notice. Sample views are indicative and may differ in the actual design.

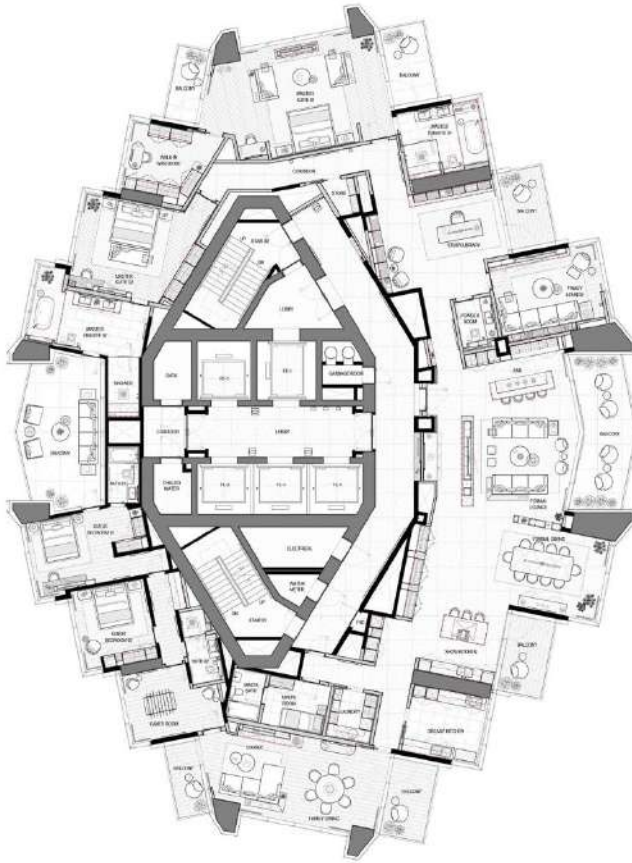


SIGNATURE APARTMENTS

Full Floor Signature Penthouses

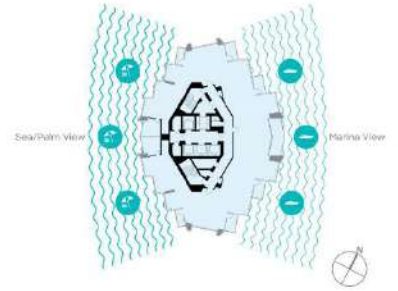
1 TYPE

- o Levels 43 - 44
- o 6732 sq feet
- o 4 Bedroom Signature Penthouse
- o Uber Luxury Finishes
- o Full Marina Views and Panoramic Palm and Sea Views
- o Price Upon Request



Levels 43 - 44

Full Floor Signature Penthouse



Sample view from the apartment



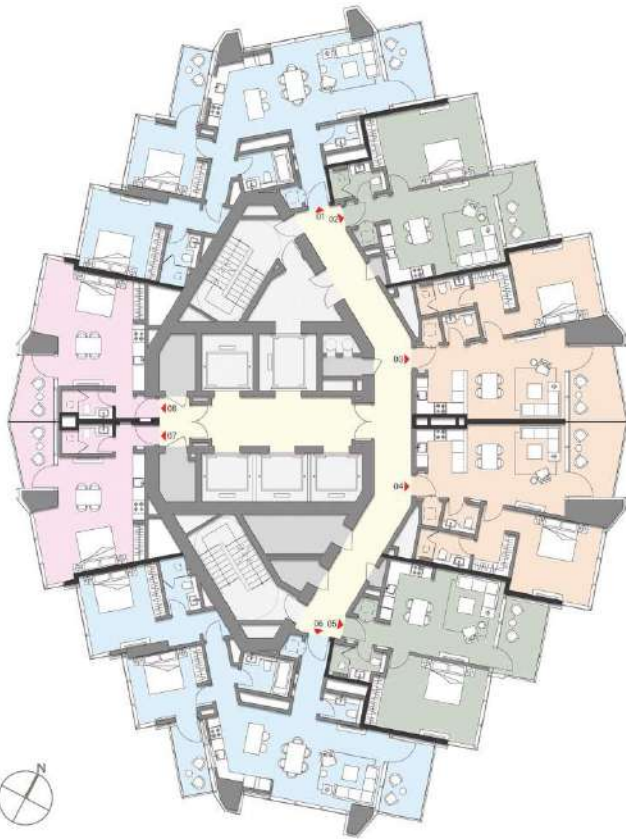
Apartment Area	523.69 sqm	5637.00 sqft
Balcony Area	101.74 sqm	1095.00 sqft
Total Area	625.43 sqm	6732.00 sqft

Dimensions are provided by our consultants. All dimensions, fixtures and materials are approximate at the time of printing. Actual areas may vary from stated areas. Drawings not to scale 1:100. The Developer reserves the right to make changes to the floor plans and any fixtures, materials and dimensions mentioned without further notice. Sample views are indicative and may differ or be subject to change.



LIV
MARINA

TYPICAL FLOORPLANS

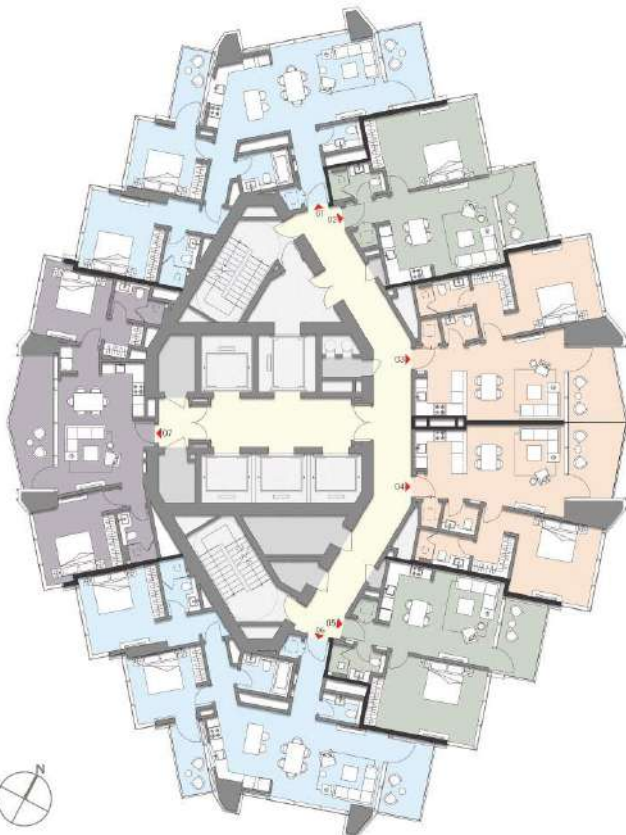
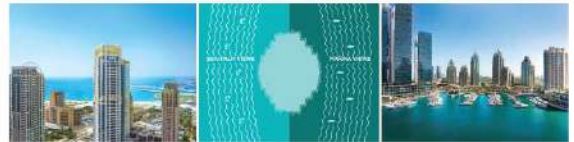


LIV
MARINA

TYPICAL FLOORPLANS
Residential Levels

Levels 5 - 10
Studios, 1 & 2 Beds

- Studios
Units 07, 08
- 1 BR A
Units 02, 05
- 1 BR C1
Units 03, 04
- 2 BR B
Units 01, 06



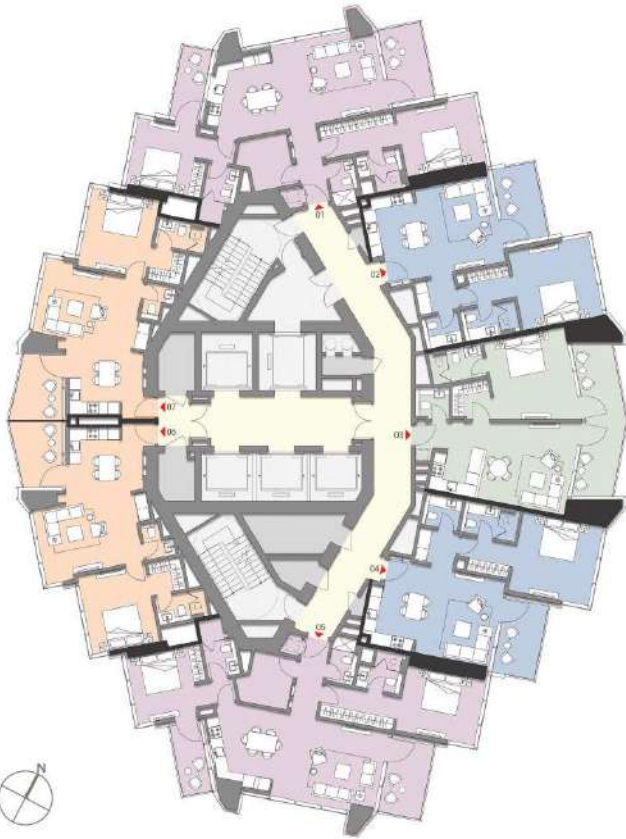
LIV
MARINA

TYPICAL FLOORPLANS
Residential Levels

Levels 11 - 24
1 & 2 Beds

- 1 BR A
Units 02, 05
- 1 BR C1
Units 03, 04
- 2 BR A
Units 07
- 2 BR B
Units 01, 06



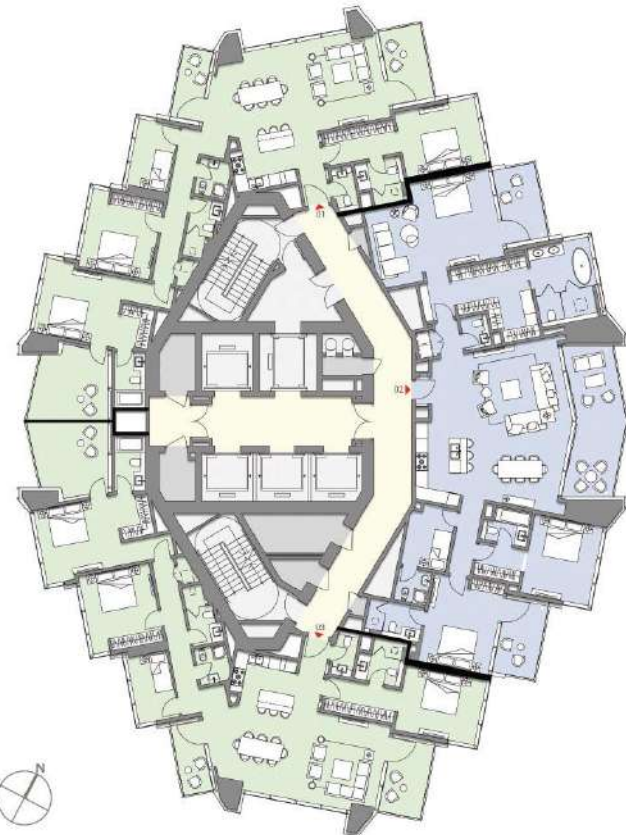
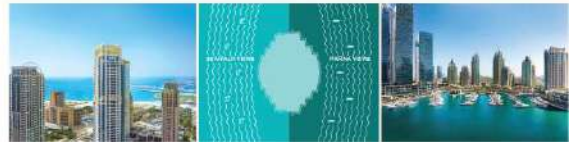


LIV
MARINA

TYPICAL FLOORPLANS
Residential Levels

Levels 26 - 36
1 & 2 Beds

- 1 BR B1
Units 02, 04
- 1 BR B2
Units 06, 07
- 1 BR C2
Units 03
- 2 BR C
Units 01, 05



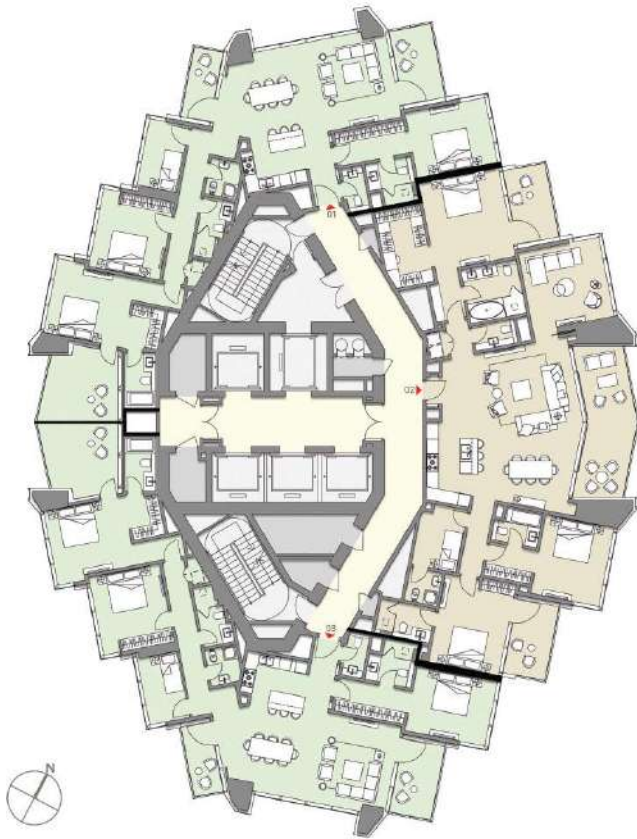
LIV
MARINA

TYPICAL FLOORPLANS
Residential Levels

Levels 37 - 40
3 Beds

- 3 BR A
Units 01, 03
- 3 BR B - SIGNATURE
Units 02





LIV
MARINA

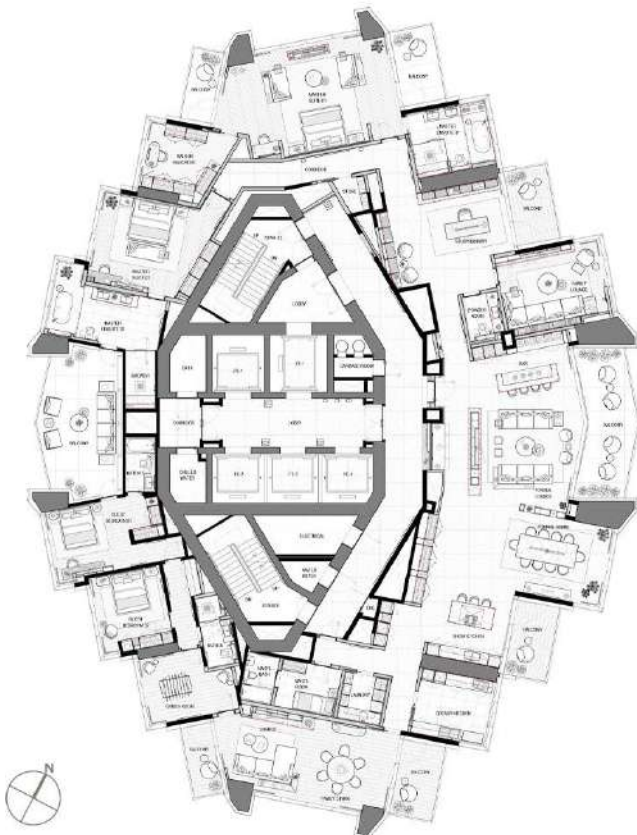
TYPICAL FLOORPLANS
Residential Levels

Levels 41 - 42

3 Beds

3 BR A
Units 01, 03

3 BR B - SIGNATURE
Units 02



LIV
MARINA

TYPICAL FLOORPLANS
Residential Levels

Levels 43 - 44

Full Floor
Signature
Penthouse

