

1 BEDROOM APARTMENT

LAYOUT TYPE: SIMPLEX

TOTAL LIVING: 795SQ.FT.

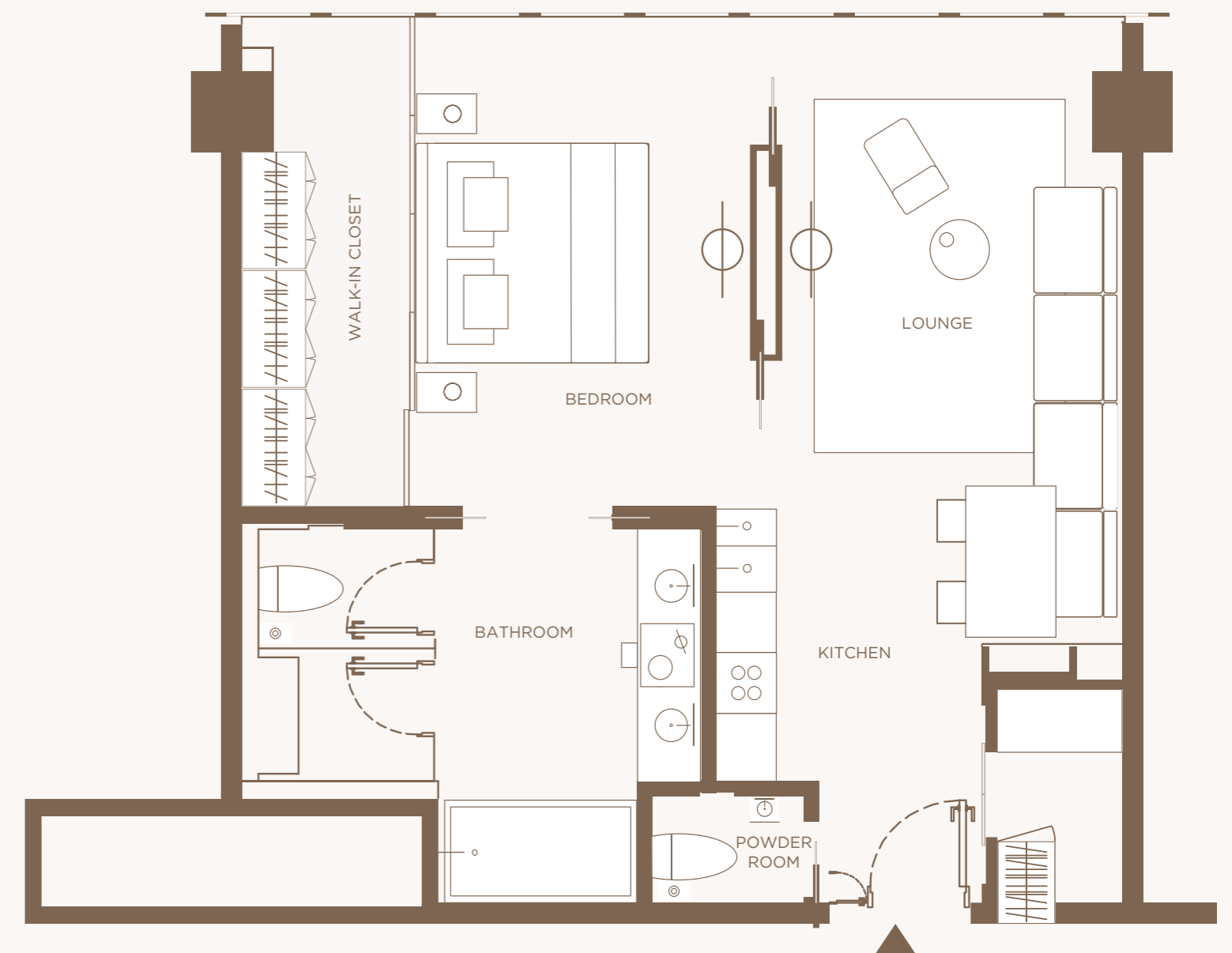
LEVEL: 54

FLOOR RANGE: 54-60

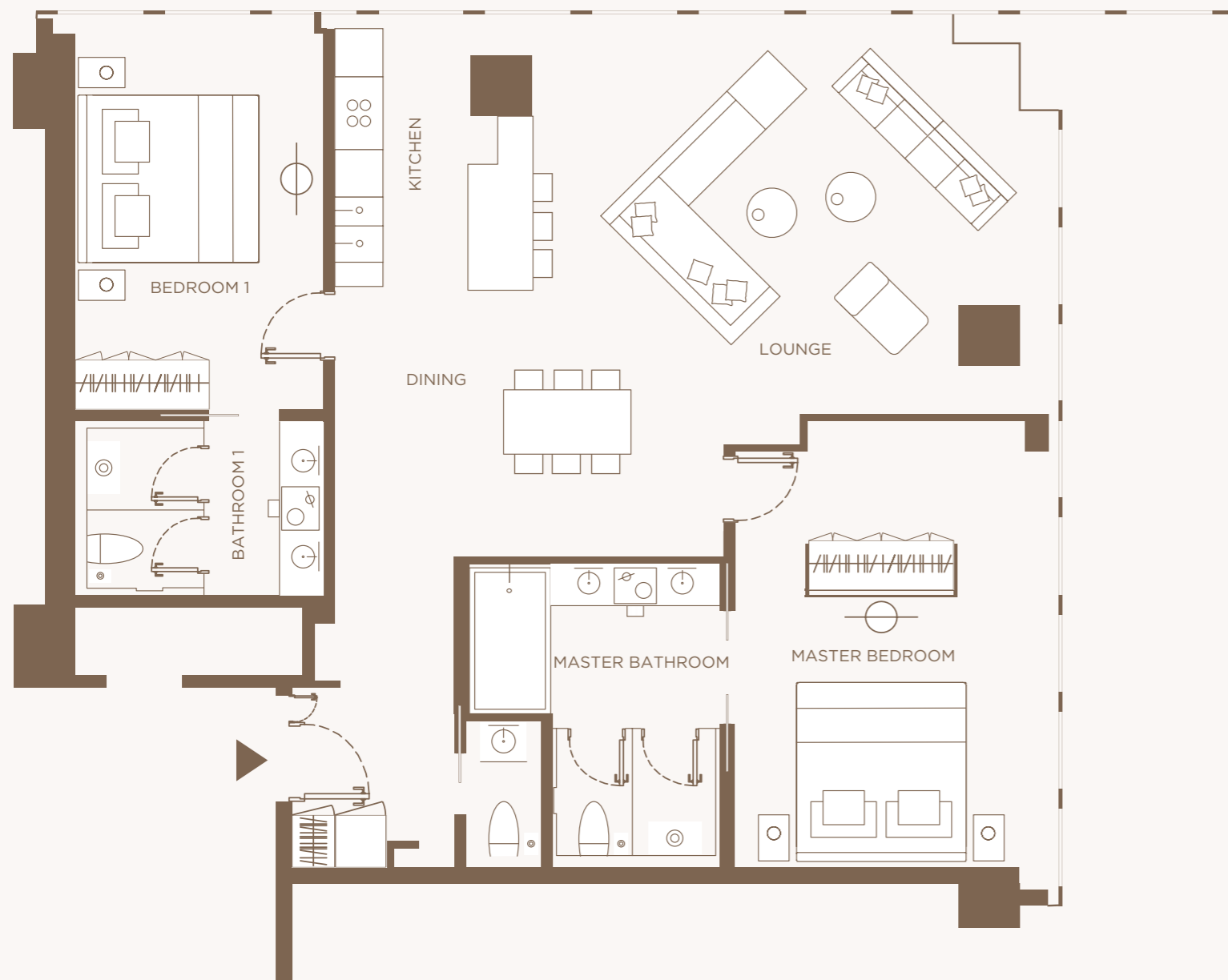
VIEW: LINK VIEW AND BURJ KHALIFA VIEW

Epitomising the convenience of city living, the one-bedroom apartments offer a seamless flow from the open kitchen to the lounge, through to a generous bedroom. Here, a spa-like bathroom and walk-in closet add resort-style luxury to the contemporary space.

1 BEDROOM - TYPE AP1



2 BEDROOM - TYPE AP2



2 BEDROOM APARTMENT

LAYOUT TYPE: SIMPLEX

TOTAL LIVING: 1,361SQ.FT.

LEVEL: 54

FLOOR RANGE: 54-60

VIEW: LINK VIEW/WORLD TRADE CENTER

ROUNABOUT VIEW/ZAABEEL/BURJ

KHALIFA

Designed to capitalise on picturesque views from every room, the two-bedroom apartments promise a premium lifestyle. Entertain from the comfort of your open kitchen, lounge and dining space, then retreat to the master bedroom, complete with opulent bathroom.

3 BEDROOM APARTMENT

LAYOUT TYPE: DUPLEX

TOTAL LIVING: 3,620SQ.FT.

LEVEL: 57

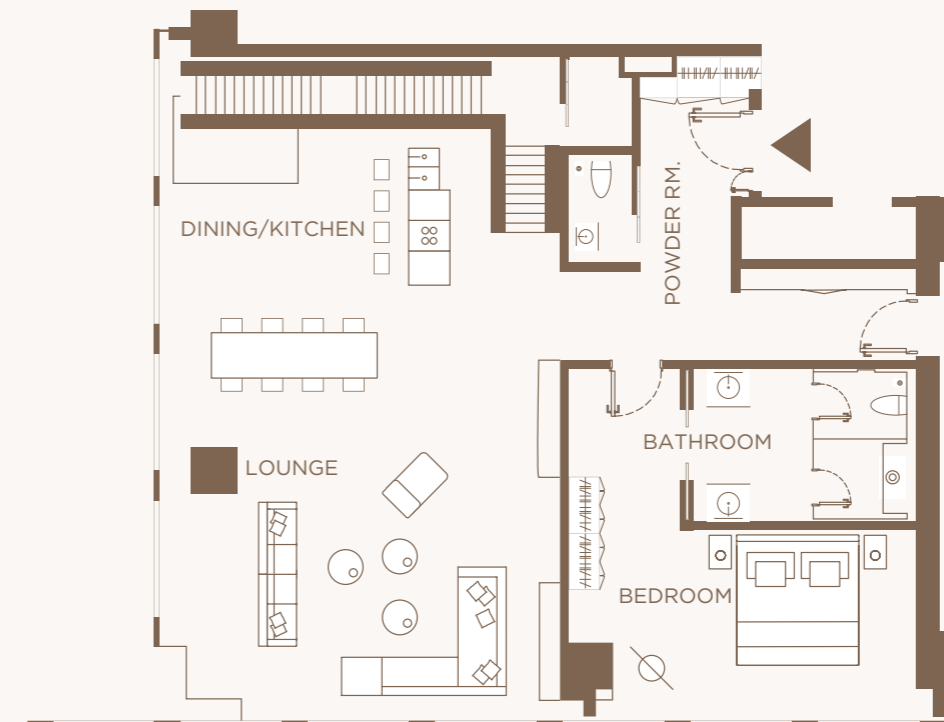
FLOOR RANGE: 57-60

VIEW: BURJ KHALIFA VIEW/WORLD TRADE CENTRE
ROUNABOUT VIEW

Spread over two storeys, the three-bedroom duplexes are designed with entertaining in mind. On the lower level, an open living and kitchen concept showcases captivating city views, alongside a bedroom with ensuite. Upstairs, the master bedroom with walk-in closet and a third ensuite bedroom await.

3 BEDROOMS - TYPE AP5

LOWER LEVEL



UPPER LEVEL

