

LA VOILE

BY PORT DE LA MER



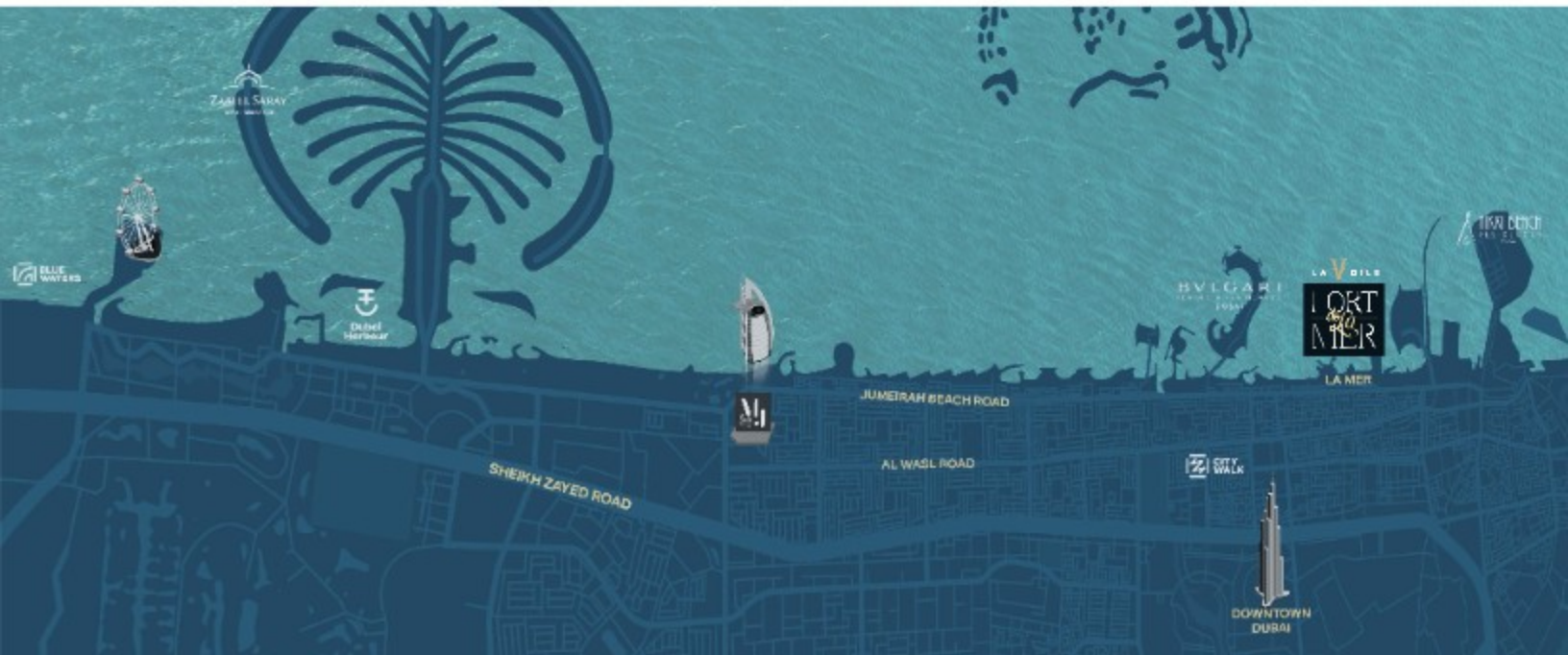
CONTEMPORARY
WATERFRONT
LIVING IN THE
HEART OF JUMEIRAH



MERAAS

IS DEDICATED TO MAKING DUBAI AND THE UAE EVEN BETTER FOR PEOPLE TO LIVE, WORK AND PLAY.

OUR DESIGN AIMS TO CONNECT ALL OF OUR DIVERSE PEOPLES AT SOME OF DUBAI'S MOST SOUGHT-AFTER ADDRESSES. OUR RESIDENCES AT CITY WALK, BLUEWATERS, JUHEIRA BAY, PEARL JUHEIRA AND LA MER STIMULATE A CREATIVE URBAN CULTURE OF THRIVING COMMUNITIES. MERAAS' CONTINUING INVESTMENT IN FOOD, RETAIL, LEISURE, HOSPITALITY, HEALTH AND REAL ESTATE IS ENSURING A BETTER, MORE PROSPEROUS FUTURE FOR GENERATIONS TO COME.





LA MER

SET WITHIN THE PRESTIGIOUS JUMEIRAH 1 DISTRICT, LA MER IS AN INSPIRATIONAL BEACHFRONT DESTINATION.

WITH MINIMALIST CONTEMPORARY DESIGN, IT BOASTS PREMIUM DINING, SHOPPING, ENTERTAINMENT, LEISURE AND HOSPITALITY EXPERIENCES ALONG 2.5 KILOMETRES OF PRISTINE BEACHES.

THE RESIDENTIAL COMMUNITY HERE BENEFITS FROM EXCELLENT CONNECTIVITY TO THE CITY'S MOST POPULAR ATTRACTIONS, AND EASY ACCESSIBILITY TO DUBAI'S INTERNATIONAL AIRPORTS.

CONNECTIVITY

PORT DE LA MER IS EASILY ACCESSIBLE FROM ALL MAJOR ROAD LINKS. LOCATED WITHIN LA MER AND ONLY MINUTES AWAY FROM CITY WALK, THIS WATERSIDE DESTINATION HAS EVERYTHING ONE COULD DESIRE WITHIN CLOSE VICINITY.

DUBAI INTERNATIONAL AIRPORT IS ONLY A SHORT DRIVE AWAY, AND FOR THOSE WHO ENJOY THE GLITZ AND GLAMOUR OF THE CITY, SHOPPING, LEISURE AND DINING EXPERIENCES ARE ALSO AT YOUR DOORSTEP.

5 MINUTES TO
LA MER
BY MERAAS



10 MINUTES TO
DOWNTOWN
DUBAI



15 MINUTES TO
DUBAI
INTERNATIONAL
AIRPORT



10 MINUTES TO
CITY WALK
BY MERAAS



45 MINUTES TO
AL MAKTOUM
INTERNATIONAL
AIRPORT





PORT DE LA MER

INSPIRED BY THE CHARM OF THE MEDITERRANEAN, PORT DE LA MER OFFERS PANORAMIC VIEWS OF THE OPEN WATER AND DUBAI SKYLINE. THE RESIDENCES BLEND VINTAGE ARCHITECTURE AND CONTEMPORARY INTERIOR DESIGN, WHILE BEING ENCIRCLED BY THE COAST, PRESENTING A PICTURE OF VIBRANT YET LAID-BACK SEASIDE LIFE.



AMENITIES

PORT DE LA MER BOASTS PREMIUM AMENITIES IN STUNNING SETTINGS. ITS BRIDGES CONNECT THE DIFFERENT SPACES TOGETHER, FROM BUSTLING PIAZZAS TO ITS INVITING OPEN SPACES, ALL OF WHICH SURROUND ITS CENTRAL POOLIUM.

RESTAURANTS, HOTELS AND RETAIL OUTLETS ALONG THE WATERFRONT FURTHER INFUSE ENERGY AND VITALITY INTO LIFE AT PORT DE LA MER. VISITORS AND RESIDENTS HERE CAN INDULGE IN:

+190 BERTH MARINA AND YACHT CLUB



5-STAR HOSPITALITY EXPERIENCES



SEASIDE AND MARINA PROMENADES



BEACH ACCESS



FASHIONABLE BOUTIQUES AND RESTAURANTS



MAGNIFICENT SWIMMING POOLS



OUTDOOR PARK WITH KIDS PLAY AREAS



PRIVATE LANDSCAPED TERRACES



EXCELLENT PRIVATE FACILITIES AMENITIES AND CAFES

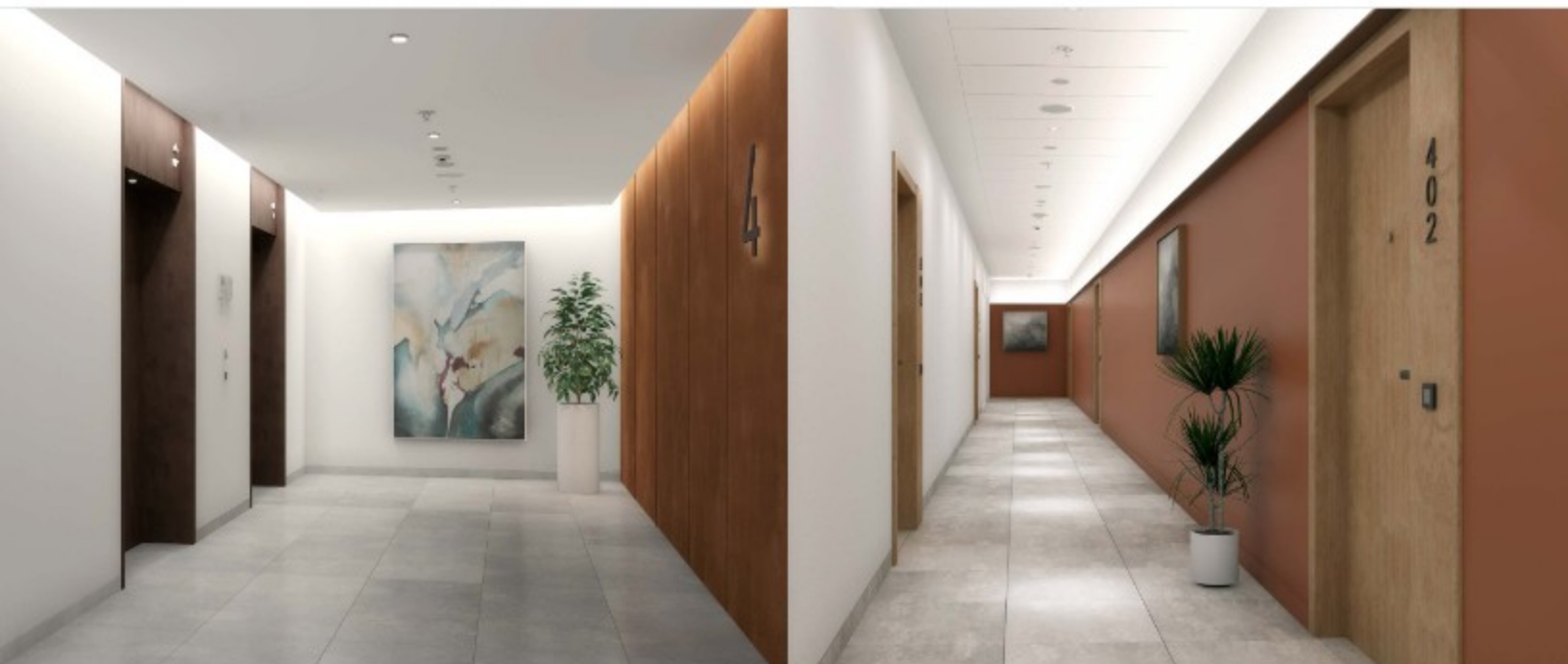


LA VOILE

BEING THE LATEST ADDITION TO THE MOST EXCLUSIVE ISLAND IN DUBAI, LA VOILE BRINGS A DISTINCT CHARM TO THE COMMUNITY. THIS IS WHERE MEMORIES ARE MADE BY THE SEASIDE AND DREAMS OF SKYLINE VIEWS BECOME A REALITY. CHOOSE FROM A SELECTION OF 1, 2, 3, 4 AND 5-BEDROOM APARTMENTS.









BUILDING 3



BUILDING 3









LEGEND:

- LA COTE
- LA RIVE
- LE PONT
- LA VOILE
- HOTELS
- ▲ LA MER & PDLM ENTRIES
- ▲ BEACH ACCESS
- 1 PDLM BEACH
- 2 PDLM MARINA
- 3 YACHT CLUB
- 4 SUR LA MER
- 5 LAGUNA WATER PARK
- 6 LA MER BEACH
- 7 RESTAURANTS & RETAIL
- 8 DUBAI MARINE RESORT
- 9 PALM STRIP MALL
- 10 JUMEIRAH MOSQUE
- 11 JUMEIRAH CENTRE
- 12 THE VILLAGE MALL
- 13 JUMEIRAH PLAZA
- 14 CENTURY PLAZA

MASTERPLAN

LA VOILE