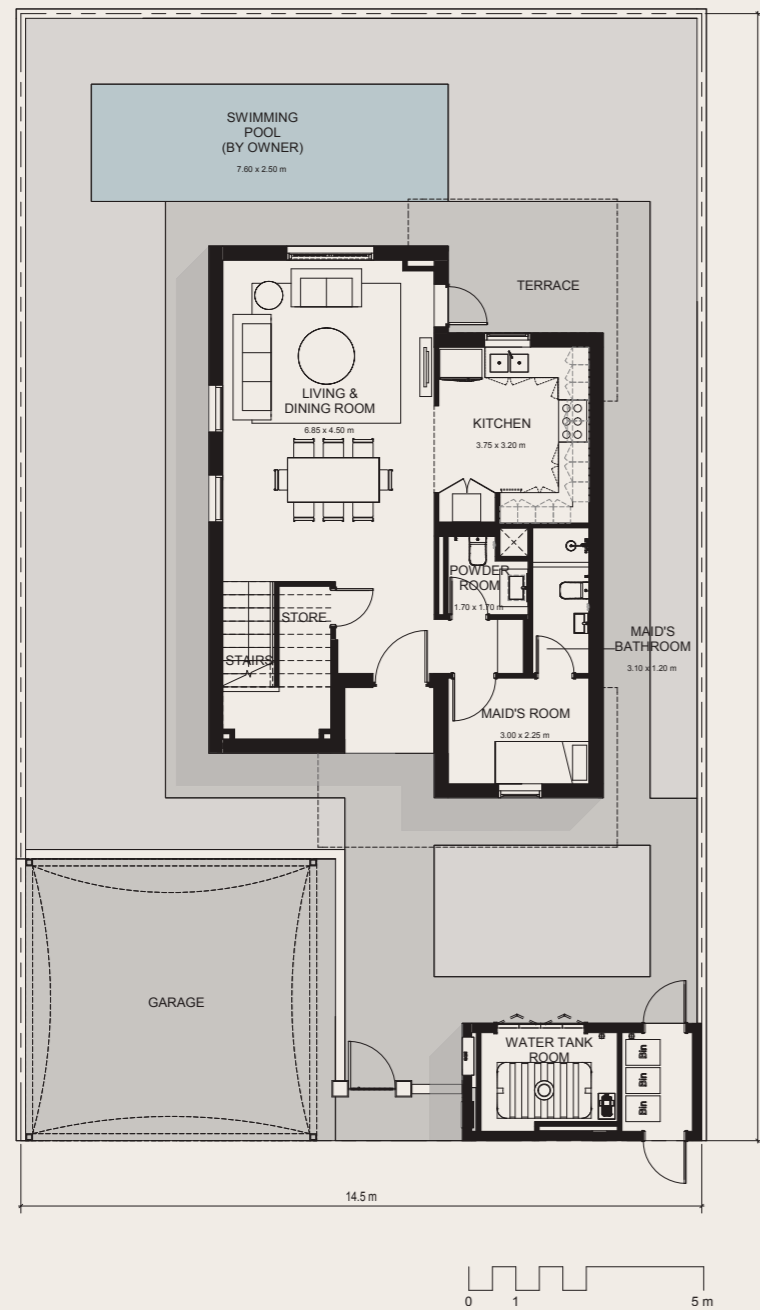


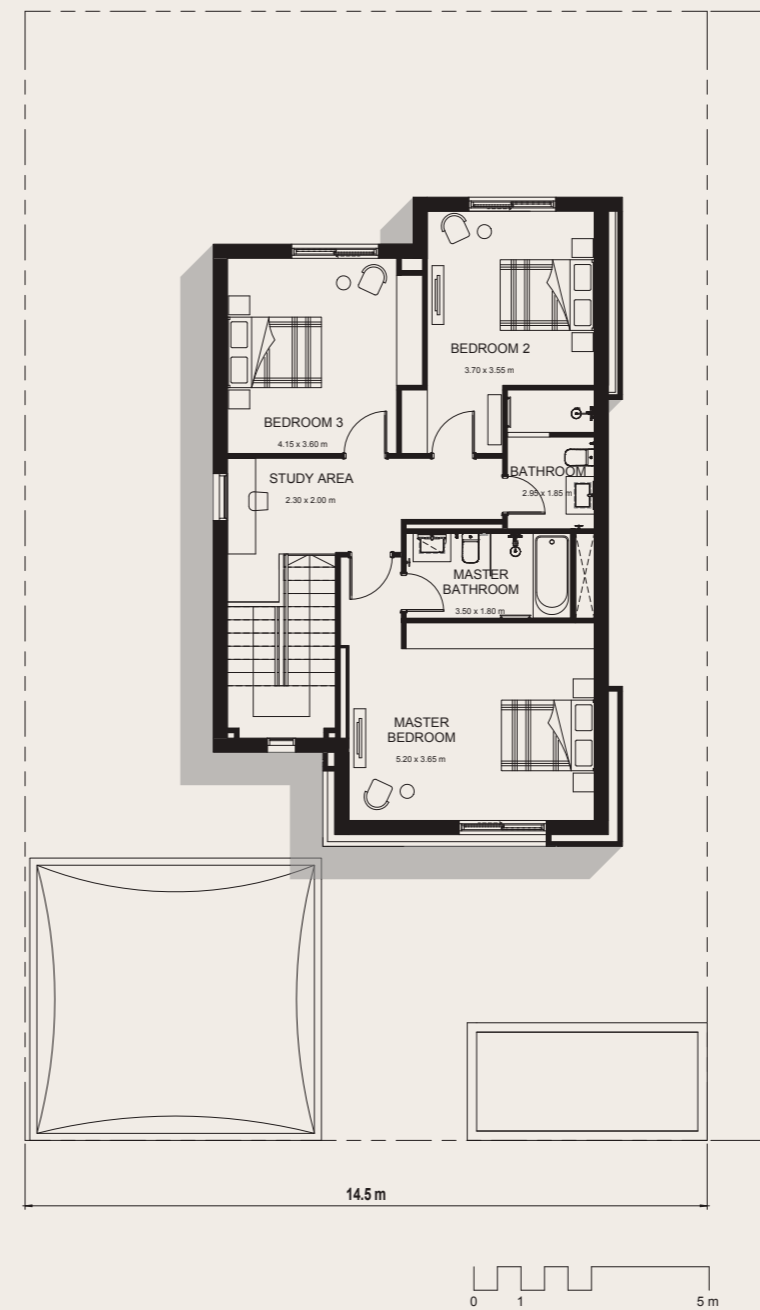
# NOYA LUMA

# 3-BED VILLA

## GROUND FLOOR PLAN



## FIRST FLOOR PLAN



AREA: **188 SQM**

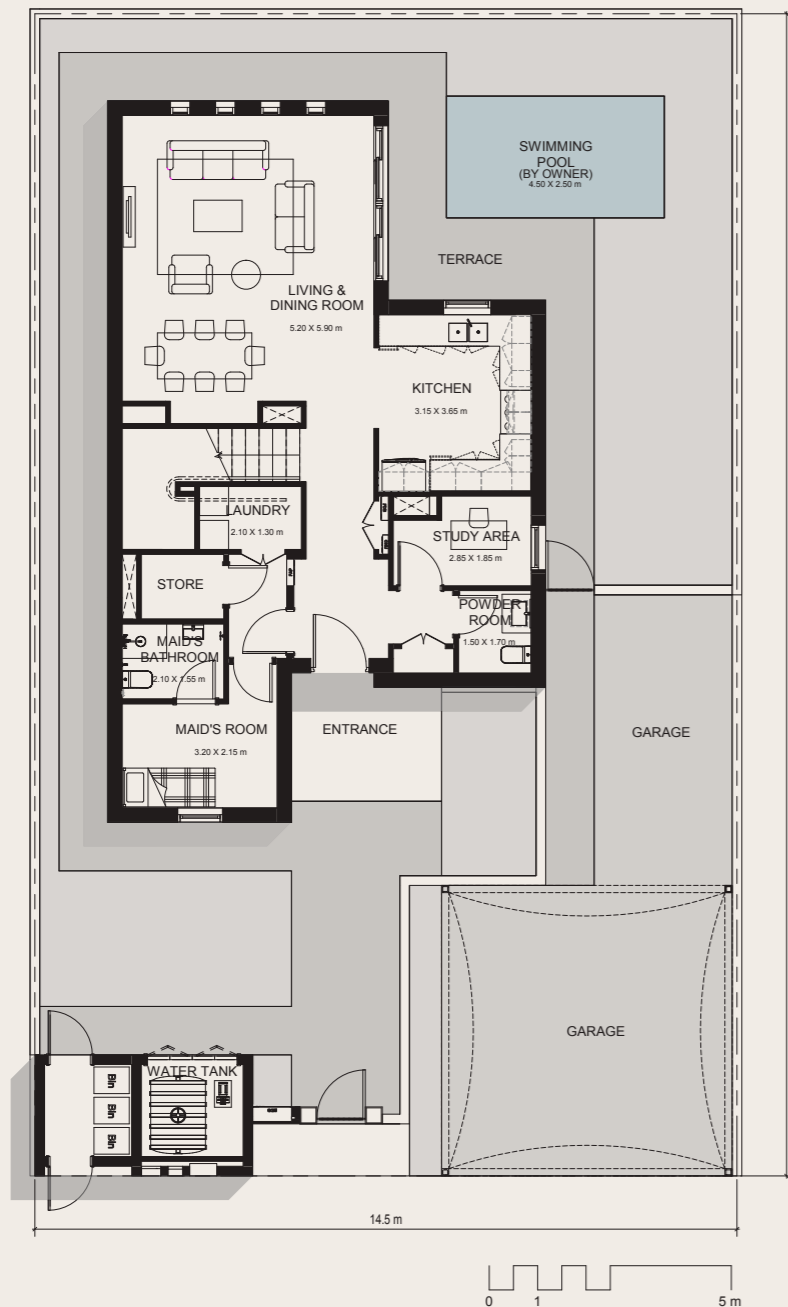
BEDROOMS: **3**

Note that this floor plan was produced prior to the completion of construction and is indicative only and not to scale. Changes may be made during the development and areas, fittings, finishes and specifications are subject to change without notice in accordance with the provision of the contract of scale. The furniture depicted is not included with any sale and should not be taken to indicate the final positions of power points, TV connections and the like. Prospective purchasers must rely on their own enquiries. Bulkheads necessary for services and structure are not depicted.

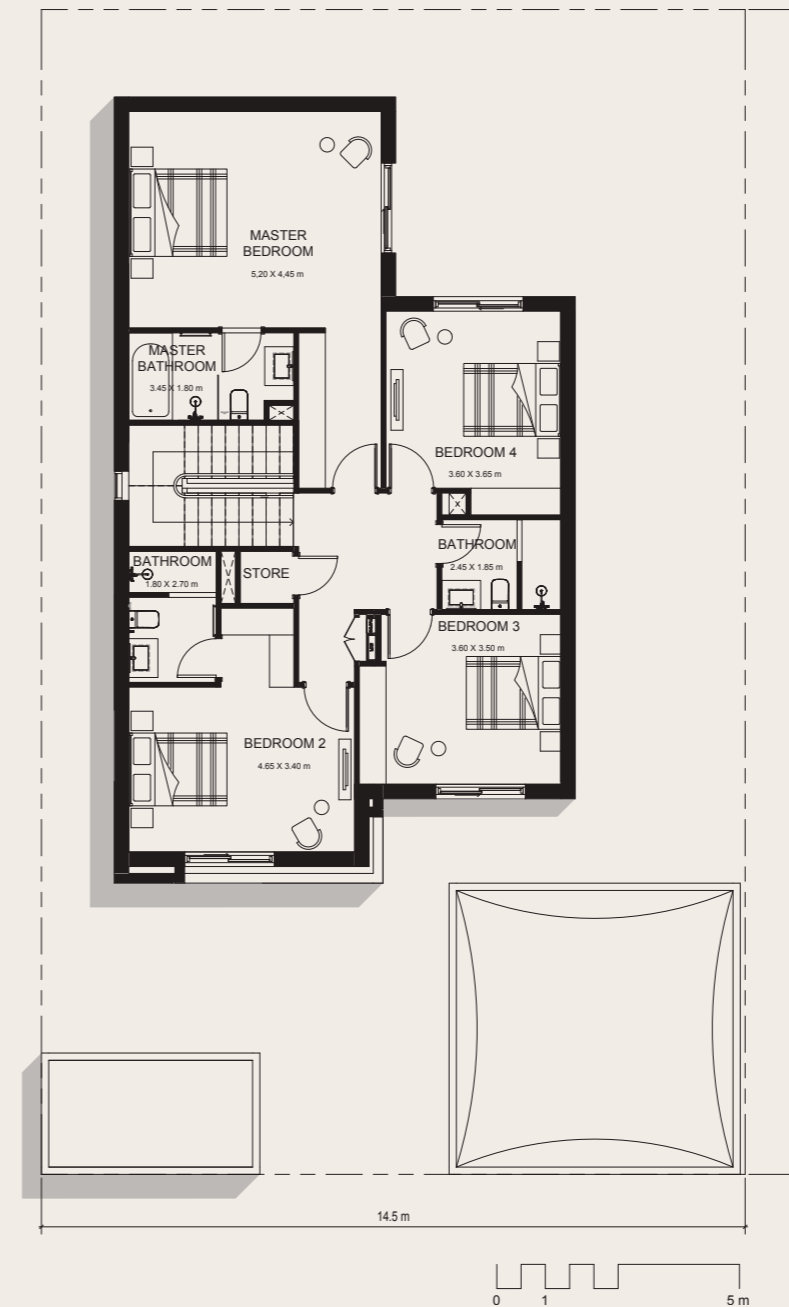
# NOYA LUMA

# 4-BED VILLA

## GROUND FLOOR PLAN



## FIRST FLOOR PLAN



AREA: **227 SQM**

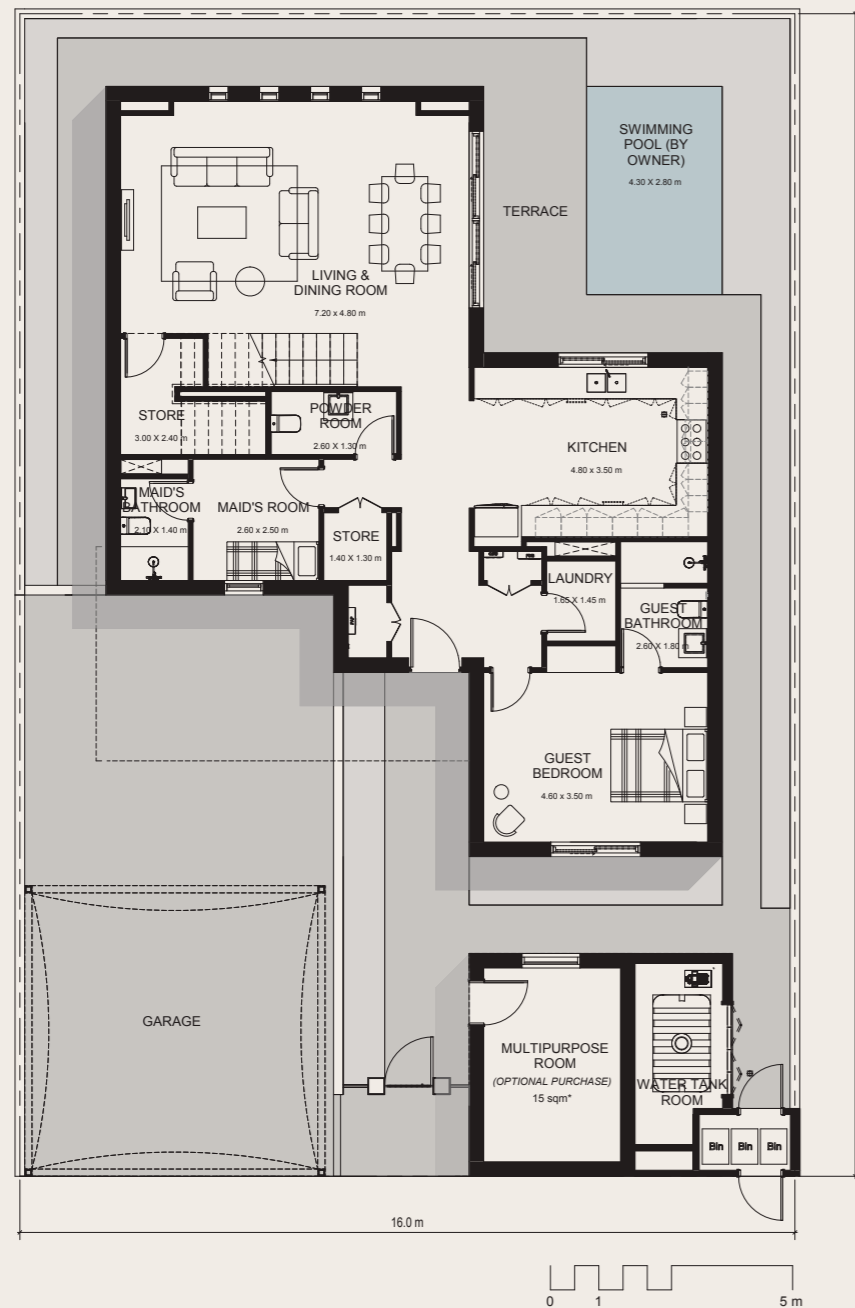
BEDROOMS: **4**

Note that this floor plan was produced prior to the completion of construction and is indicative only and not to scale. Changes may be made during the development and areas, fittings, finishes and specifications are subject to change without notice in accordance with the provision of the contract of scale. The furniture depicted is not included with any sale and should not be taken to indicate the final positions of power points, TV connections and the like. Prospective purchasers must rely on their own enquiries. Bulkheads necessary for services and structure are not depicted.

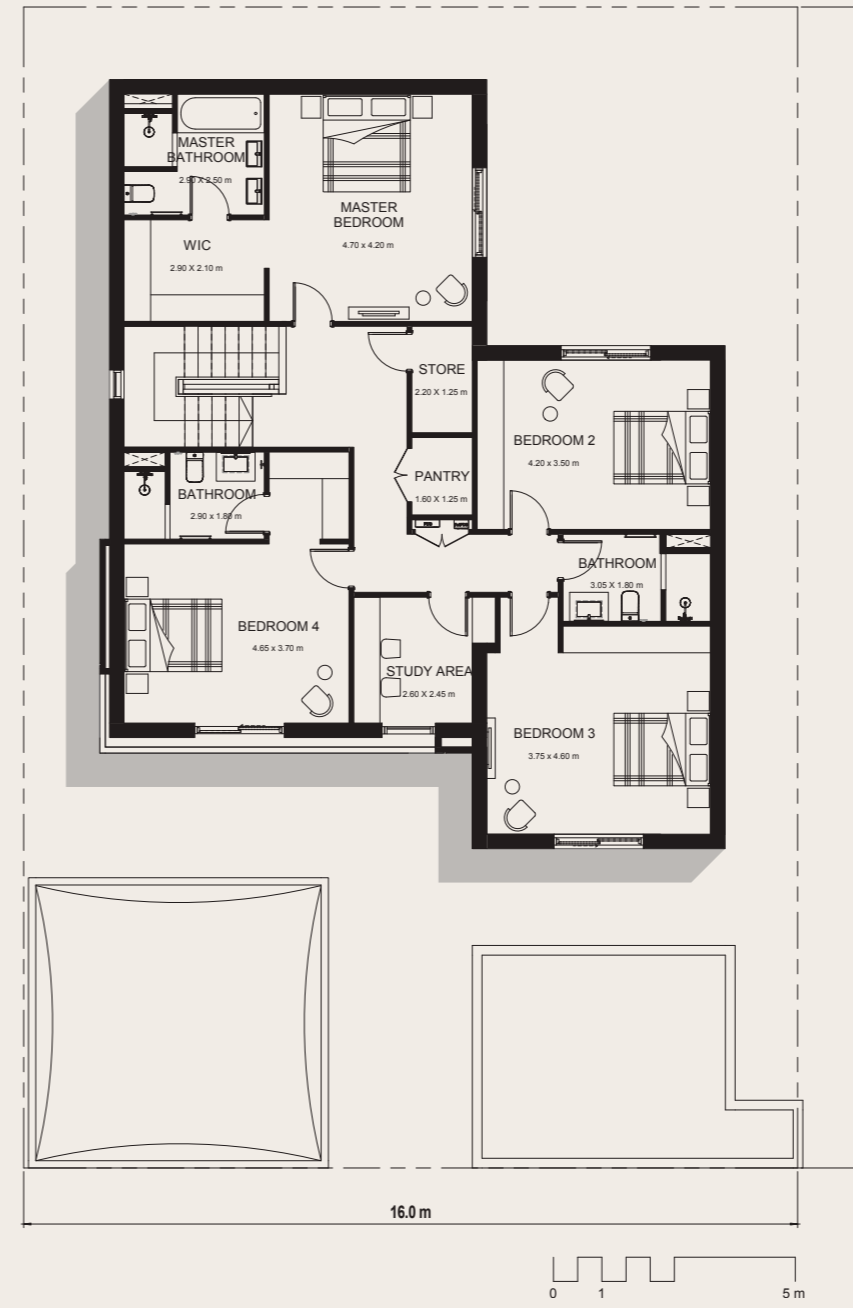
# NOYA LUMA

# 5-BED VILLA

## GROUND FLOOR PLAN



## FIRST FLOOR PLAN



AREA: **289 SQM**

BEDROOMS: **5**

Note that this floor plan was produced prior to the completion of construction and is indicative only and not to scale. Changes may be made during the development and areas, fittings, finishes and specifications are subject to change without notice in accordance with the provision of the contract of scale. The furniture depicted is not included with any sale and should not be taken to indicate the final positions of power points, TV connections and the like. Prospective purchasers must rely on their own enquiries. Bulkheads necessary for services and structure are not depicted.

\*The above area excludes the optional Multipurpose Room area (15 SQM).

TO SAADIYAT ISLAND  
20 MINUTES

TO DUBAI  
50 MINUTES

# YAS AT A GLANCE

TO DOWNTOWN ABU DHABI  
30 MINUTES

ABU DHABI  
INTERNATIONAL  
AIRPORT  
20 MINUTES

KHALIFA CITY  
20 MINUTES

