

COLLECTIVE 2.0

AT DUBAI HILLS ESTATE

EMAAR



Collective 2.0 is wholly owned by Emaar Properties PJSC and extends Emaar's success in developing master-planned prestige properties. Amongst Emaar's crowning achievements are:

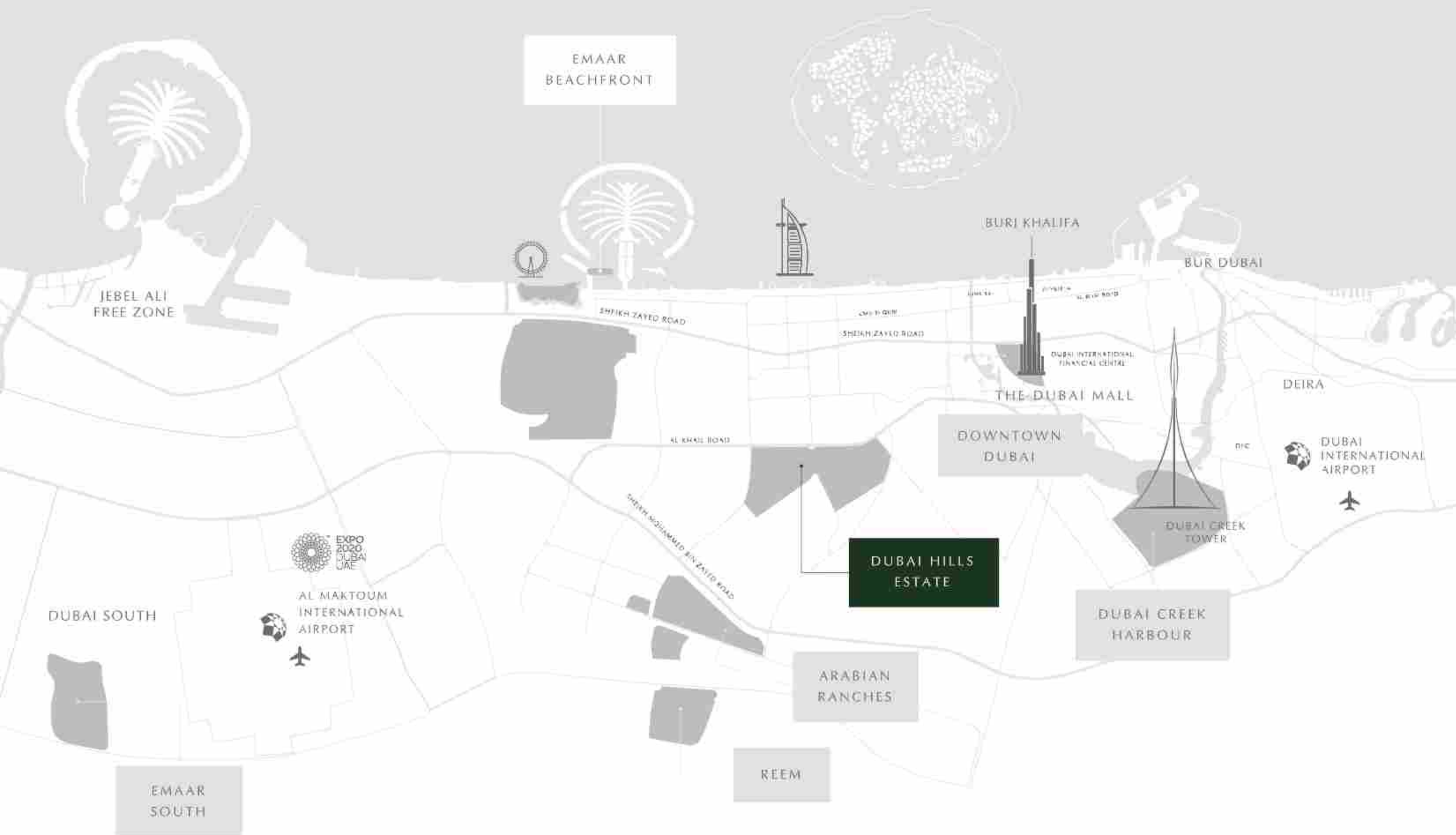
- The tallest building in the world, Burj Khalifa
- The world's most visited shopping and entertainment destination, The Dubai Mall
- The world's first Armani Hotel

DUBAI HILLS ESTATE

Discover a unique blend of elegantly-planned neighbourhoods crafted around a magnificent 18-hole championship golf course. As the largest development of its kind in the region, Dubai Hills Estate is an aspirational city within a city that will transform the way you live.

Based on studies by KPMG and American National Association of Realtors, golf course proximity can boost property value by as much as 20%.






KEY FACTS ABOUT DUBAI HILLS ESTATE


6,800,000 SQ M
GFA


220,000
Offices


1,450,000 SQ M
Parks &
Open Spaces


1,120,000 SQ M
18-Hole Golf Course,
Clubhouse & 60 Maisonnettes


20 - 25
Minutes to
Dubai Int'l Airport


20 - 25
Minutes to
Al Maktoum Airport



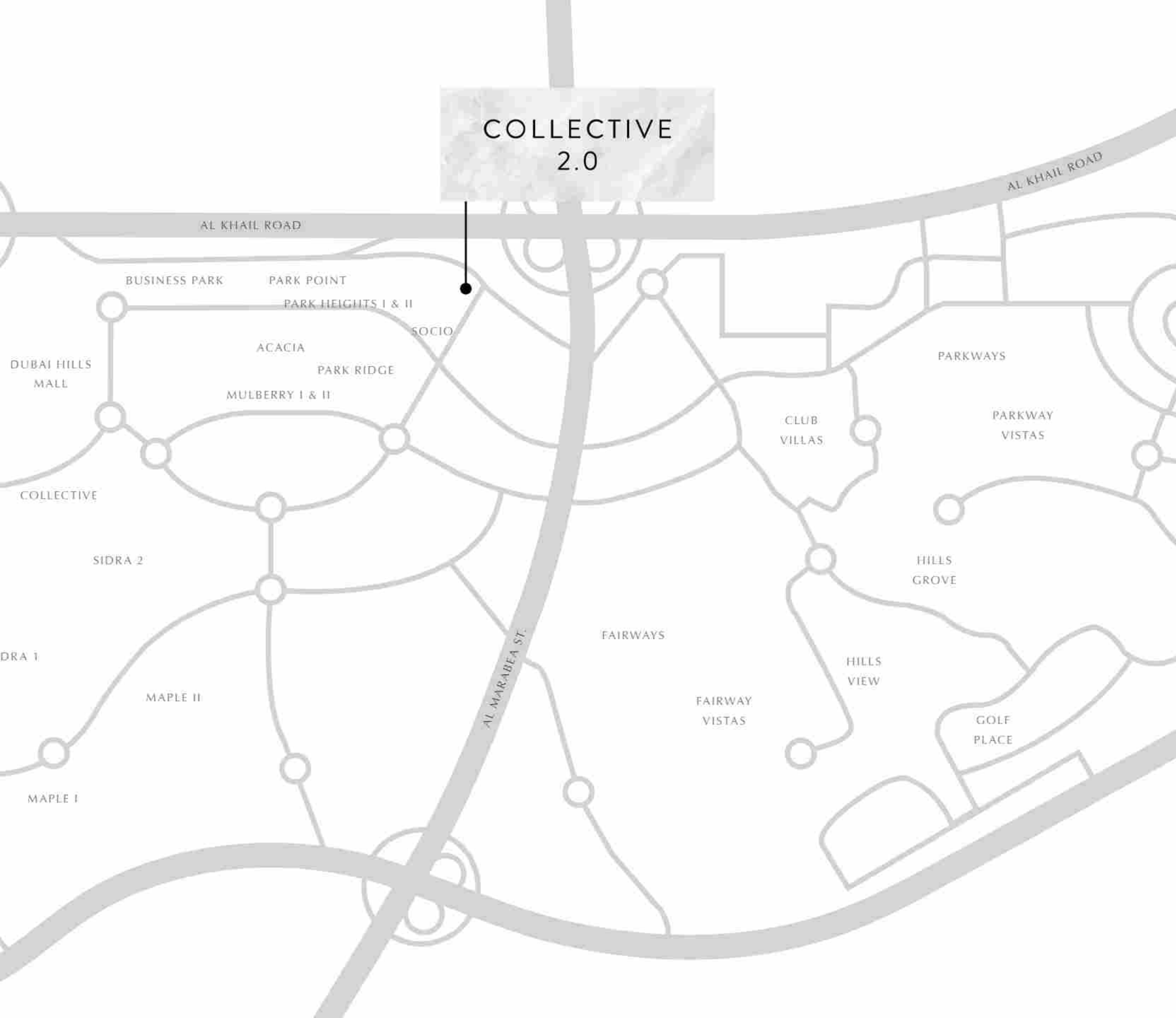
COLLECTIVE 2.0

BUILDING CONNECTIONS, BROADENING HORIZONS

One and two bedroom apartments overlooking the bustling Dubai Hills Boulevard. Following the tremendous success of Collective (460 units sold in one day), Collective 2.0 will cater to millennials of Dubai with a collaborative and social setting, extraordinary amenities and places to work, study or just hang out. Only minutes away from Dubai Hills Park and Dubai Hills Mall.



EMPOWERING
PARTICIPATION
IN LIFE
AROUND YOU



A CENTRAL BASE

Nestled alongside Rove Hotel and Business Park, which increase the property value, Collective 2.0 has the perfect location for a chic urban lifestyle. Enjoy trendy shopping venues at Dubai Hills Boulevard, meet friends at the vibrant Dubai Hills Park, or explore over 650 shopping and dining outlets at the Dubai Hills Mall. With access to Al Khail Road and the nearby metro station, Downtown Dubai is just moments away.

A SENSE OF COMMUNITY

Collective 2.0 is the ideal place for those who enjoy making friends and having an active lifestyle. From the casual atmosphere of the lobby to the informal library to the buzzing open plan area, you can hang out, lounge, read, meditate, work, drink coffee and make new friends. Rent a bike or sportswear from the lobby, then head over to the happening Dubai Hills Park.



DUBAI HILLS

BOULEVARD





DUBAI HILLS BOULEVARD

The Dubai Hills Boulevard runs along the length of Dubai Hills Estate linking key destinations such as the retail, parks, hospitals, schools and residential communities. Striking a perfect balance between timeless and contemporary design, the boulevard is brightly adorned with art installations, pop-up retail and lush flowering trees creating a comfortable shaded environment. A true urban oasis within the city, this is where the world comes to connect.

DUBAI HILLS
MALL





DUBAI HILLS MALL

Enjoy 2 million square feet of retail indulgence spread out over two floors. Set to attract visitors from far and wide, Dubai Hills Mall is home to over 650 retail and F&B outlets including entertainment outlets, a Cineplex and hypermarket.

DUBAI HILLS
PARK





DUBAI HILLS PARK

Stretching across 180,000 square metres – the size of 30 football fields, this verdant green space is your new haven in which to relax, unwind and explore activities that nourish the mind, body and soul.







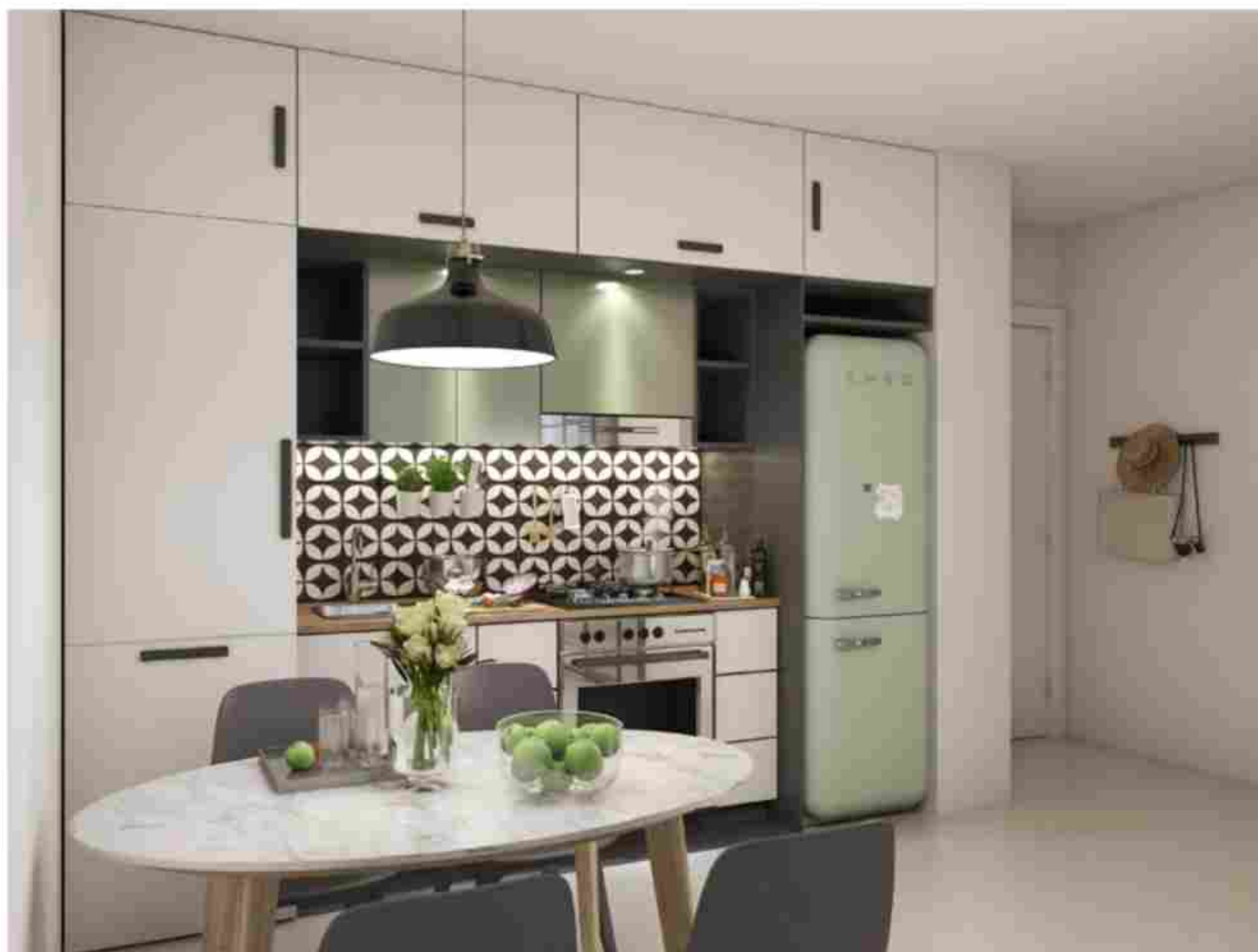
ENTRANCE

CASUAL CONCIERGE SERVICE

Reception desks are a thing of the past. Collective 2.0's reception area is designed to make you feel like you've arrived home, while the friendly Concierge is there to make both you and your guests welcome and at ease.







INTERIOR DESIGN

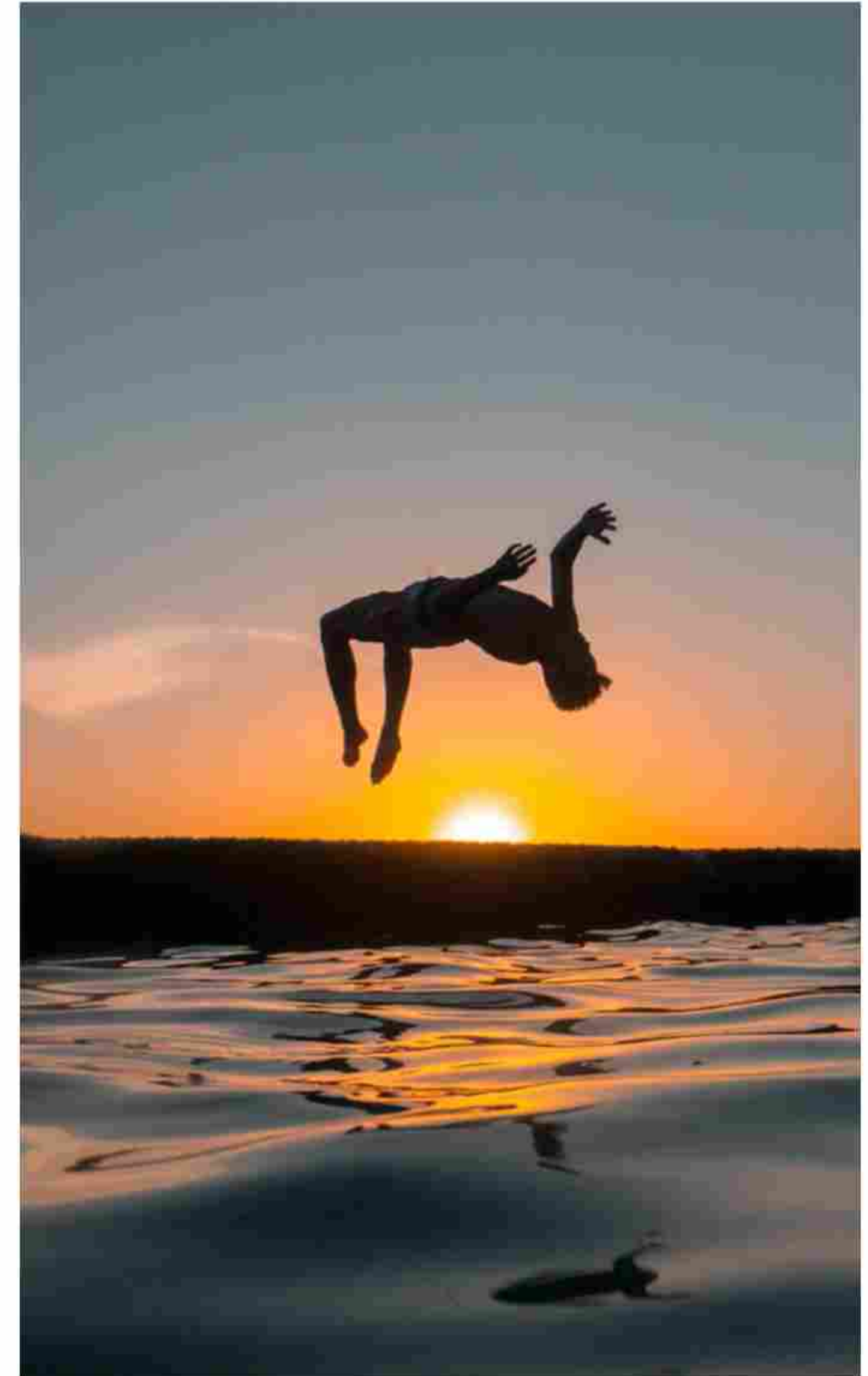
TRENDY COOL INTERIORS

Come home to a unique and inspiring setting. Collective 2.0's apartments buck the mainstream interior design trends by embracing cosy industrial chic. With partitions that allow your bedroom to spill onto the living room, enjoy plenty of space for friends, fun and laughter. Step onto your balcony and lap up the views of the Downtown Dubai skyline.



SPACES TO SPREAD YOUR WINGS

Start your day with an energising workout at one of the fully-equipped gyms. Head to the library to get some work done, then unwind at the game area, cinema room or the outdoor lounge. Take a refreshing dip in the pool, then head down to the collaborative space to catch up with your neighbours and friends.



The background of the entire image is a light-colored, marbled paper with soft, swirling patterns in shades of off-white and light grey. The texture appears organic and slightly aged.

COLLECTIVE 2.0

HAS EVERYTHING YOU NEED
TO LIVE, WORK AND GROW.

RESERVE YOUR PLACE NOW.