

An aerial photograph of a lush green golf course. The landscape is dotted with numerous palm trees and other tropical vegetation. A winding path or fairway cuts through the grass. In the upper right corner, a small, calm pond is visible. The overall scene is bright and sunny, with long shadows cast by the trees.

DUBAI HILLS ESTATE

GOLF PLACE II

EMAAR



UNPARALLELED SURROUNDINGS. UNMATCHED LIFESTYLE.

The overwhelming success of Phase I paved the way to Golf Place II – a distinguished new villa collection set amidst a truly breathtaking landscape. Find yourself amongst the lush fairways overlooking the majestic golf course and elevate your lifestyle with everyday luxury.



4, 5 AND 6- BEDROOM
VILLAS



A BROAD RANGE
OF PLOT SIZES



CLOSE PROXIMITY TO
18-HOLE CHAMPIONSHIP
GOLF COURSE



3 ARCHITECTURAL
FAÇADE STYLES
TO SELECT FROM





AL KHAİL ROAD

UMM SUQEIM ST.

DUBAI HILLS
MALL

DUBAI HILLS
PARK

KING'S COLLEGE
HOSPITAL

GEMS INTERNATIONAL
SCHOOL

DUBAI HILLS
GOLF COURSE

DUBAI HILLS
GOLF CLUB

LATIFA BINT HAMDAN STREET

AL MARABEA ST.

DUBAI HILLS
ESTATE

GOLF PLANT II

N



LOCATION

IN THE CENTRE OF THE ACTION



5 MINS DRIVE TO
DUBAI HILLS MALL



5 MINS DRIVE TO
DUBAI HILLS PARK



EASY ACCESS TO
AL MARABEA STREET



SHORT DRIVE TO
DUBAI HILLS GOLF CLUB



20 MINUTES DRIVE TO
DOWNTOWN DUBAI

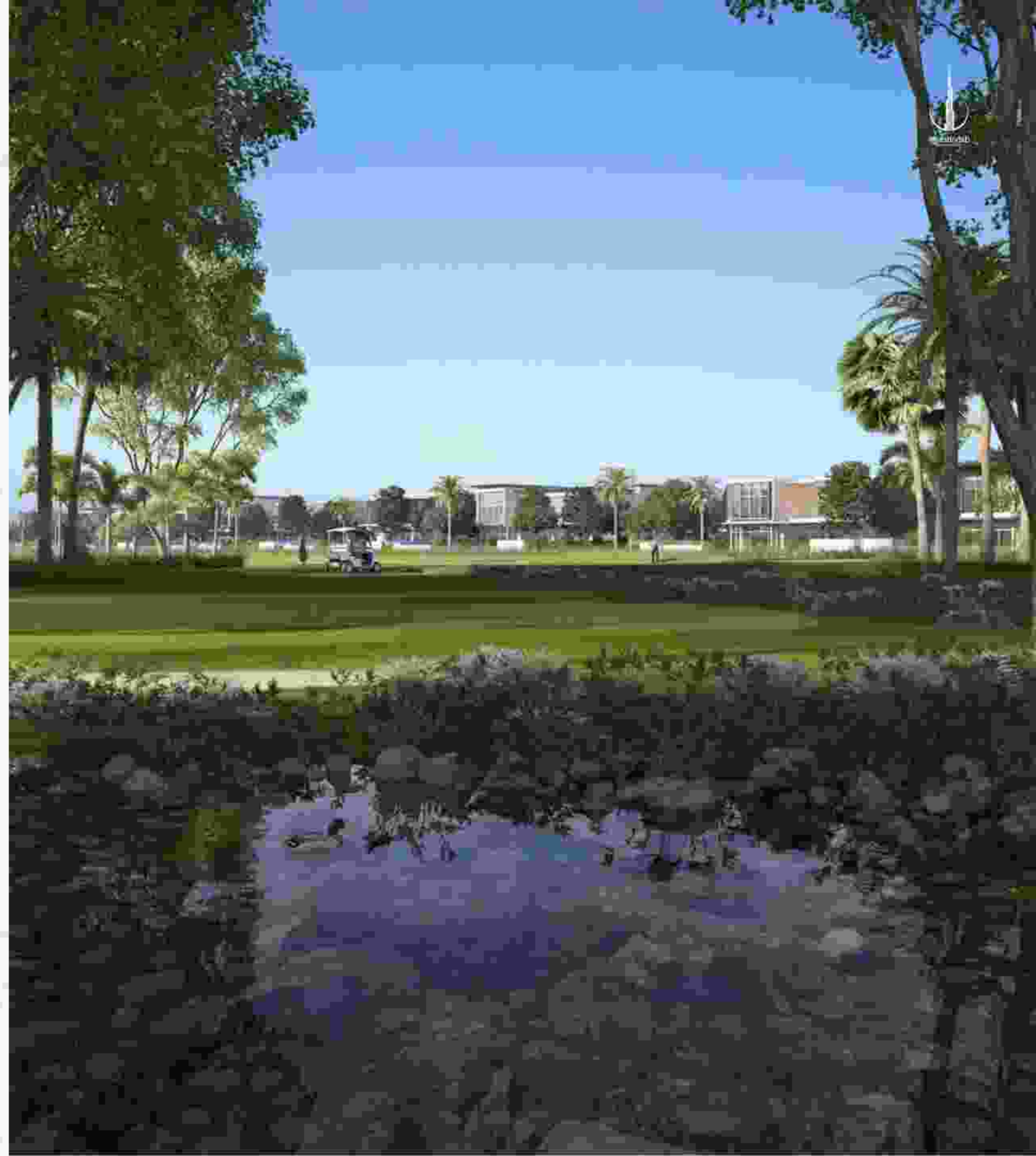


25 MINUTES DRIVE TO
DUBAI INTERNATIONAL
AIRPORT

VIEWS

MEET YOUR SERENE SPACE

Take in the majestic views of the golf course from the comfort of your elegant home. Let the lush landscapes connect you with nature, as you take an evening stroll through the neighbourhood with your loved ones.



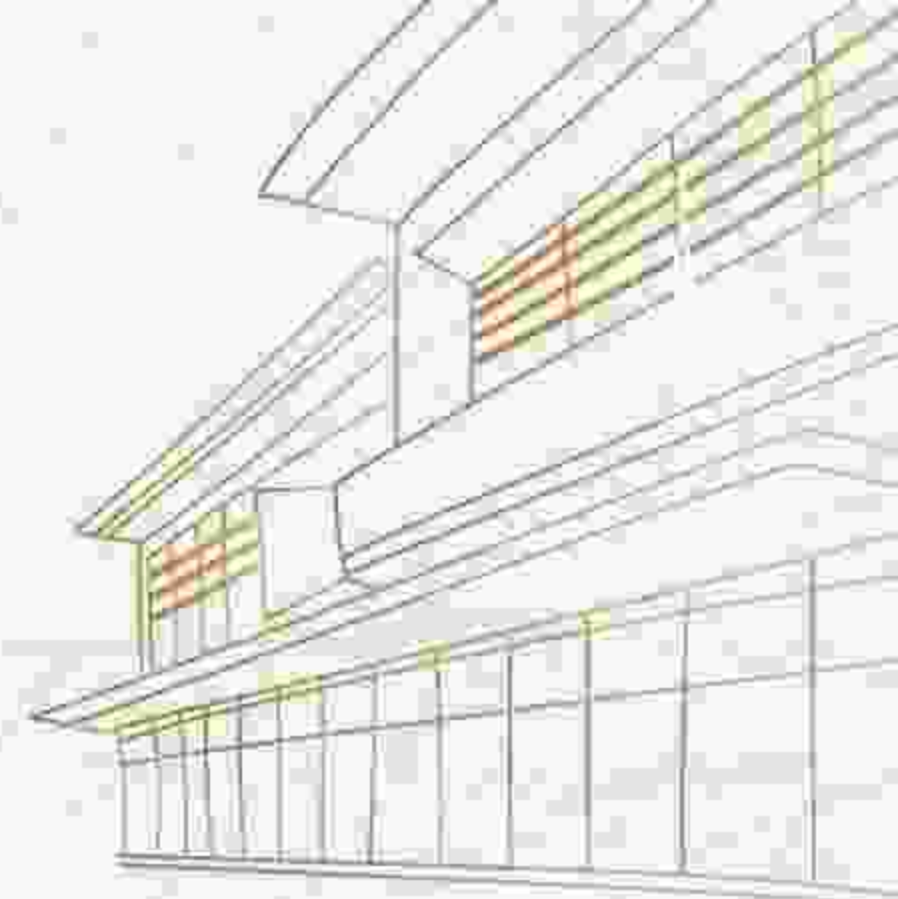


STELLAR GOLF COURSE VIEWS



ELEVATE YOUR
EVERYDAY WITH
NATURE





LUXURIOUS AESTHETICS MEETS WHOLESOME FAMILY LIVING

Golf Place II will offer a selection of 4, 5 and 6 bedroom luxury residences in 3 architectural styles catering to different palates.

Each villa boasts a generous private terrace and floor-to-ceiling windows that usher in all the shades of green into your home.



CONTEMPORARY STYLE



Where excellent proportions, clever use of panoramic windows and exquisite architectural details unite to create a strong contemporary identity



MODERN STYLE

Where the simplicity of modern architecture blends with sleek façade details and large sliding windows, creating an effortless flow between the indoor living and outdoor areas.



ELEGANT STYLE



A modern villa that boasts clean lines and expansive windows tied together with strikingly bold features and material palette.



DUBAI HILLS ESTATE



GOLF PLACE II



AMENITIES

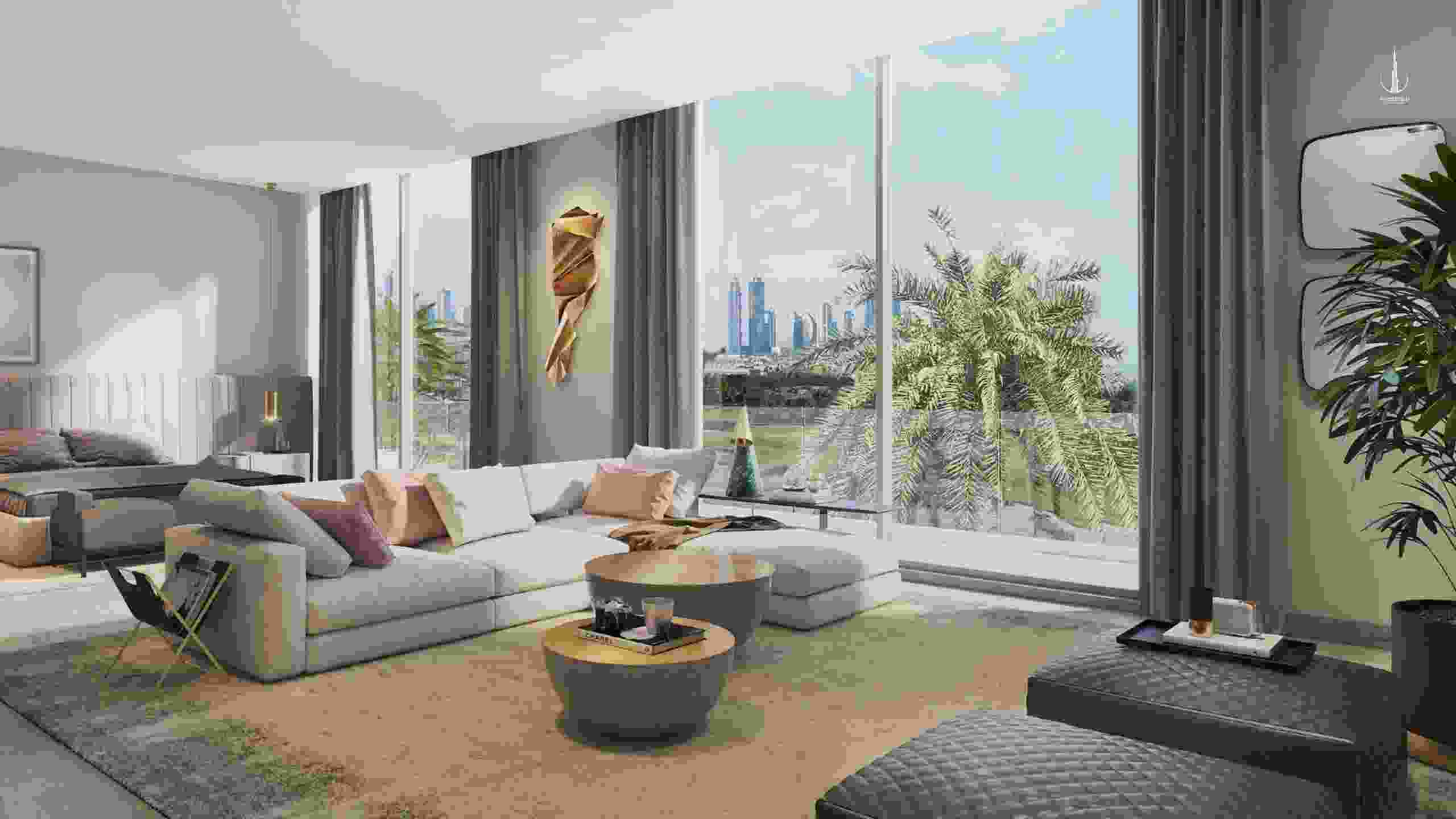
- | | | | |
|-------------|-------------------|-------------------------|-----------------|
| 1 LAWN AREA | 4 PICNIC AREA | 7 BASKETBALL HALF COURT | 10 TENNIS COURT |
| 2 PETANQUE | 5 FITNESS TRACK | 8 TABLE TENNIS | 11 MOSQUE |
| 3 PLAY AREA | 6 OUTDOOR FITNESS | 9 VOLLEY BALL | |

VILLA TYPE

- ◆ CONTEMPORARY
- ◆ ELEGANT
- ◆ MODERN

FLOOR PLAN TYPE

- | | | |
|---|---|---|
| ◆ B2 | ◆ D1 | ◆ D3 |
| ◆ B3 | ◆ D2 | ◆ D4 |





WORLD-CLASS AMENITIES

Take your game to the next level with Golf Place II's world-class amenities. Give your regular workout an upgrade with various sports facilities, each designed to uplift your fitness experience.



PETANQUE



PLAY AREA



BASKETBALL



FITNESS TRACK



TENNIS COURT



VOLLEY BALL









THE PERFECT BALANCE OF FAMILY & SPORTING LIFESTYLES

The luxury villa community Golf Place is every modern homeowner's dream realized. With sprawling villas exuding elegance and comfort, as well as an 18-hole championship golf course at your doorstep, it's the perfect amalgam of trendsetting, family, and sporting lifestyles.

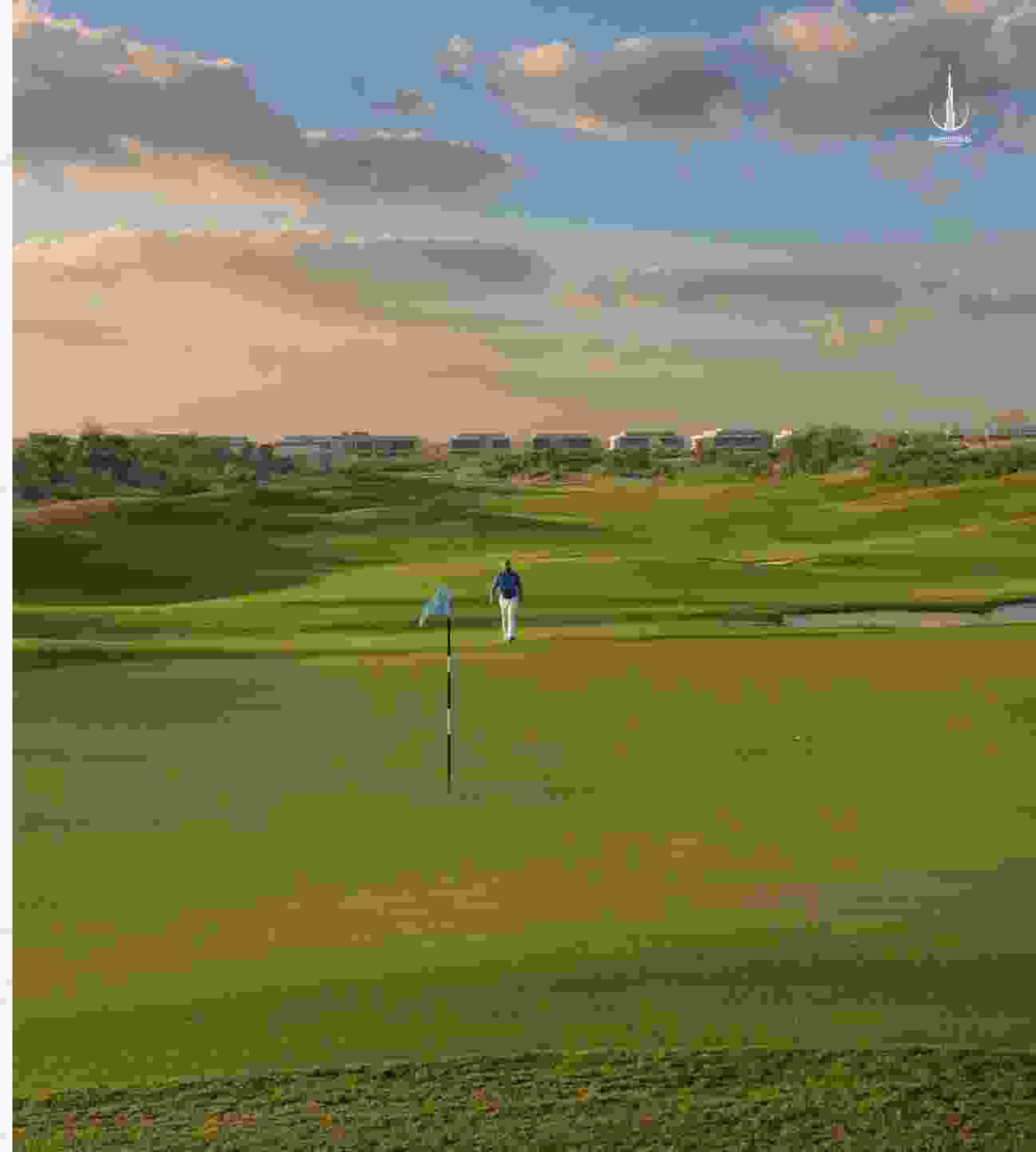
SURRENDER TO THE COUNTRY CLUB LIFESTYLE



YOUR GREATEST ROUND OF GOLF, AT YOUR DOORSTEP

Dubai Hills Golf Club encompasses 1.2 million sqm of meticulously manicured fairways (the size of 63 football fields). Set against the backdrop of Burj Khalifa and Downtown Dubai, with a glorious outward nine, the fully-functional golf course is bound to inspire your peak performance.

DESIGNED BY EUROPEAN GOLF DESIGN	OPERATED BY TROON GOLF	A HOST OF DINING OPTIONS
83 STRATEGICALLY PLACED BUNKERS	GOLF ACADEMY & PRACTICE FACILITIES	ICONIC CLUBHOUSE





2 MILLION SQ FT OF RETAIL INDULGENCE

Dubai Hills Mall is a destination of endless possibilities. Ideally positioned on the crossroads of Umm Suqeim Road and Al Khail Road, and only a short drive from GOLF PLACE II, the mall grants you:



650+ SHOPPING &
DINNING CHOICES



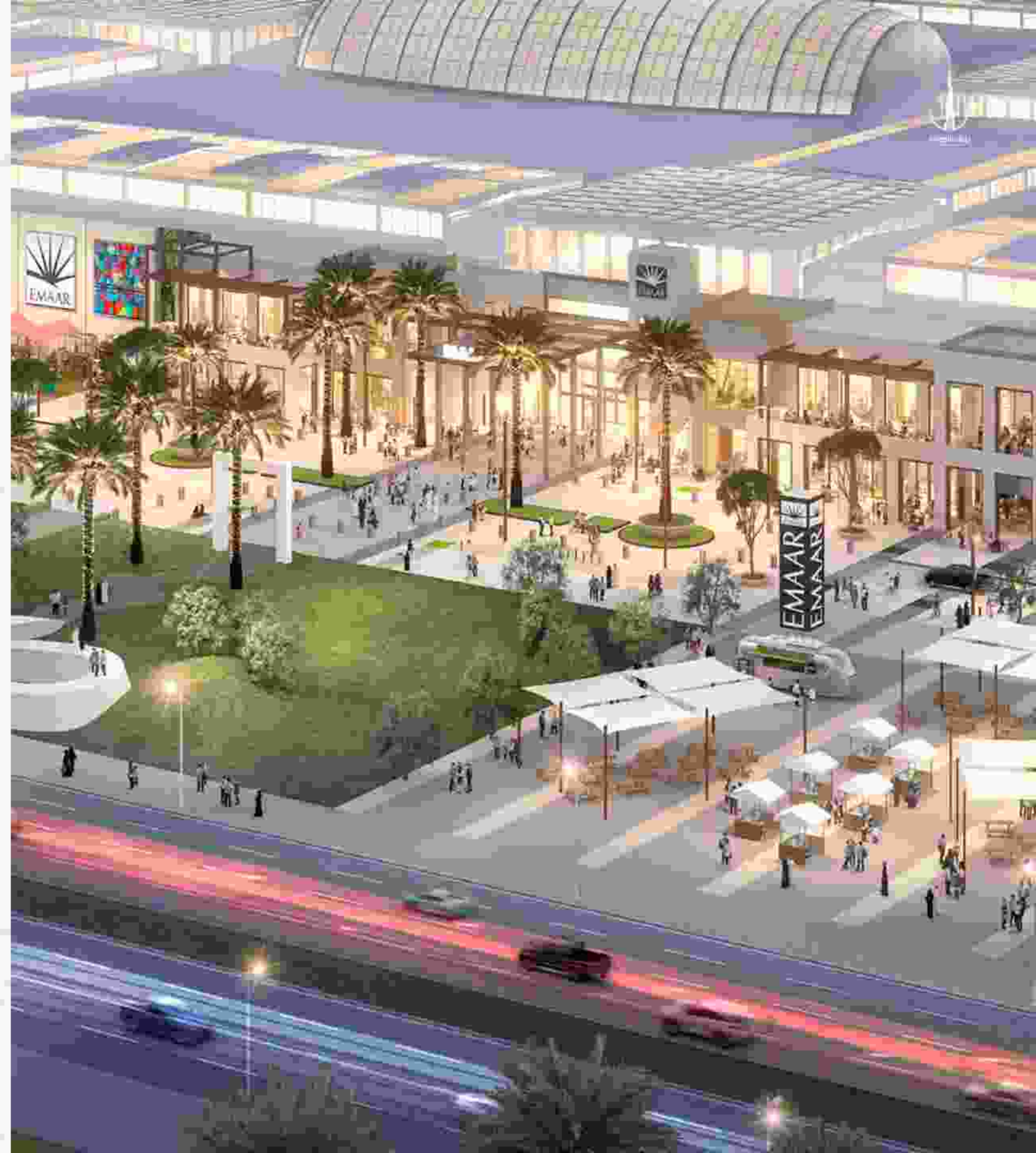
A HOST OF
DINING OPTIONS



83 STRATEGICALLY
PLACED BUNKERS



ICONIC
CLUBHOUSE





DUBAI HILLS PARK

YOUR NEW URBAN HEAVEN

Spanning an impressive 180,000 sqm, Dubai Hills Park is the largest residential community park in Dubai packed with 19 exhilarating activities for you and your loved ones. These include:



2.5 KM
JOGGING TRACK



WEEKEND
MARKETS



CAFÉ
PAVILION



SKATE &
BOUNCE PARK



URBAN BEACH
& SPLASH PARK



DOG
PARK

THE GREEN HEART OF DUBAI

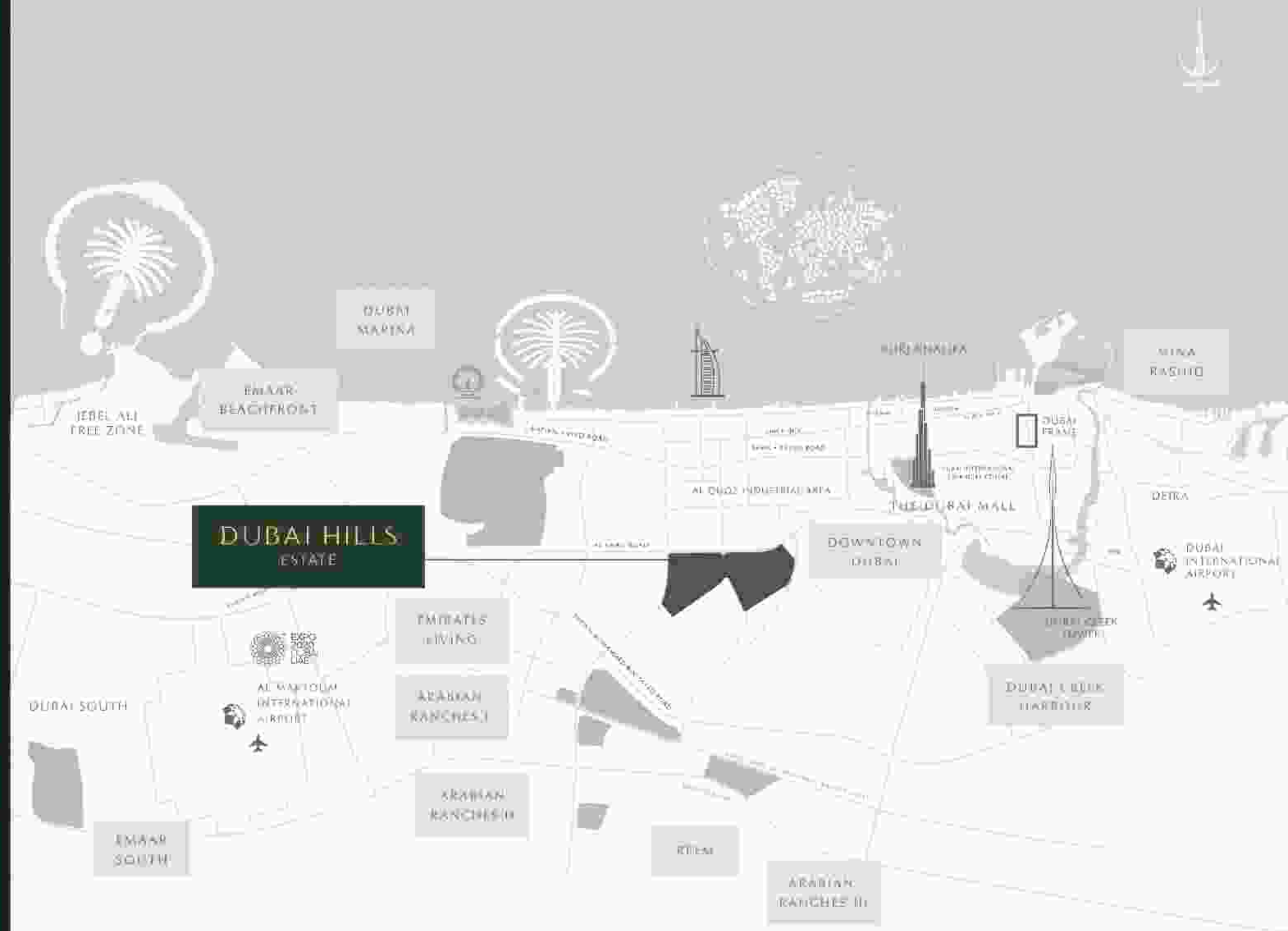
Ordinary has no home at Dubai Hills Estate. Surrounded by pristine fairways and lush gardens with stunning views of the Burj Khalifa, your new address is a masterfully-planned oasis.



20 MINS* DRIVE TO DOWNTOWN
DUBAI AND DUBAI MARINA



EASY ACCESS TO LATIFA BINT
HAMDAN STREET



PERFECTLY CONNECTED

The construction of new bridges and roads leading to Dubai Hills Park is on track by the RTA in coordination with Emaar Properties.



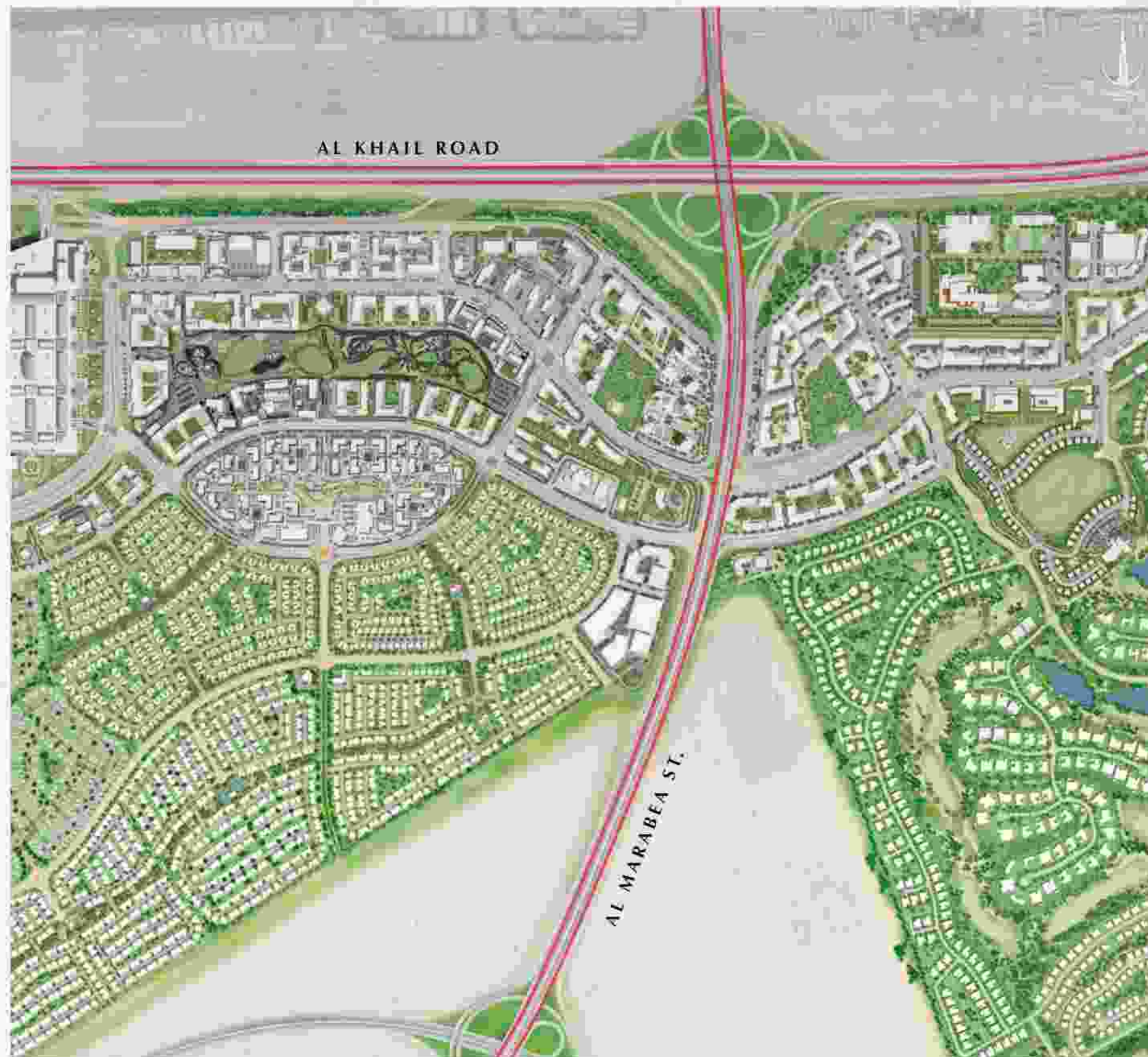
EASY ACCESS TO
AL KHAIL ROAD



EASY ACCESS TO AL
MARABEA ST.



2 PROPOSED METRO
LINES





DUBAI HILLS ESTATE

WELCOMED OUR FIRST RESIDENTS IN 2019

The first residents of Dubai Hills Estate have already moved in and they can enjoy a range of amenities already opened or soon-to-be available.

OPEN TO PUBLIC



2018

18-HOLE GOLF COURSE



2019

BUSINESS PARK



2019

DUBAI HILLS PARK



2020

DUBAI HILLS MALL

For more information on

GOLF PLACE II at DUBAI HILLS STATE,

please call Sofiene Haddad

+971503390477

DUBAI

Emaar Sales Centre, Downtown Dubai

9:30 AM to 10 PM, Saturday - Friday

Dubai Hills Estate Sales Pavilion, Umm Suqeim Road

Dubai Creek Harbour Sales Pavilion, Ras Al Khor

9:30 AM to 7 PM Saturday - Thursday | Friday from 2 PM to 7 PM

EMAAR