





## AL LILAC 3 BEDROOM TOWNHOUSE - STANDARD

The ideal option for growing families.

The 3 bedroom Townhouse Standard combines the open plan living spaces which are directly connected to the backyard, with the partially enclosed kitchen, a maid's room, a powder room on the ground floor and a two-car pergola carport.



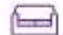




1. Master bedroom 2. Exterior rear view 3. Exterior front view





GROUND AND FIRST FLOOR PLANS - CORNER UNIT

3  3.5  1  1  2 

GROUND FLOOR



FIRST FLOOR



	m <sup>2</sup>
Ground Floor	64.7
First Floor	72.3
Balcony	4.4
Carport	27.7
Total Built Up Area	169.1

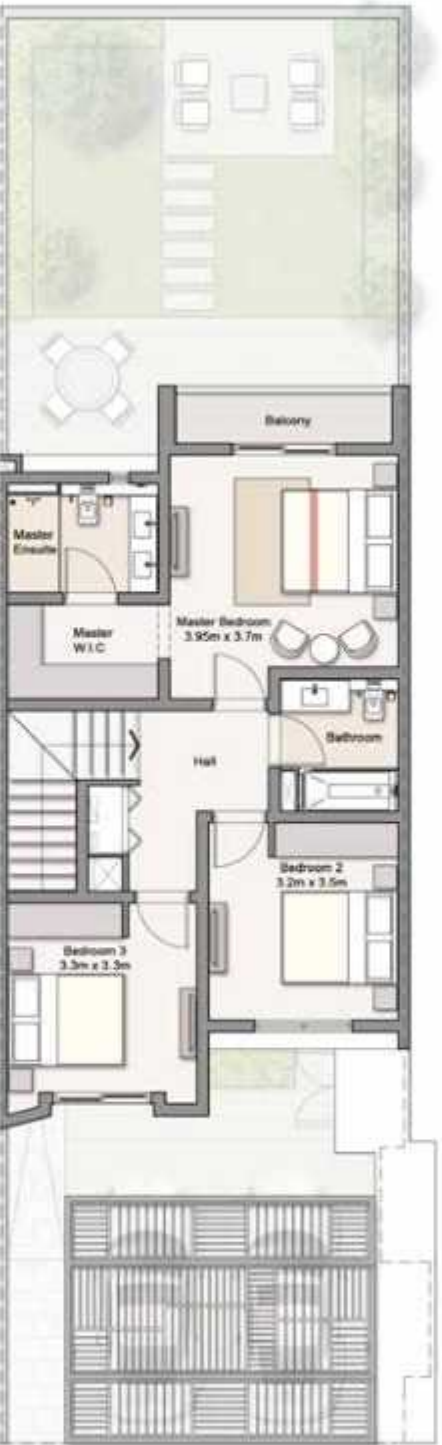
GROUND AND FIRST FLOOR PLANS - MIDDLE UNIT

3  3.5  1  1  2 

GROUND FLOOR



FIRST FLOOR



	m <sup>2</sup>
Ground Floor	66.6
First Floor	72.5
Balcony	4.2
Carport	27.8
Total Built Up Area	171.1





**Beige Scheme** 1. Living and dining room 2. Kitchen  
3. Family living room  
All homes are available in either the grey scheme or the beige scheme  
based on customer preference.



## AL LILAC 3 BEDROOM TOWNHOUSE - PREMIUM

An upscale place to call your very own.

Combining the open plan living spaces with the partially enclosed amenities, the Premium Townhouse features a backyard garden, three bedrooms and a family lounge, as well as spacious balconies and a two-car pergola carport.






1. Living room 2. Exterior rear view 3. Exterior front view





GROUND AND FIRST FLOOR PLANS - CORNER UNIT

3  3.5  2  1  2 



GROUND FLOOR



FIRST FLOOR

	m <sup>2</sup>
Ground Floor	84.8
First Floor	101.8
Balcony	2.2
Carport	32
Total Built Up Area	220.8

GROUND AND FIRST FLOOR PLANS - MIDDLE UNIT

3 3.5 2 1 2

GROUND FLOOR



FIRST FLOOR



	m <sup>2</sup>
Ground Floor	83.8
First Floor	99.6
Balcony	2.2
Carport	32.3
Total Built Up Area	217.9





1.



2.



3.



4.

**Grey Scheme** 1. Living room 2. Kitchen 3. Family room 4. Master bedroom  
All homes are available in either the grey scheme or the beige scheme based on customer preference.



## AL LILAC 3 BEDROOM COURTYARD VILLA

These unique homes are inspired by a private internal courtyard.

The main entrance, as well as the living and dining spaces, all boast stunning views and access to the private courtyard, with extensive glazing around the circulation and living spaces to extend the space visually.



1. Family living room 2. Exterior side view 3. Exterior front view





GROUND AND FIRST FLOOR PLANS – STAND ALONE

3  3.5  2  1  2 



GROUND FLOOR



FIRST FLOOR

	m <sup>2</sup>
Ground Floor	105.4
First Floor	125.4
Balcony	11.4
Carport	40.3
Total Built Up Area	282.5





**Beige Scheme** 1. Living room 2. Kitchen  
3. Family bathroom 4. Master bedroom  
All homes are available in either the grey scheme or the beige scheme based on customer preference.



## AL LILAC 4 BEDROOM SEMI DETACHED VILLA

More space for more  
quality experiences.

The 4 Bedroom Semi-Detached Villa has been configured with privacy in mind to provide a sense of spaciousness

The kitchen and service spaces are located towards the front, while the guest bedroom and powder room are located closer to the entrance. All bedrooms on the first floor feature balconies, ample wardrobe space, a large walk-in wardrobe, and en suite for the master bedroom. A two-car garage is provided with the service zone located adjacent for ease of access.








1. Living room 2. Exterior rear view 3. Exterior front view





GROUND AND FIRST FLOOR PLANS

4  4  2  3  2 

GROUND FLOOR

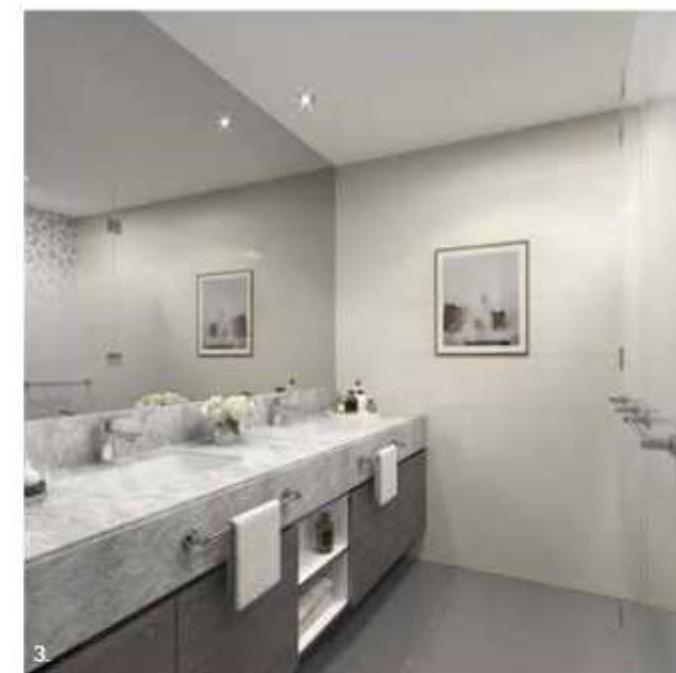


FIRST FLOOR



	m <sup>2</sup>
Ground Floor	108.8
First Floor	105.4
Balcony	18.4
Carport	34.3
Total Built Up Area	266.9





**Grey Scheme** 1. Dining room 2. Kitchen 3. Family bathroom 4. Master bedroom  
All homes are available in either the grey scheme or the beige scheme based on customer preference.



## AL LILAC 4 BEDROOM VILLA

The 4 Bedroom Villas utilises the entire space of its plot to create a stunning home.

With maximum privacy as a design priority, these villas have been planned to enhance the sense of spaciousness. Beautiful Mondrian windows accent the entrance. Each of the four bedrooms features ample wardrobes, as well as spacious balconies. All interior finishes and materials have been selected to reflect a new level of luxury.








1. Family living room 2. Exterior rear view 3. Exterior front view





GROUND AND FIRST FLOOR PLANS

4  4  2  3  2 

GROUND FLOOR



FIRST FLOOR



	m <sup>2</sup>
Ground Floor	143.8
First Floor	128.1
Balcony	16
Carport	40.9
Total Built Up Area	328.8





**Beige Scheme** 1. Living room 2. Kitchen 3. Master bathroom 4. Master bedroom  
All homes are available in either the grey scheme or the beige scheme based on customer preference.





## AL LILAC 5 BEDROOM VILLA

The 5 Bedroom Villas enhance the sense of grandeur and hospitality.

With amenities that complement a life of luxury and style, from the front elevation with signature Mondrian window to a double volume entrance space. Every aesthetic of the layouts create a sense of welcome.



1. Master bedroom 2. Exterior rear view 3. Exterior front view





GROUND AND FIRST FLOOR PLANS

5  5.5  3  2  3 

GROUND FLOOR



FIRST FLOOR



	m <sup>2</sup>
Ground Floor	182.7
First Floor	195.5
Balcony	7.2
Carport	40.5
Total Built Up Area	425.9