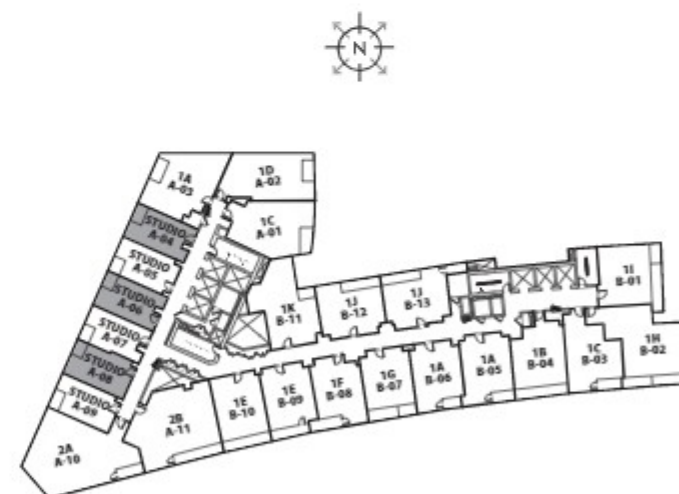
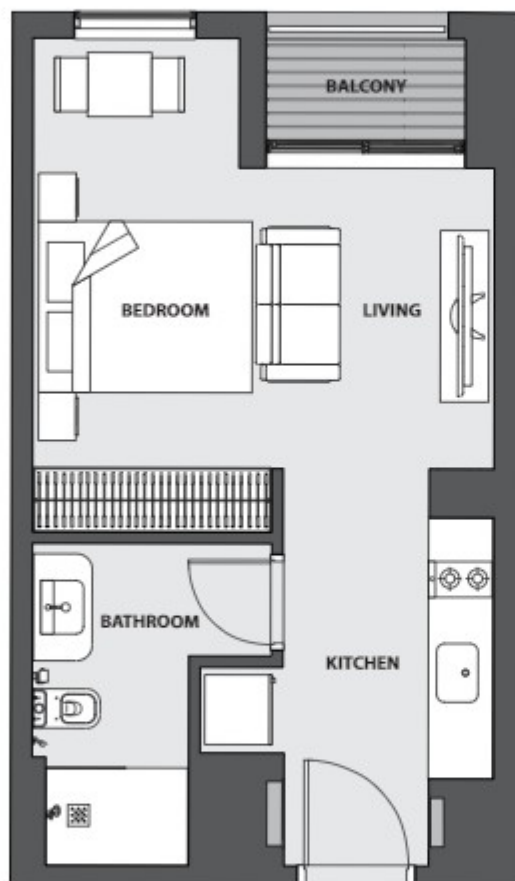


15 NORTHSIDE Floor Plans - Tower A



Creek View

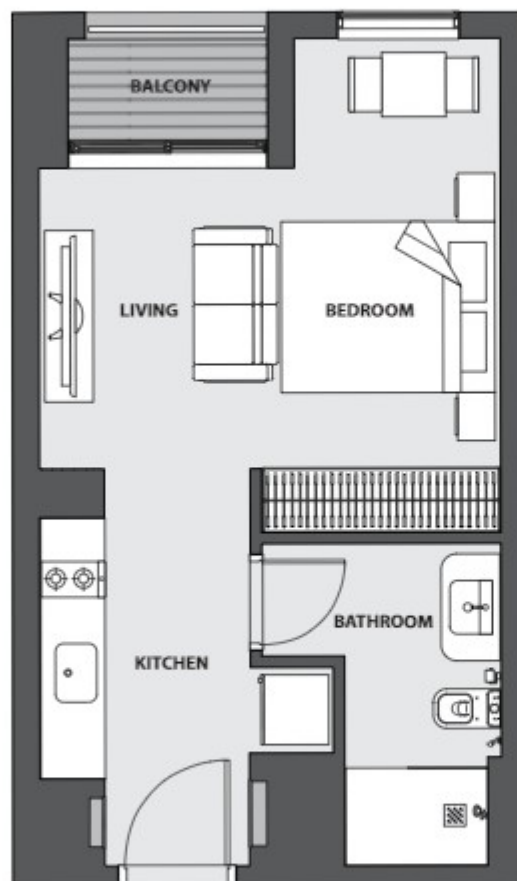
Meydan View



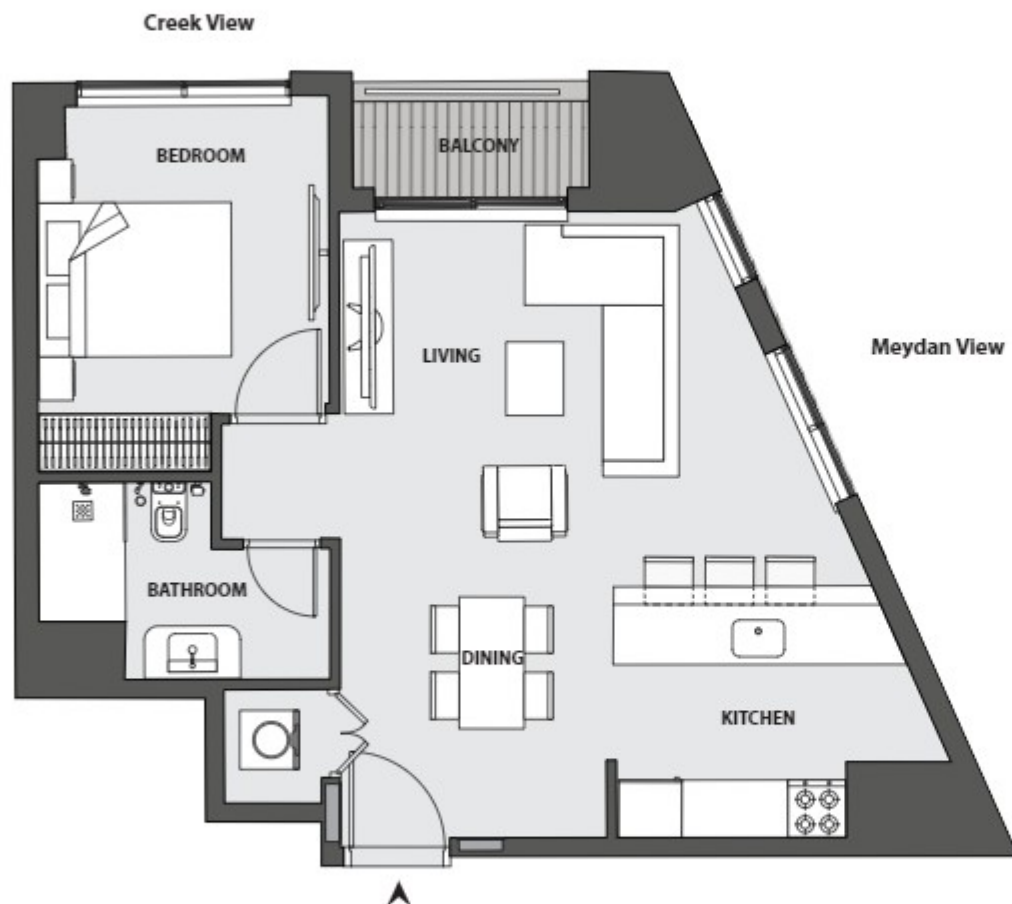
Apartment Area	32.90 m ²	354.13 ft ²
Balcony Area	2.34 m ²	25.19 ft ²
Total Area	35.24 m²	379.32 ft²

Creek View

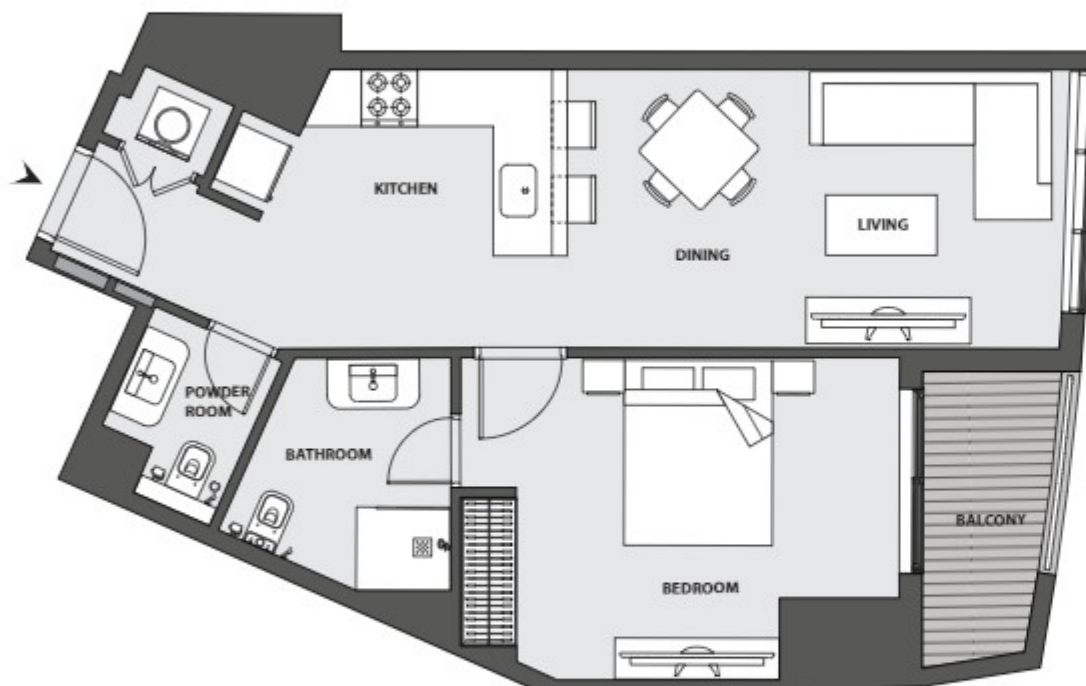
Meydan View



Apartment Area	32.90 m ²	354.13 ft ²
Balcony Area	2.34 m ²	25.19 ft ²
Total Area	35.24 m²	379.32 ft²



Apartment Area	58.41 m ²	628.72 ft ²
Balcony Area	3.15 m ²	33.91 ft ²
Total Area	61.56 m²	662.63 ft²



Dubai Canal View



Apartment Area	60.76 m ²	654.01 ft ²
Balcony Area	5.00 m ²	53.82 ft ²
Total Area	65.76 m²	707.83 ft²

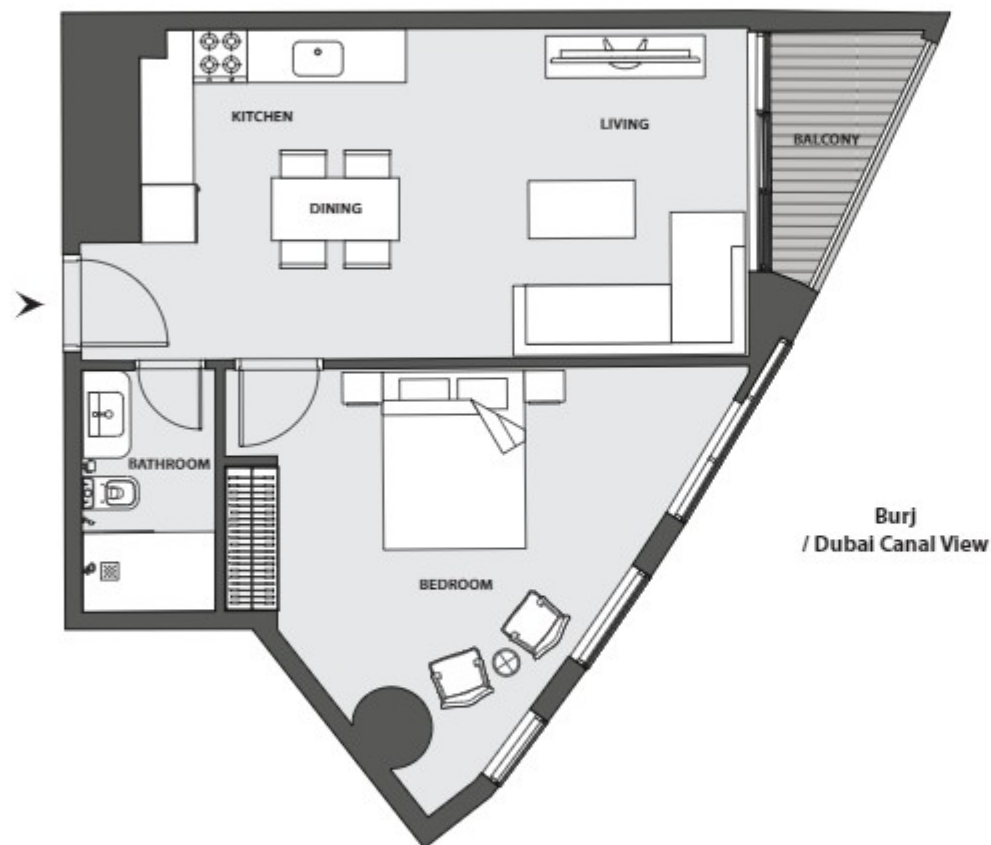
Meydan View



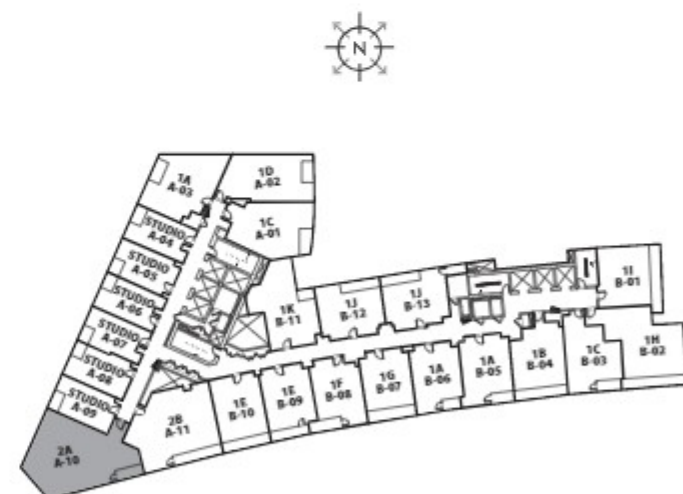
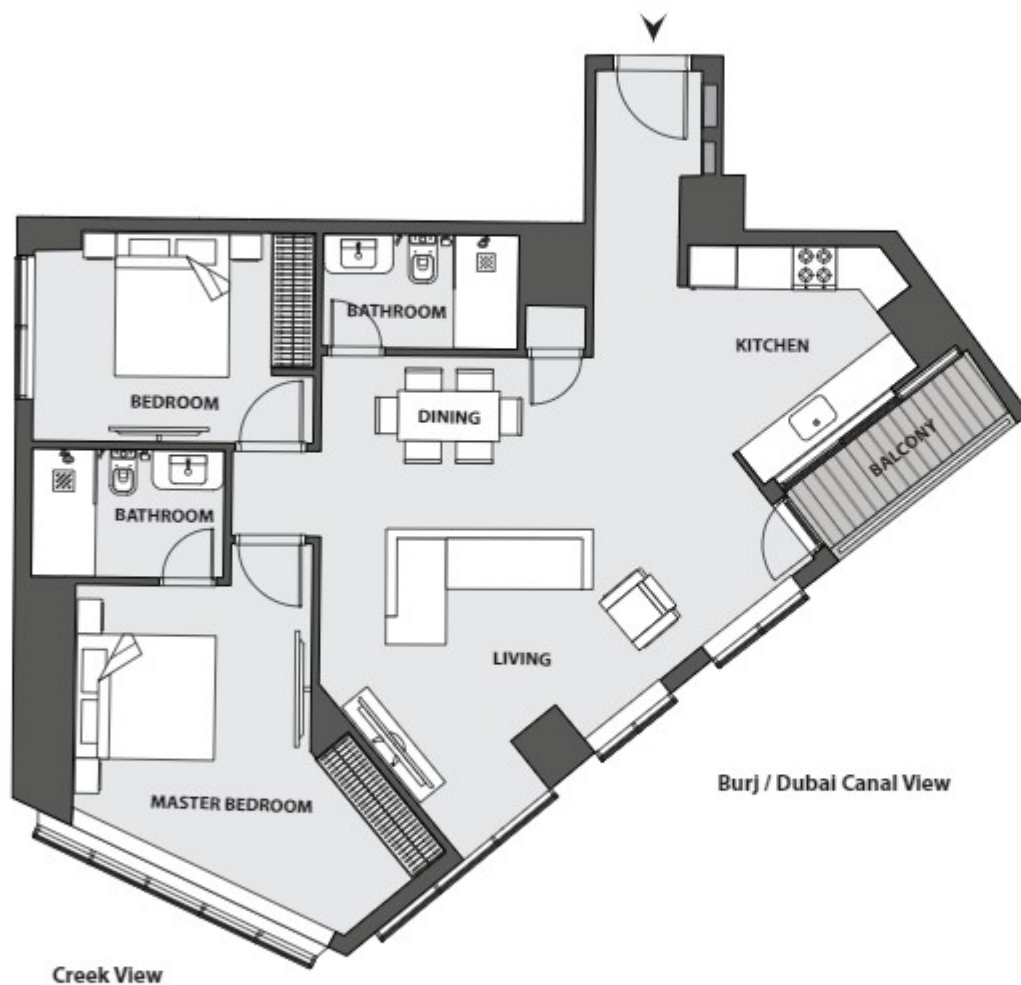
Dubai Canal View



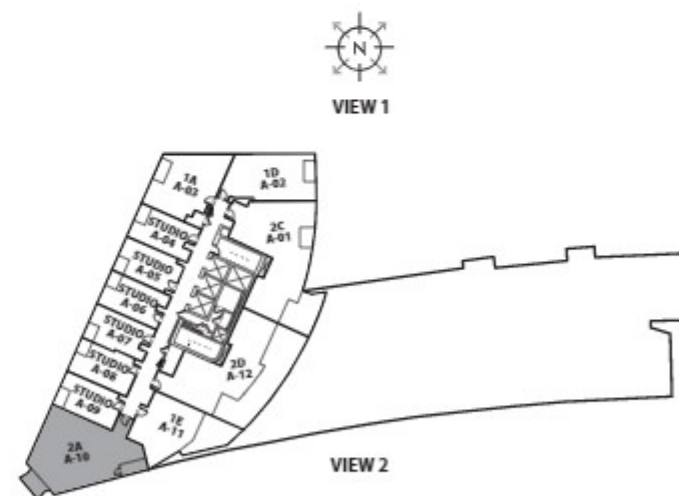
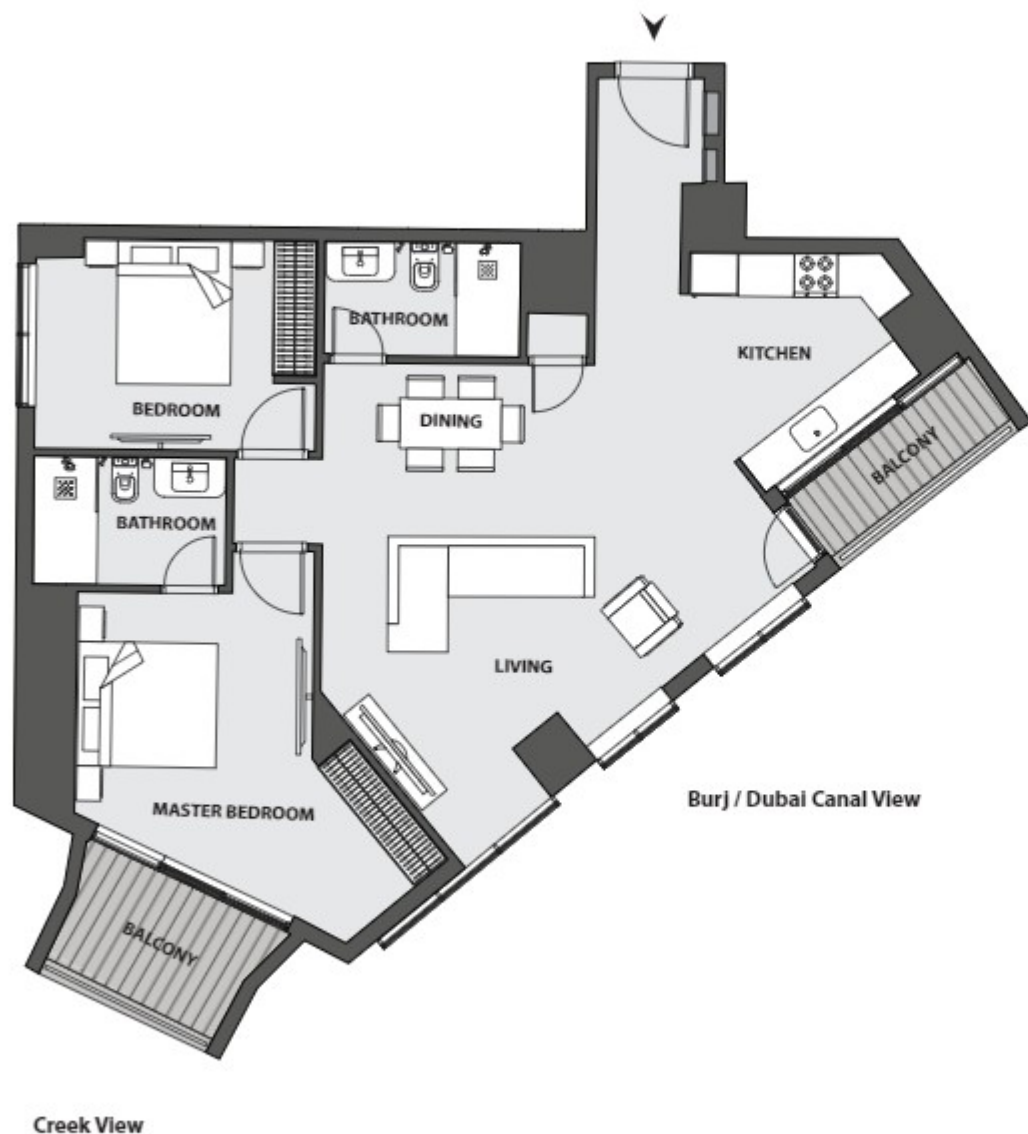
Apartment Area	56.16 m ²	604.50 ft ²
Balcony Area	3.31 m ²	35.63 ft ²
Total Area	59.47 m²	640.13 ft²



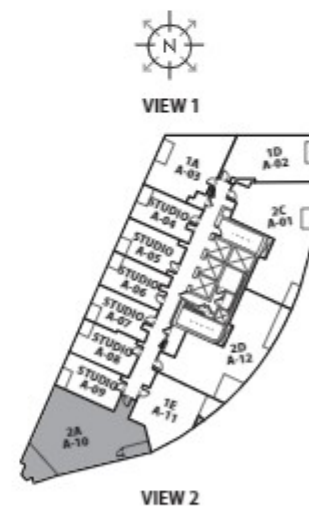
Apartment Area	54.08 m ²	582.11 ft ²
Balcony Area	3.78 m ²	40.68 ft ²
Total Area	57.86 m²	622.79 ft²



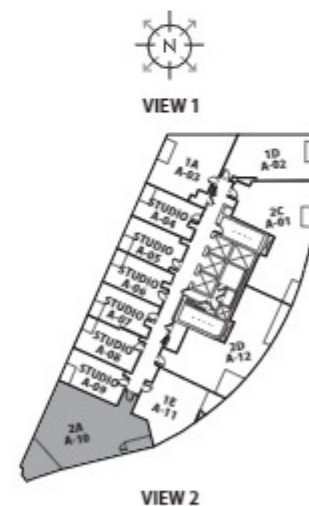
Apartment Area	98.04 m ²	1,055.29 ft ²
Balcony Area	4.68 m ²	50.37 ft ²
Total Area	102.72 m²	1,105.66 ft²



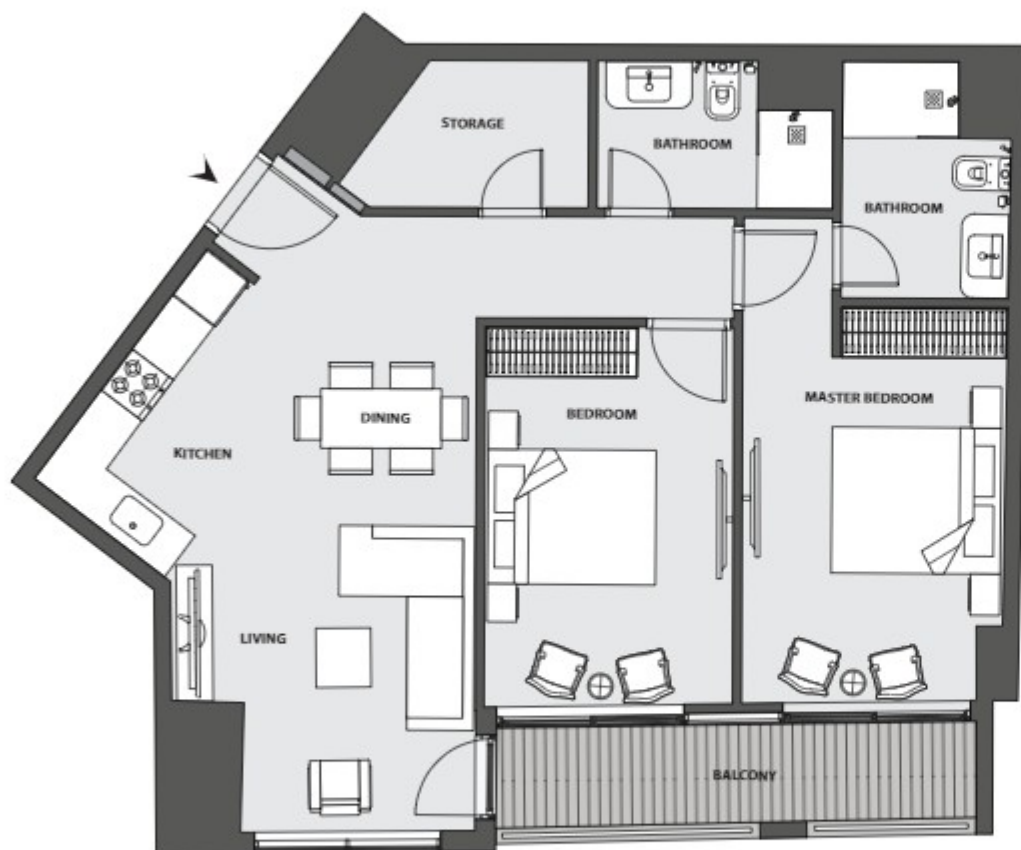
Apartment Area	95.36 m ²	1,026.45 ft ²
Balcony Area	11.00 m ²	118.40 ft ²
Total Area	106.36 m²	1,144.85 ft²



Apartment Area	94.89 m ²	1,021.38 ft ²
Balcony Area	15.26 m ²	164.26 ft ²
Total Area	110.15 m²	1,185.64 ft²



Apartment Area	94.60 m ²	1,018.27 ft ²
Balcony Area	16.60 m ²	178.68 ft ²
Total Area	111.2 m²	1,196.95 ft²



Burj / Dubai Canal View



Apartment Area	82.95 m ²	892.86 ft ²
Balcony Area	8.24 m ²	88.70 ft ²
Total Area	91.19 m²	981.56 ft²



Apartment Area	105.39 m ²	1,134.41 ft ²
Balcony Area	7.76 m ²	83.53 ft ²
Total Area	113.15 m²	1,217.94 ft²



Dubai Canal View



Apartment Area	93.33 m ²	1,004.60 ft ²
Balcony Area	10.40 m ²	111.94 ft ²
Total Area	103.73 m²	1,116.54 ft²

