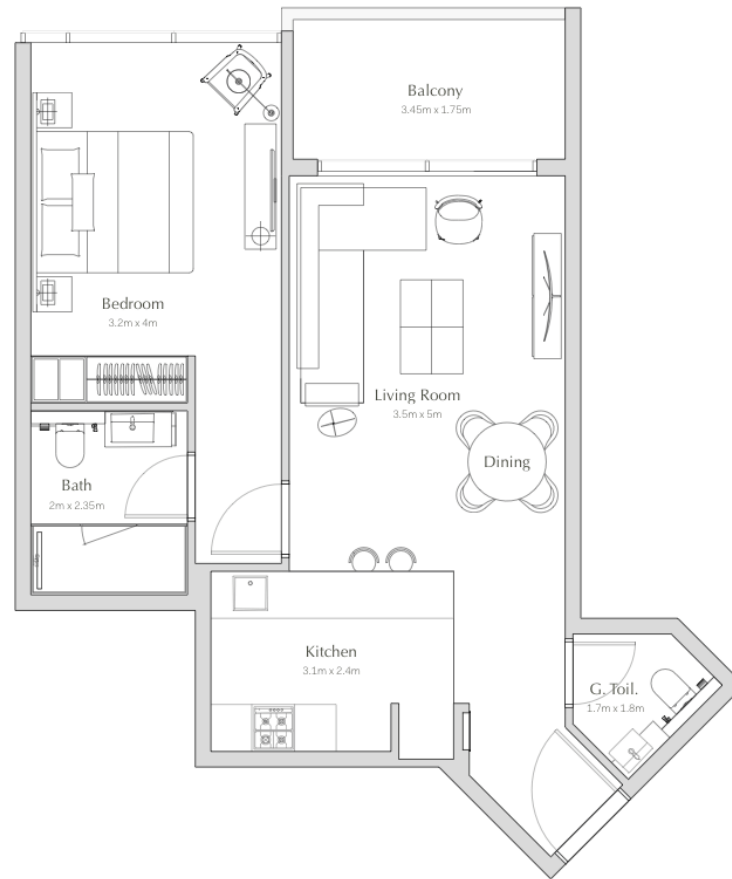


1 BEDROOM APARTMENT

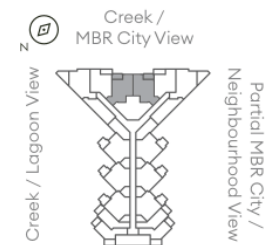
TYPE 1BR-C / 732 SQ.FT.

FLOORS: 2 TO 24
INTERIOR AREA: 652 SQ. FT.
BALCONY AREA: 80 SQ. FT.
NET AREA: 732 SQ. FT.



All pictures, plans, layouts, information, data and details included in this brochure are indicative only and may change at any time in accordance with the final designs of the project, regulatory approvals and planning permissions.

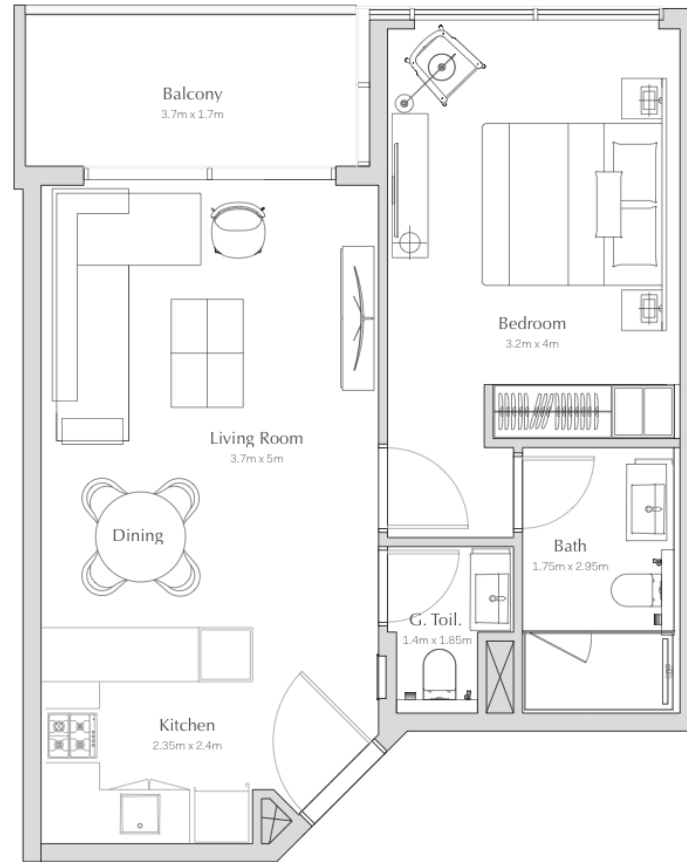
UNIT LOCATION



1 BEDROOM APARTMENT

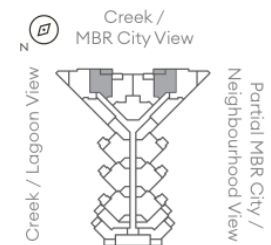
TYPE 1BR-B / 687 SQ.FT.

FLOORS: 2 TO 24
INTERIOR AREA: 612 SQ. FT.
BALCONY AREA: 75 SQ. FT.
NET AREA: 687 SQ. FT.



All pictures, plans, layouts, information, data and details included in this brochure are indicative only and may change at any time in accordance with the final designs of the project, regulatory approvals and planning permissions.

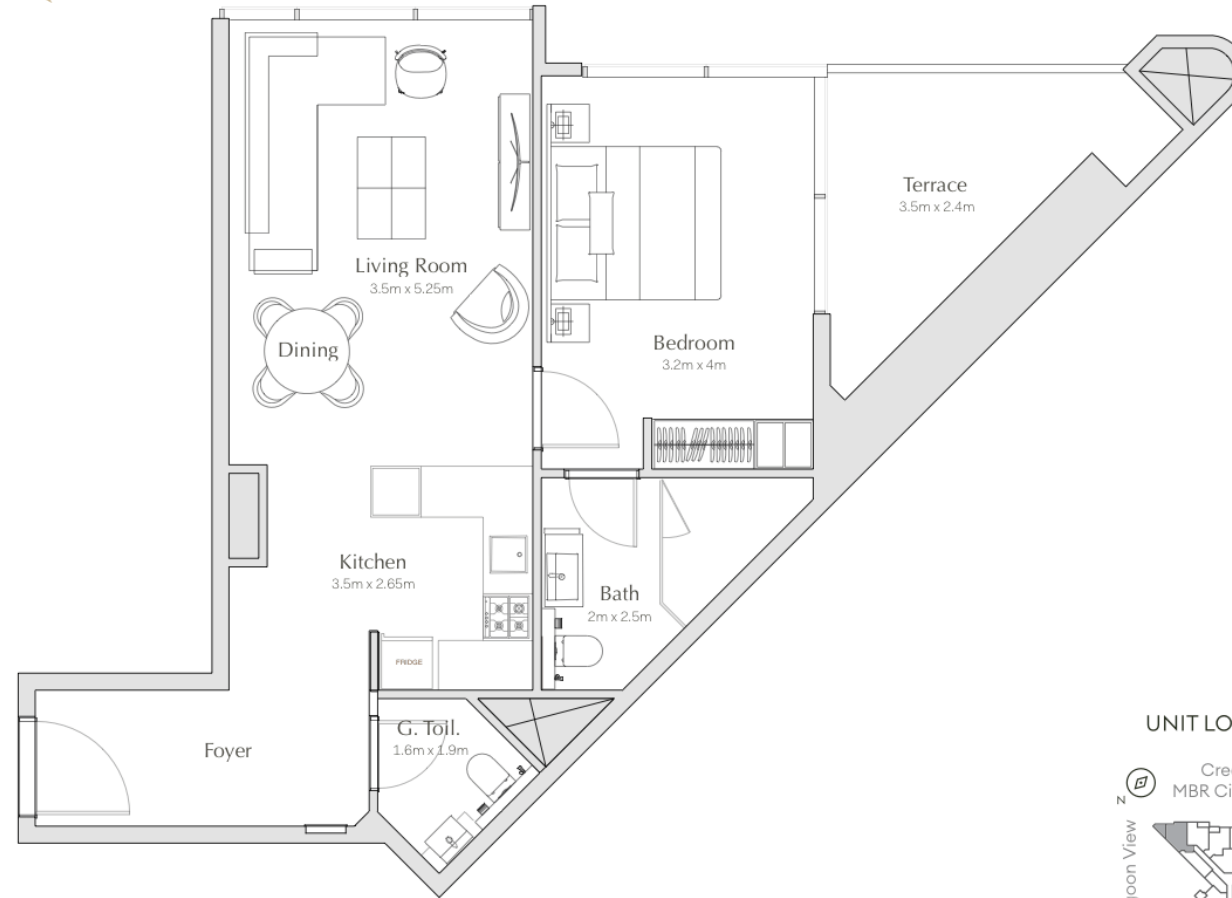
UNIT LOCATION



1 BEDROOM APARTMENT

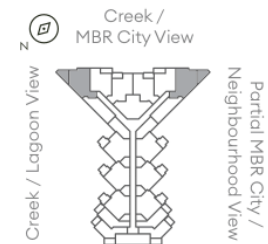
TYPE 1BR-A/ 805 SQ.FT.

FLOORS: 2 TO 24
INTERIOR AREA: 690 SQ. FT.
BALCONY AREA: 115 SQ. FT.
NET AREA: 805 SQ. FT.



All pictures, plans, layouts, information, data and details included in this brochure are indicative only and may change at any time in accordance with the final designs of the project, regulatory approvals and planning permissions.

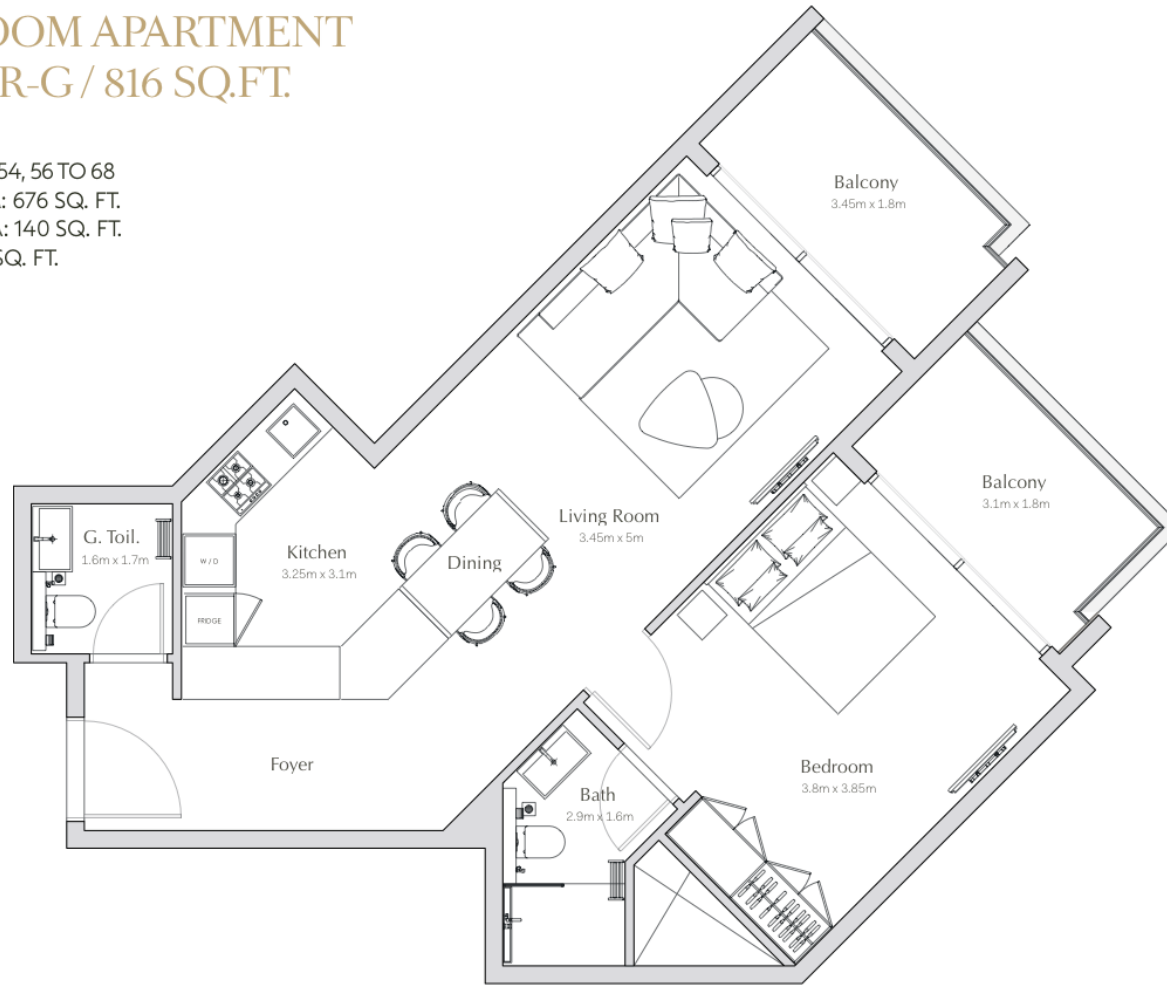
UNIT LOCATION



1 BEDROOM APARTMENT

TYPE 1BR-G / 816 SQ.FT.

FLOORS: 47 TO 54, 56 TO 68
INTERIOR AREA: 676 SQ. FT.
BALCONY AREA: 140 SQ. FT.
NET AREA: 816 SQ. FT.



All pictures, plans, layouts, information, data and details included in this brochure are indicative only and may change at any time in accordance with the final designs of the project, regulatory approvals and planning permissions.

UNIT LOCATION

