



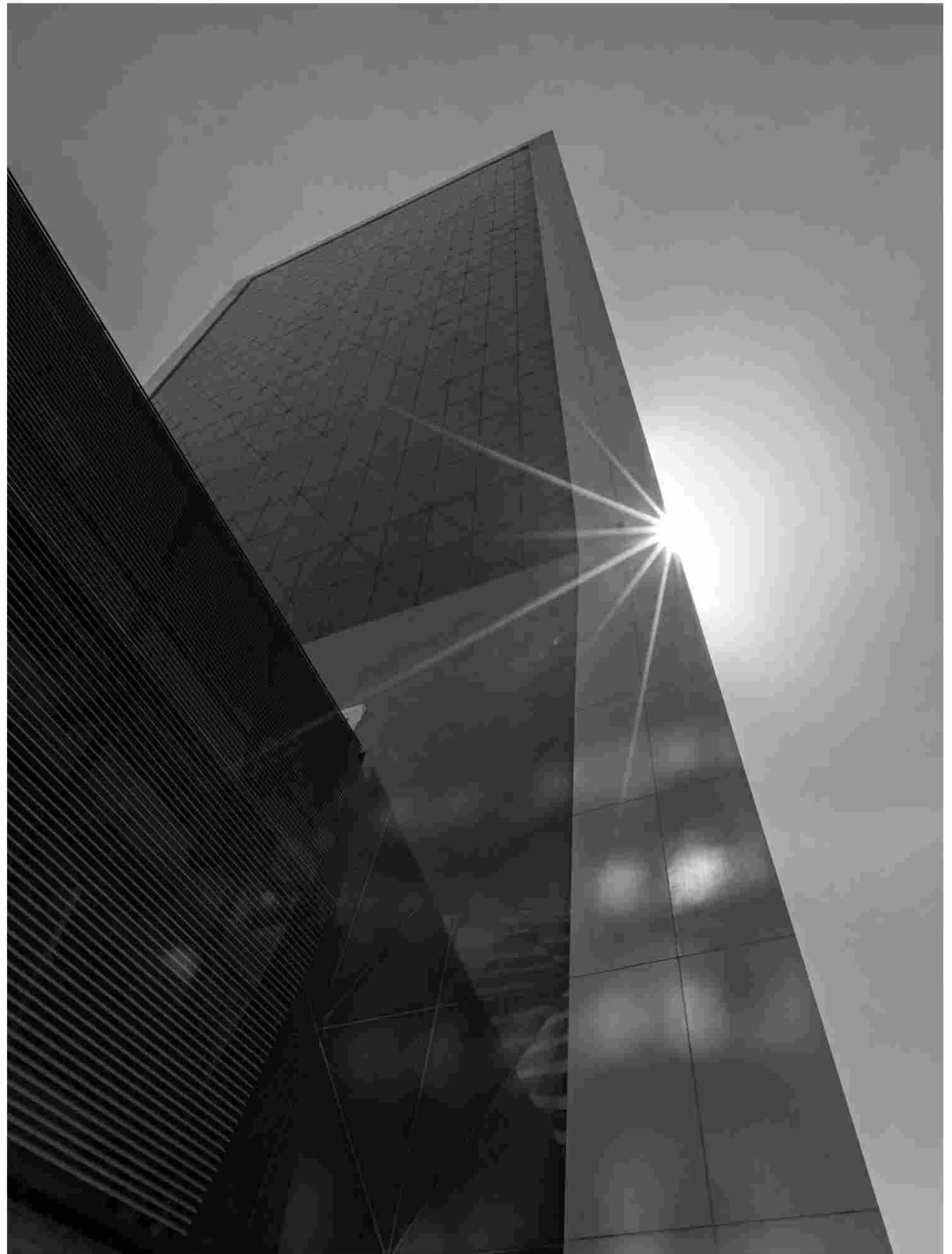
# MARQUISE SQUARE

BURJ KHALIFA DISTRICT



# THIS IS MARQUISE SQUARE

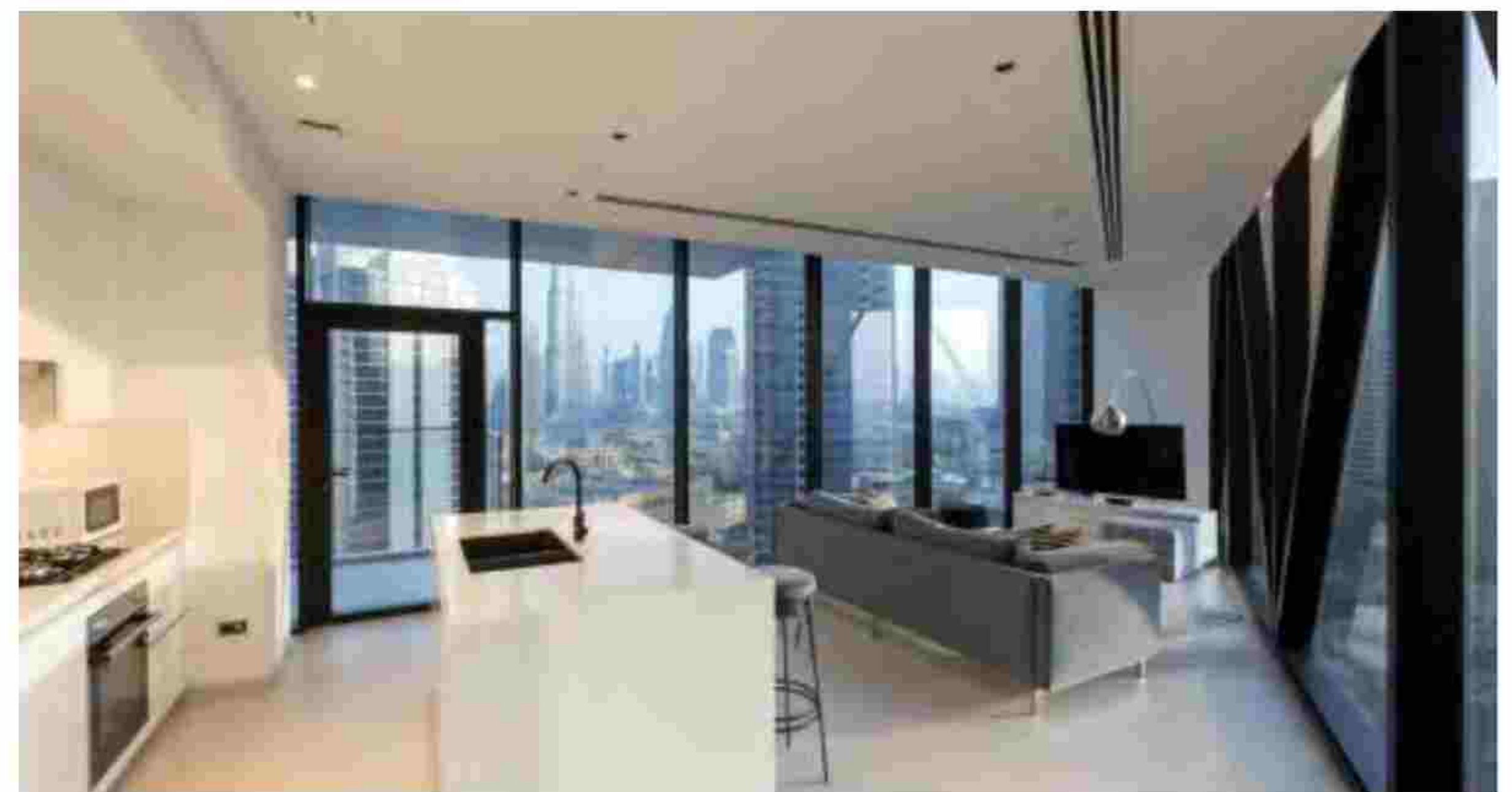
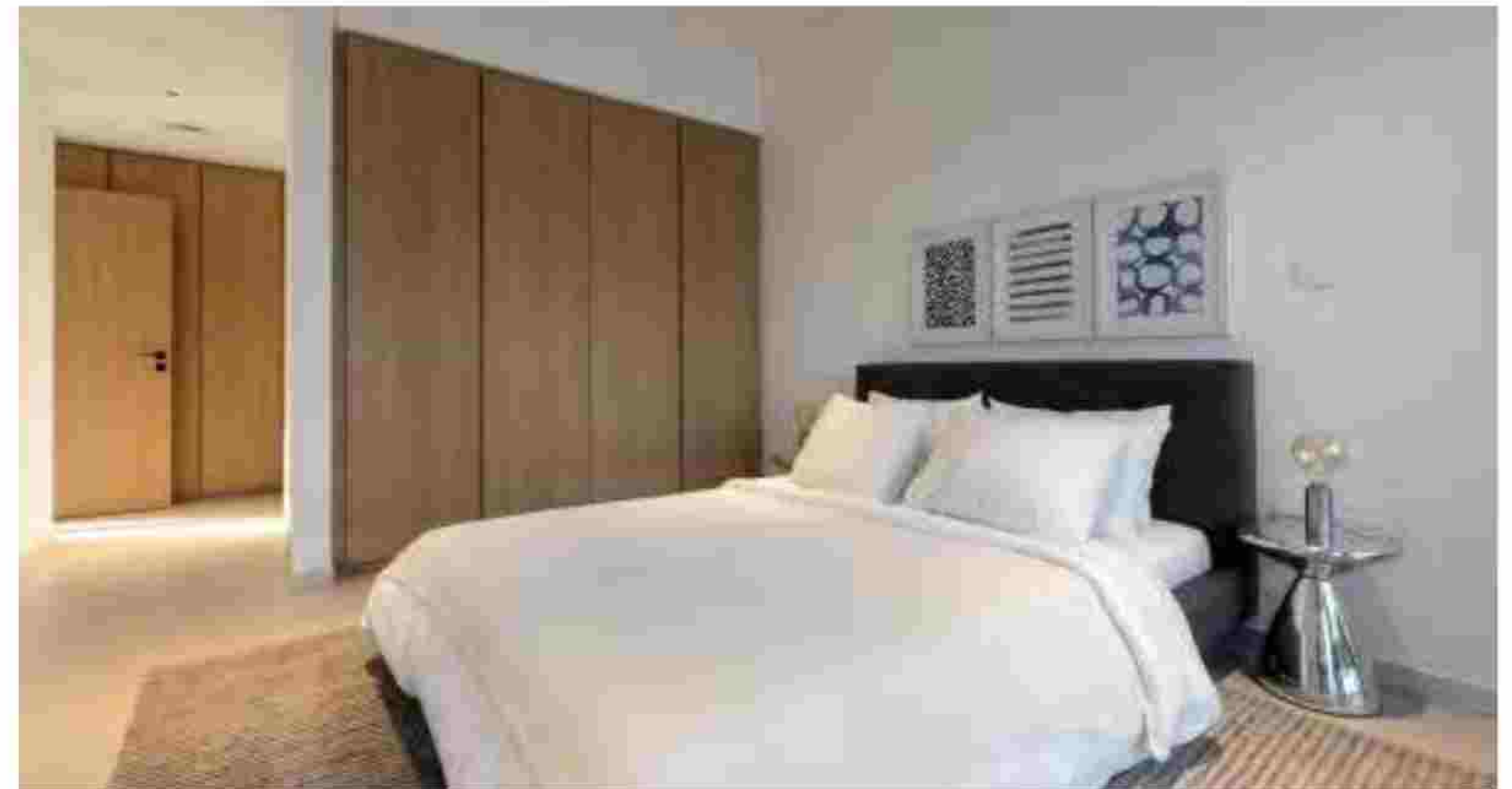
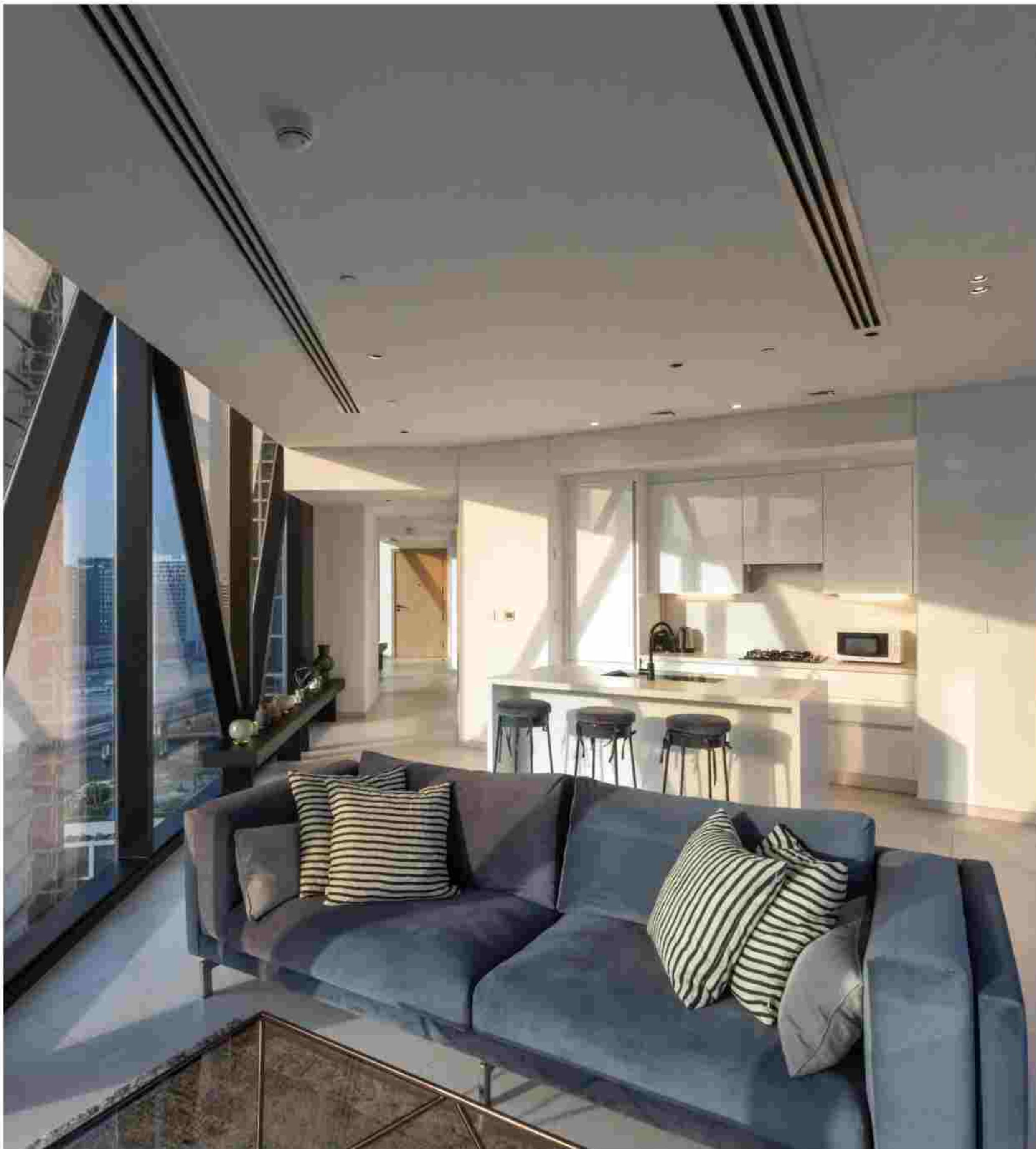
800 883 007  
[sales@seventides.com](mailto:sales@seventides.com)  
Sales Centre Address:  
Dukes The Palm Hotel,  
The Palm Jumeirah, Dubai





# INTERIOR

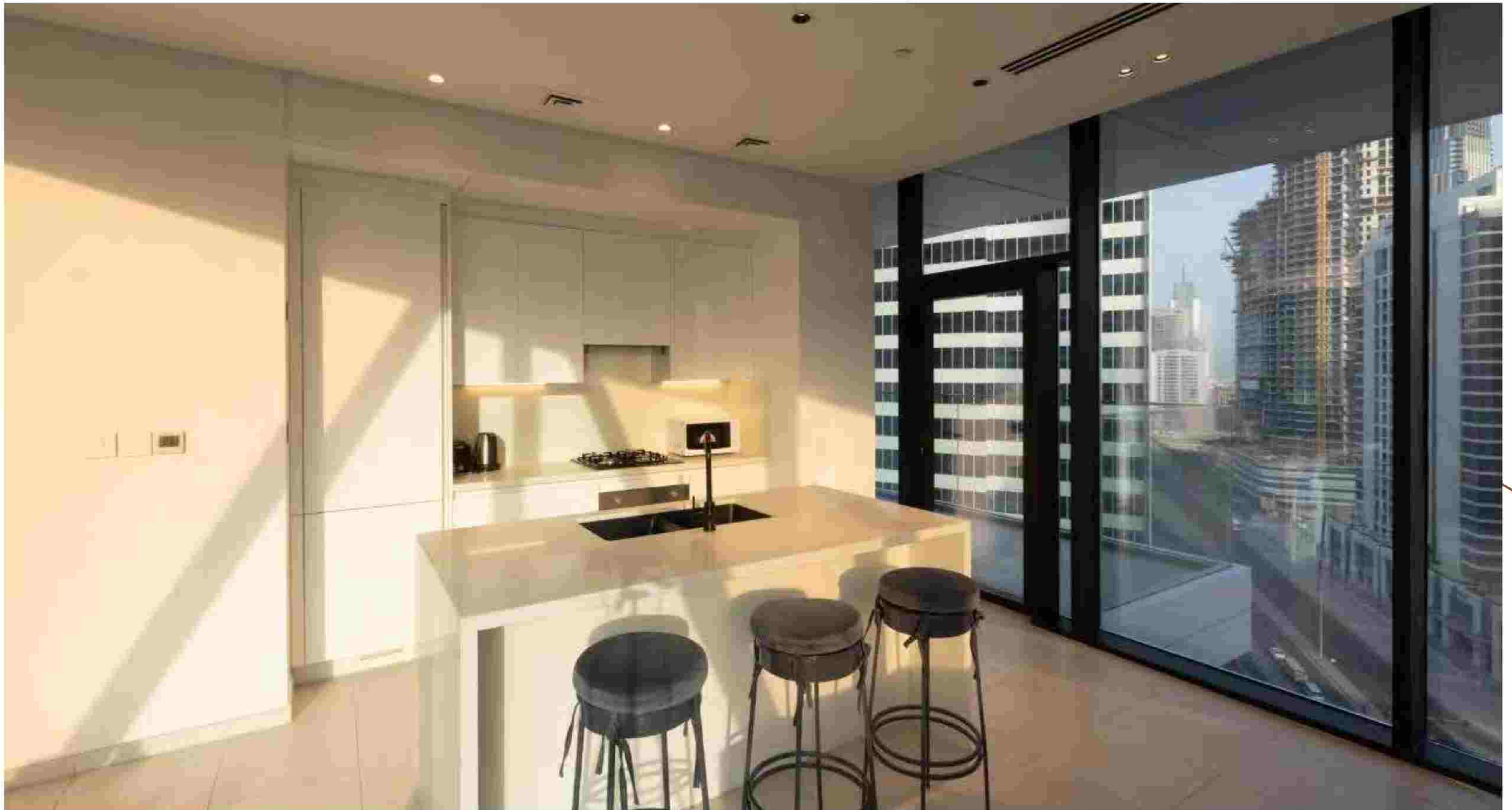
- Bespoke laminated European-made doors
- Bespoke handles with luxurious matte black finishing throughout
- Bespoke fitted wardrobes in all bedrooms
- High quality Italian tiles





# KITCHEN

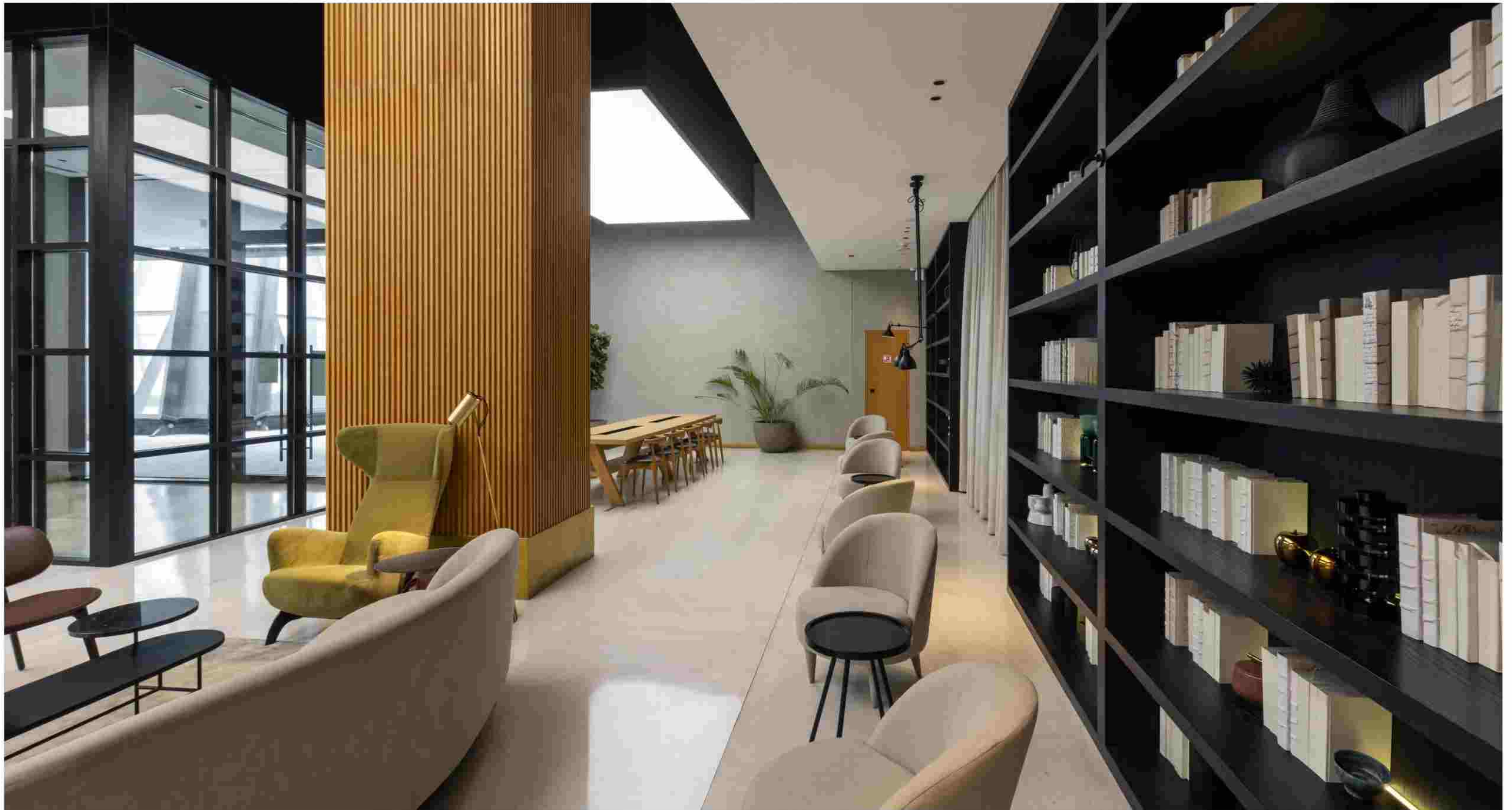
- Bespoke kitchen designs incorporating an eclectic mix of materials
- Composite stone worktops and splashbacks with high-end quartz
- Fully integrated top of the range SIEMENS appliances
- Feature lighting under wall unit
- STOSA Italian-made cabinets and wall units





# LIGHTING & ELECTRICAL

- European-made LED lighting throughout
- LEGRAND light switches and power sockets
- Cat 6 wiring with television, telephone and data points to principal reception rooms and bedrooms





# MARQUISE SQUARE IS IN THE MOST SOUGHT-AFTER SPOT IN DUBAI

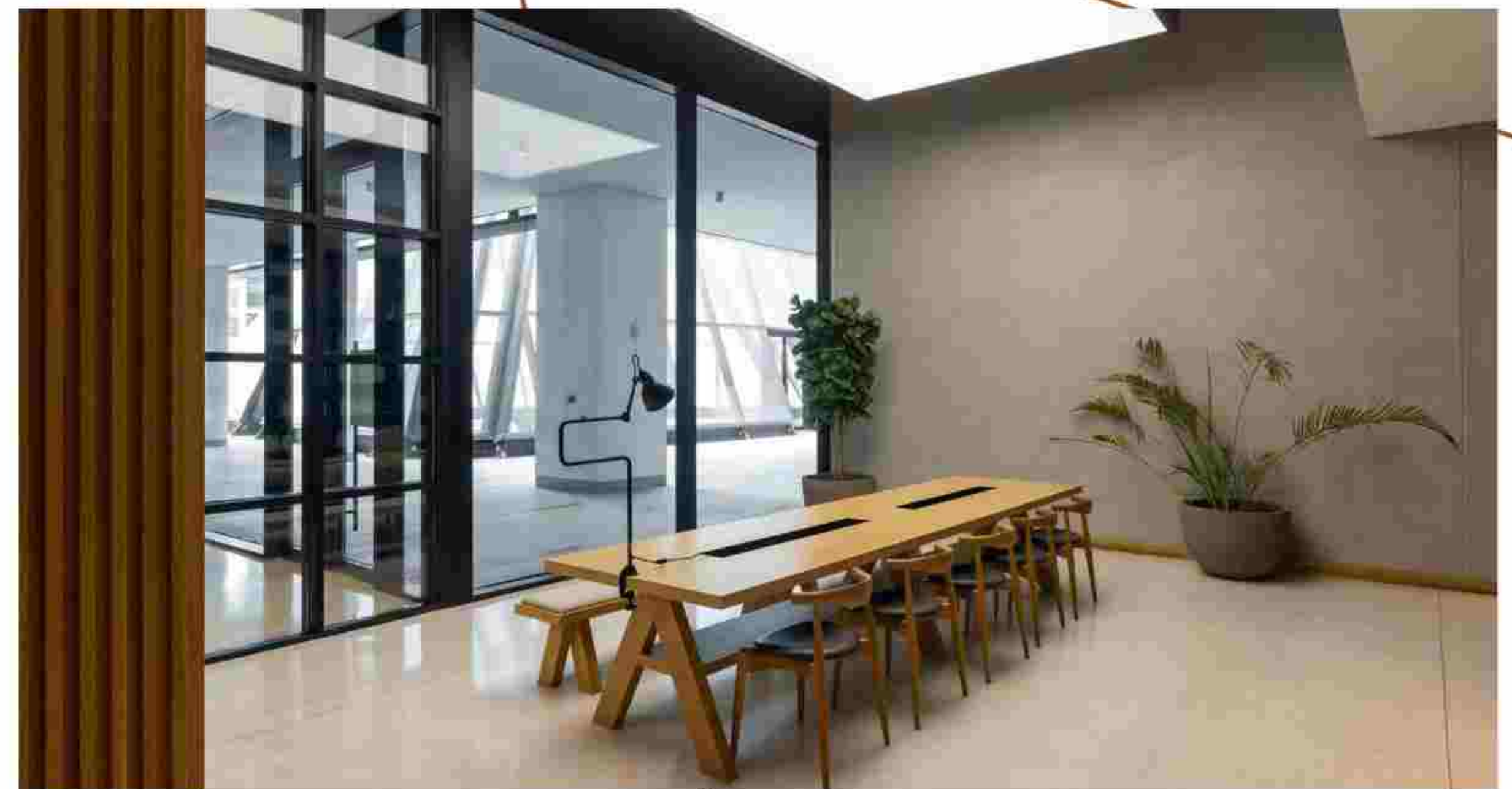
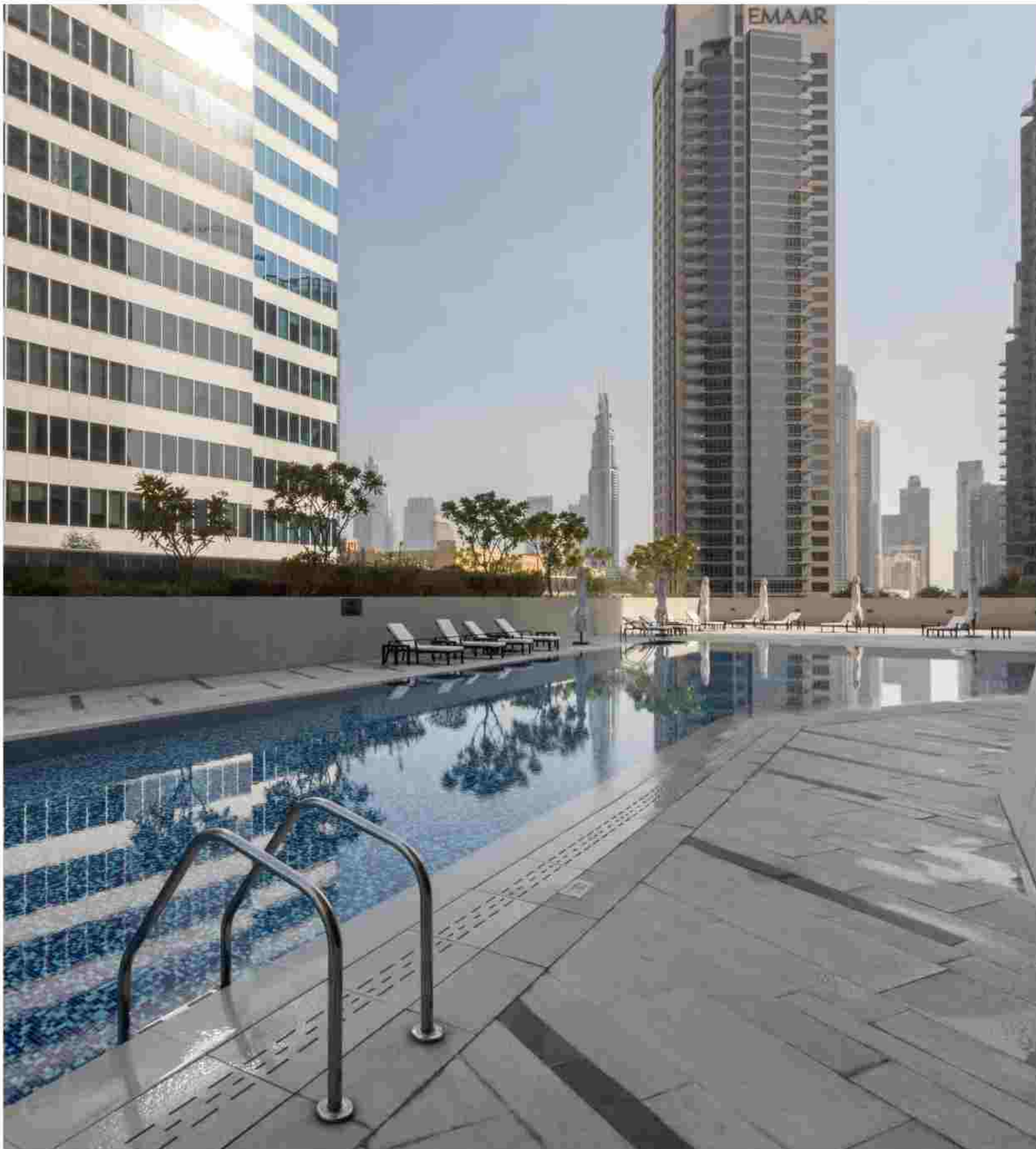
It will be at the heart of the city's future - and this makes it a compelling investment opportunity. Marquise Square is located on Burj Khalifa Street within the world-famous Burj Khalifa District. Its remarkable location is just minutes from the world's tallest building and key business and financial districts, including the Middle East's premier business hub the Dubai International Financial Centre (DIFC).





# COMMON AREAS

- Welcoming reception lobby incorporating bespoke concierge desk
- 24-hour security service
- Visitor seating lounge
- Feature lighting and bespoke design at reception
- 5 passenger lift and 1 service lift





# AMENITIES



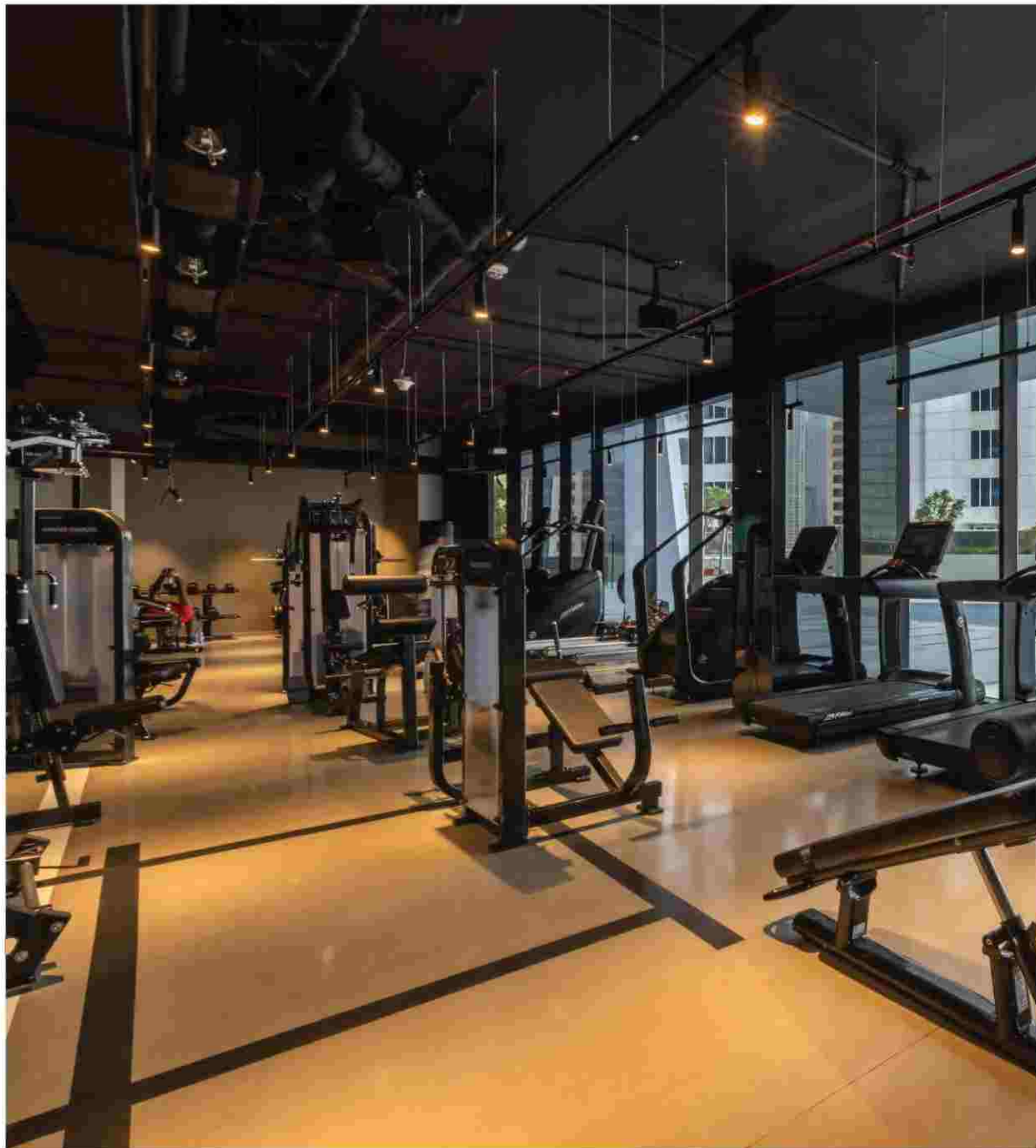
Food & Beverages Outlets



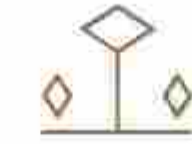
Podium-level swimming pool with children's pool



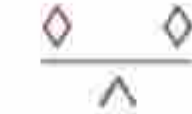
State-of-the-art gymnasium



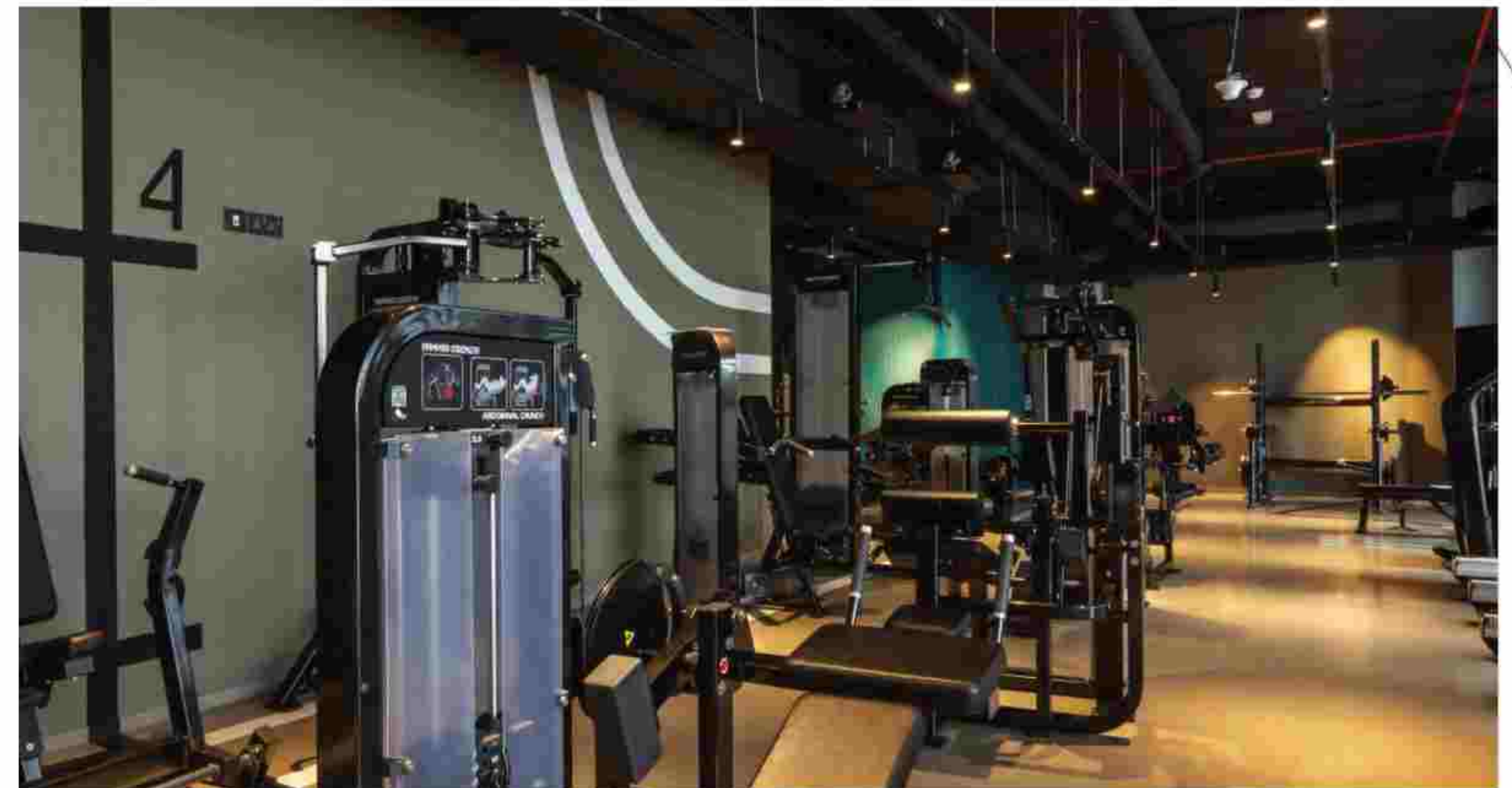
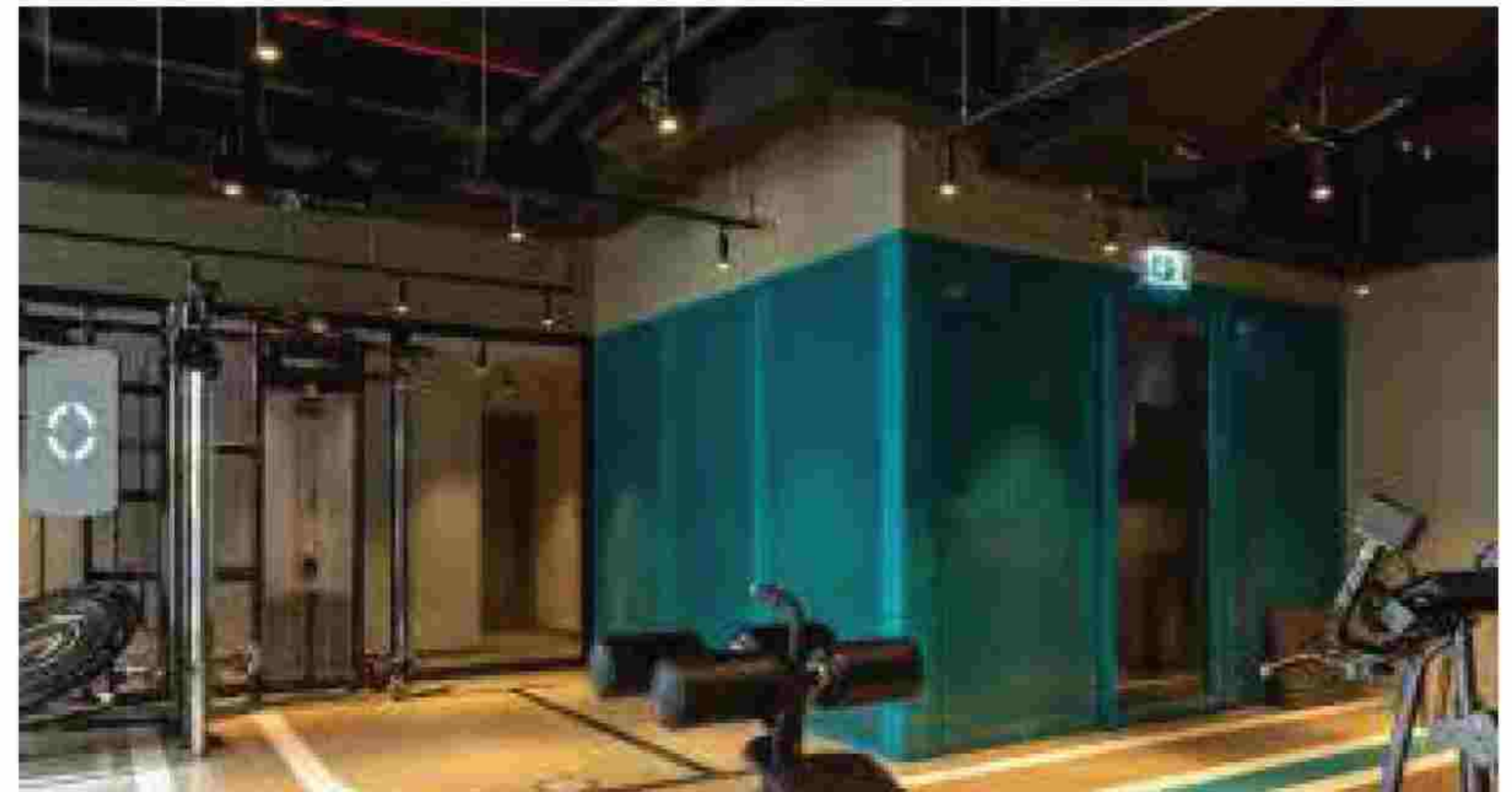
Health club



Multifunctional outdoor court



Children's play area





# MARQUISE SQUARE

THE NEXT EXCLUSIVE  
ADDRESS TO ENTER  
THE BURJ KHALIFA  
DISTRICT



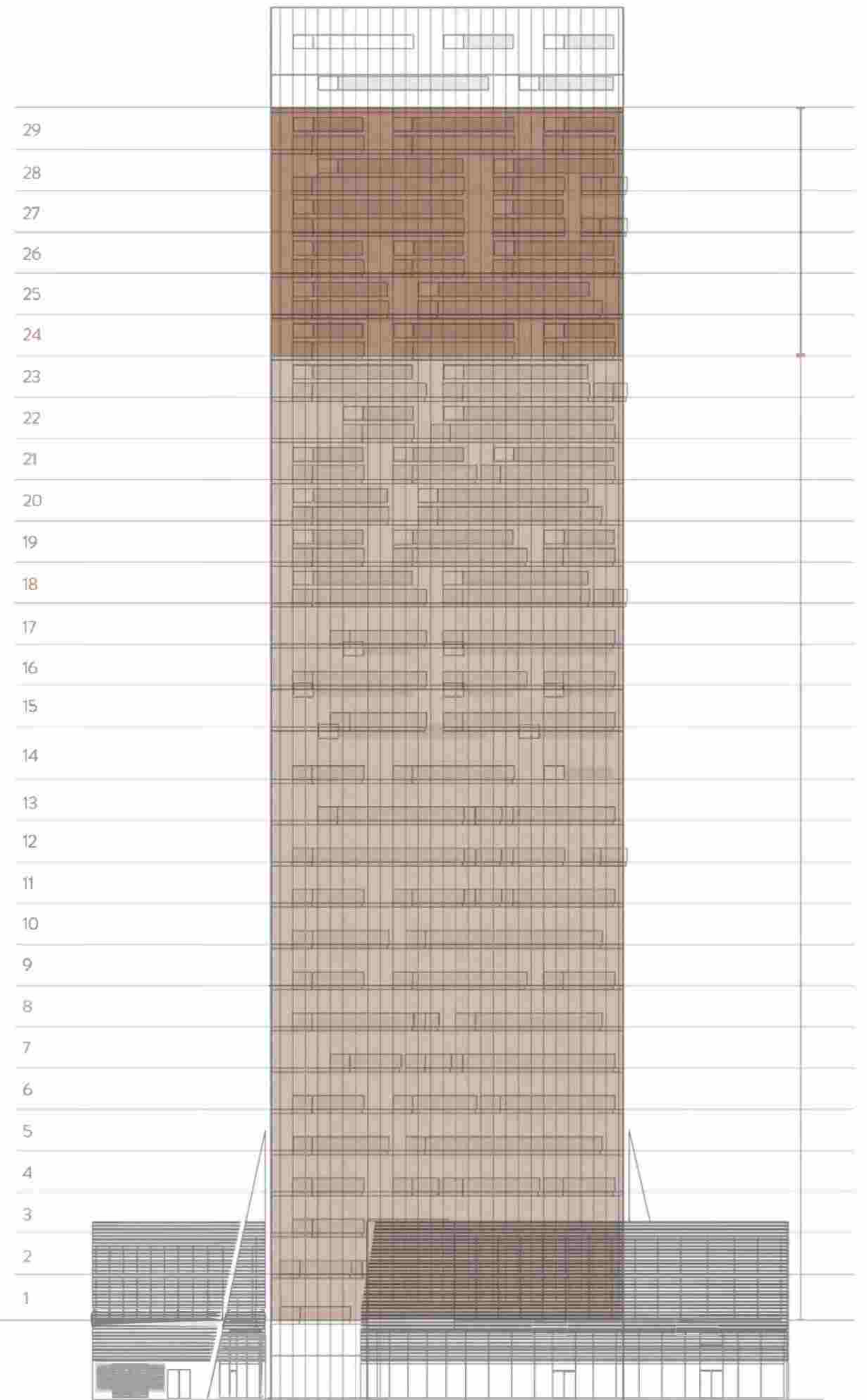
An outstanding location.

Apartments of superior quality.

SRG Holding's project in the Burj Khalifa District, Marquise Square is a striking development constructed by Marquise Square Real Estate Developer LLC, the renowned Emirati developer responsible for Sheikh Zayed Road's Sheraton Grand Hotel - Burj Al Salam.

Spanning 29 floors, Marquise Square boasts an impressive range of immaculately finished studio, one-bedroom, two bedroom and three-bedroom apartments.

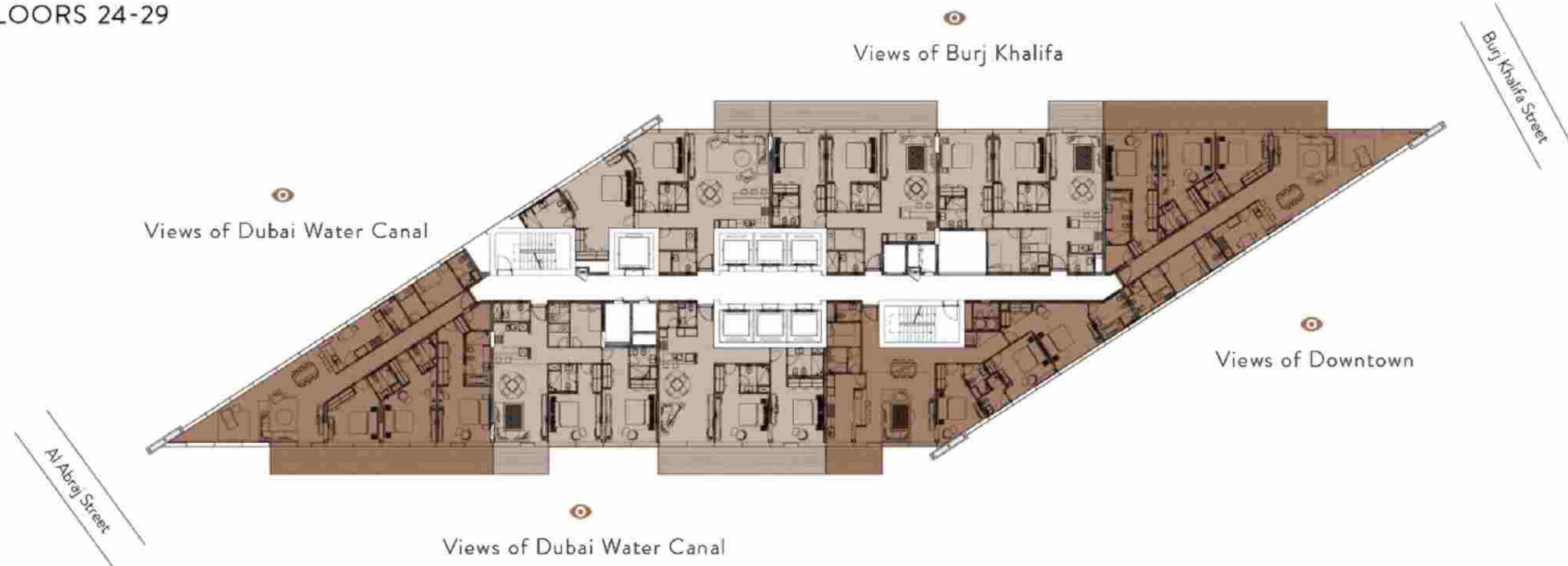
FRONT ELEVATION



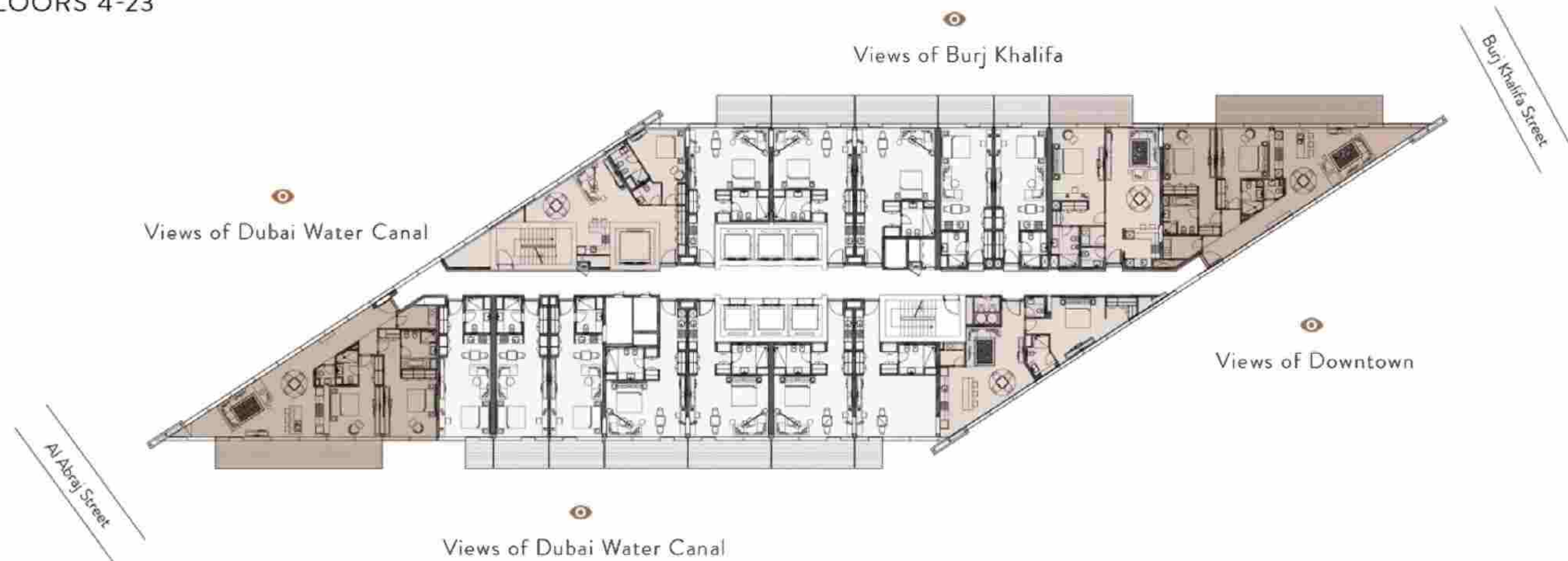




## FLOORS 24-29



## FLOORS 4-23



◇ Studio   ◇ 1-Bedroom Apartment   ◇ 2-Bedroom Apartment   ◇ 3-Bedroom Apartment



## ◆ NORTH ELEVATION

View of the Burj Khalifa and Downtown  
Dubai from Marquise Square





## ◈ SOUTH ELEVATION

View of the Dubai Water Canal  
from Marquise Square

